



# A Cyclase V/VI Polyclonal Antibody

<b>Catalog No</b>	YP-Ab-03674
<b>Isotype</b>	IgG
<b>Reactivity</b>	Human;Mouse;Rat
<b>Applications</b>	WB;IHC;IF;ELISA
<b>Gene Name</b>	ADCY5/ADCY6
<b>Protein Name</b>	Adenylate cyclase type 5/6
<b>Immunogen</b>	The antiserum was produced against synthesized peptide derived from human ADCY5/6. AA range:931-980
<b>Specificity</b>	A Cyclase V/VI Polyclonal Antibody detects endogenous levels of A Cyclase V/VI protein.
<b>Formulation</b>	Liquid in PBS containing 50% glycerol, 0.5% BSA and 0.02% sodium azide.
<b>Source</b>	Polyclonal, Rabbit,IgG
<b>Purification</b>	The antibody was affinity-purified from rabbit antiserum by affinity-chromatography using epitope-specific immunogen.
<b>Dilution</b>	Western Blot: 1/500 - 1/2000. Immunohistochemistry: 1/100 - 1/300. Immunofluorescence: 1/200 - 1/1000. ELISA: 1/10000. Not yet tested in other applications.
<b>Concentration</b>	1 mg/ml
<b>Purity</b>	≥90%
<b>Storage Stability</b>	-20°C/1 year
<b>Synonyms</b>	ADCY5; Adenylate cyclase type 5; ATP pyrophosphate-lyase 5; Adenylate cyclase type V; Adenylyl cyclase 5; ADCY6; KIAA0422; Adenylate cyclase type 6; ATP pyrophosphate-lyase 6; Adenylate cyclase type VI; Adenylyl cyclase 6; Ca(2+)-inhibitabl
<b>Observed Band</b>	138kD
<b>Cell Pathway</b>	Cell membrane ; Multi-pass membrane protein. Cell projection, cilium .
<b>Tissue Specificity</b>	Detected in pancreas islets (at protein level). Detected in pancreas islets.
<b>Function</b>	catalytic activity:ATP = 3',5'-cyclic AMP + diphosphate.,cofactor:Binds 2 magnesium ions per subunit.,enzyme regulation:Inhibition by calcium in the submicromolar concentration range.,function:This is a membrane-bound, calcium-inhibitable adenylyl cyclase.,similarity:Belongs to the adenylyl cyclase class-4/guanylyl cyclase family.,similarity:Contains 2 guanylate cyclase domains.,
<b>Background</b>	This gene encodes a member of the membrane-bound adenylyl cyclase enzymes. Adenylyl cyclases mediate G protein-coupled receptor signaling through the synthesis of the second messenger cAMP. Activity of the encoded protein is stimulated by the Gs alpha subunit of G protein-coupled receptors and is



inhibited by protein kinase A, calcium and Gi alpha subunits. Single nucleotide polymorphisms in this gene may be associated with low birth weight and type 2 diabetes. Alternatively spliced transcript variants that encode different isoforms have been observed for this gene. [provided by RefSeq, Dec 2010],

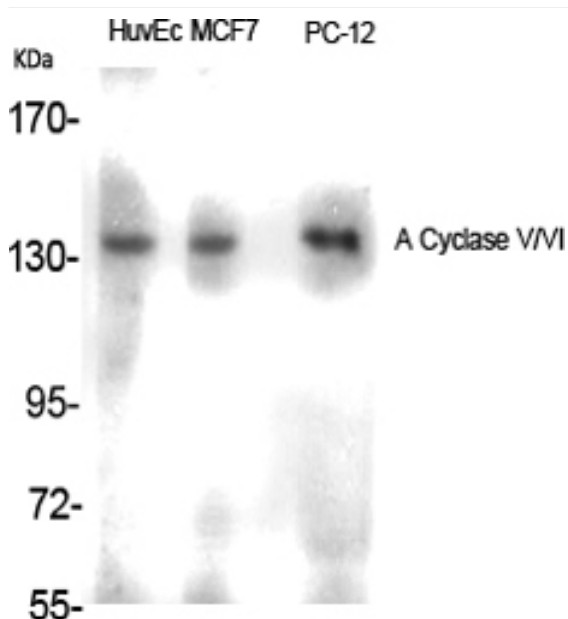
**matters needing attention**

Avoid repeated freezing and thawing!

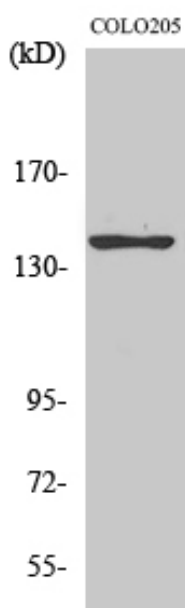
**Usage suggestions**

This product can be used in immunological reaction related experiments. For more information, please consult technical personnel.

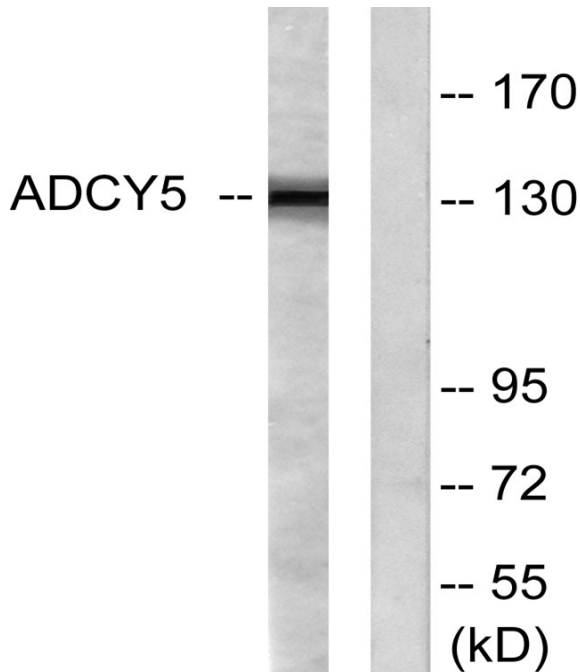
**Products Images**



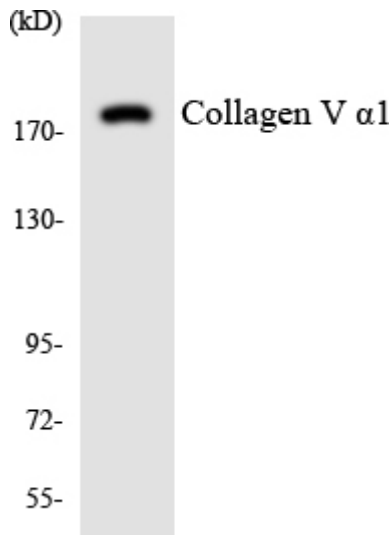
Western Blot analysis of various cells using A Cyclase V/VI Polyclonal Antibody



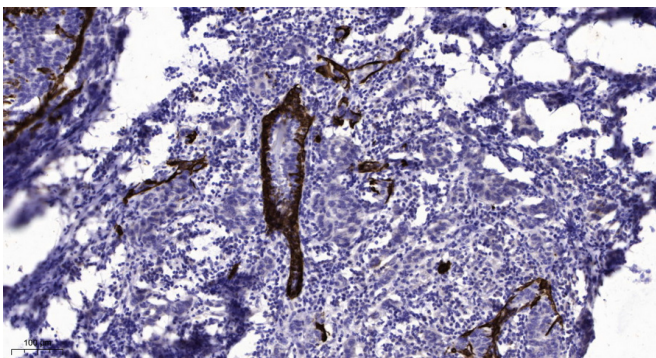
Western Blot analysis of COLO205 cells using A Cyclase V/VI Polyclonal Antibody



Western blot analysis of lysates from COLO205 cells, using ADCY5/6 Antibody. The lane on the right is blocked with the synthesized peptide.



Western blot analysis of the lysates from HUVEC cells using Collagen V α1 antibody.



Immunohistochemical analysis of paraffin-embedded human Breast cancer. 1, Antibody was diluted at 1:200(4° overnight). 2, Tris-EDTA, pH9.0 was used for antigen retrieval. 3, Secondary antibody was diluted at 1:200(room temperature, 45min).