



A Cyclase I Polyclonal Antibody

Catalog No	YP-Ab-03671
Isotype	IgG
Reactivity	Human;Mouse
Applications	WB;IHC;IF;ELISA
Gene Name	ADCY1
Protein Name	Adenylate cyclase type 1
Immunogen	The antiserum was produced against synthesized peptide derived from human ADCY1. AA range:231-280
Specificity	A Cyclase I Polyclonal Antibody detects endogenous levels of A Cyclase I protein.
Formulation	Liquid in PBS containing 50% glycerol, 0.5% BSA and 0.02% sodium azide.
Source	Polyclonal, Rabbit,IgG
Purification	The antibody was affinity-purified from rabbit antiserum by affinity-chromatography using epitope-specific immunogen.
Dilution	WB: 1/500 - 1/2000. IHC: 1/100 - 1/300. ELISA: 1/40000.. IF 1:50-200
Concentration	1 mg/ml
Purity	≥90%
Storage Stability	-20°C/1 year
Synonyms	ADCY1; Adenylate cyclase type 1; ATP pyrophosphate-lyase 1; Adenylate cyclase type I; Adenylyl cyclase 1; Ca(2+)/calmodulin-activated adenylyl cyclase
Observed Band	130kD
Cell Pathway	Membrane ; Multi-pass membrane protein . Cell membrane ; Multi-pass membrane protein . Cytoplasm . Membrane raft . Expressed in the cytoplasm of supporting cells and hair cells of the cochlea vestibule, as well as to the cochlear hair cell nuclei and stereocilia. .
Tissue Specificity	Detected in zona glomerulosa and zona fasciculata in the adrenal gland (at protein level) (PubMed:11549699). Brain, retina and adrenal medulla.
Function	catalytic activity:ATP = 3',5'-cyclic AMP + diphosphate.,cofactor:Binds 2 magnesium ions per subunit.,enzyme regulation:Activated by calcium/calmodulin. Inhibited by the G protein beta and gamma subunit complex.,function:This is a calmodulin-sensitive adenylyl cyclase. May be involved in regulatory processes in the central nervous system. It may play a role in memory acquisition and learning.,similarity:Belongs to the adenylyl cyclase class-4/guanylyl cyclase family.,similarity:Contains 2 guanylate cyclase domains.,tissue specificity:Brain, retina and adrenal medulla.,
Background	This gene encodes a member of the of adenylate cyclase gene family that is primarily expressed in the brain. This protein is regulated by calcium/calmodulin concentration and may be involved in brain development. Alternate splicing



results in multiple transcript variants. [provided by RefSeq, Aug 2013],

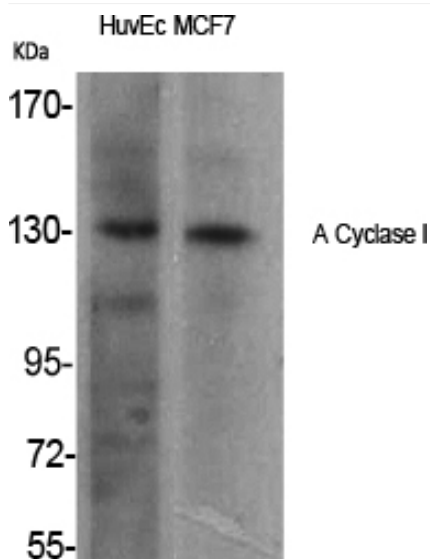
matters needing attention

Avoid repeated freezing and thawing!

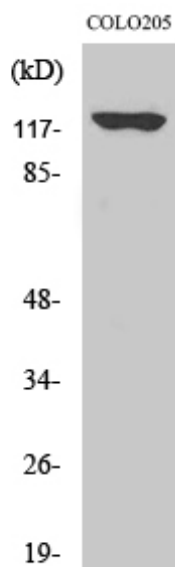
Usage suggestions

This product can be used in immunological reaction related experiments. For more information, please consult technical personnel.

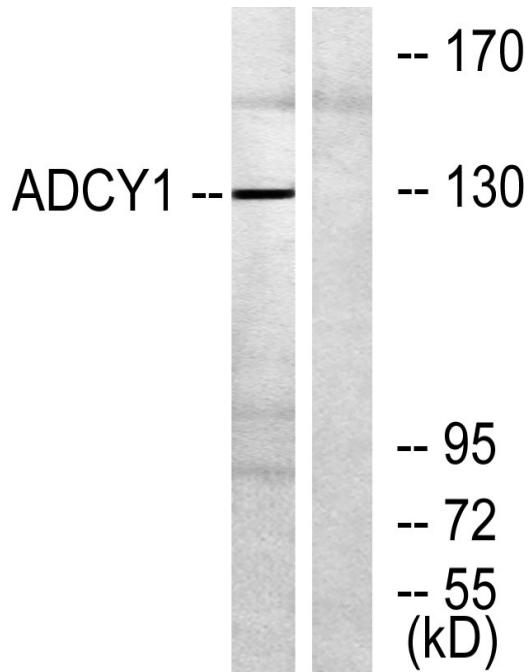
Products Images



Western Blot analysis of various cells using A Cyclase I Polyclonal Antibody



Western Blot analysis of COLO205 cells using A Cyclase I Polyclonal Antibody



Western blot analysis of lysates from COLO205 cells, using ADCY1 Antibody. The lane on the right is blocked with the synthesized peptide.