

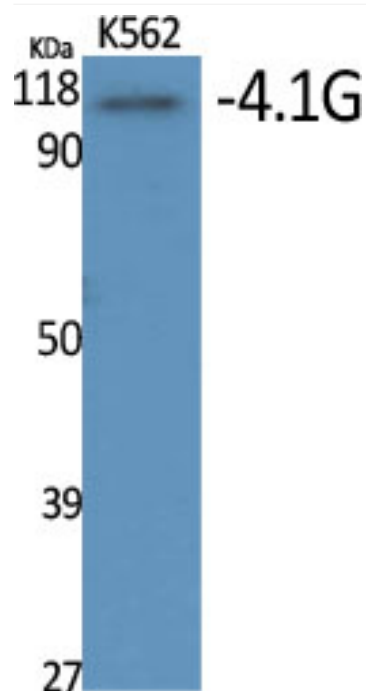


4.1G Polyclonal Antibody

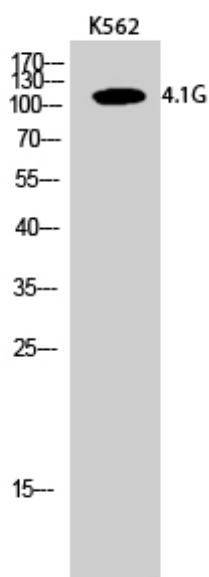
Catalog No	YP-Ab-03665
Isotype	IgG
Reactivity	Human;Rat;Mouse;
Applications	WB;IHC;IF;ELISA
Gene Name	EPB41L2
Protein Name	Band 4.1-like protein 2
Immunogen	Synthesized peptide derived from 4.1G . at AA range: 530-610
Specificity	4.1G Polyclonal Antibody detects endogenous levels of 4.1G protein.
Formulation	Liquid in PBS containing 50% glycerol, 0.5% BSA and 0.02% sodium azide.
Source	Polyclonal, Rabbit,IgG
Purification	The antibody was affinity-purified from rabbit antiserum by affinity-chromatography using epitope-specific immunogen.
Dilution	WB: 1/500 - 1/2000. IHC: 1/100 - 1/300. ELISA: 1/40000.. IF 1:50-200
Concentration	1 mg/ml
Purity	≥90%
Storage Stability	-20°C/1 year
Synonyms	EPB41L2; Band 4.1-like protein 2; Generally expressed protein 4.1; 4.1G
Observed Band	112kD
Cell Pathway	Cytoplasm, cytoskeleton . Cytoplasm, cell cortex . Cell membrane .
Tissue Specificity	Widely expressed.
Function	PTM:Phosphorylated upon DNA damage, probably by ATM or ATR.,similarity:Contains 1 FERM domain.,subunit:The CTD domain interacts with FKBP2 (By similarity). Interacts with FCGR1A.,tissue specificity:Widely expressed.,
Background	PTM:Phosphorylated upon DNA damage, probably by ATM or ATR.,similarity:Contains 1 FERM domain.,subunit:The CTD domain interacts with FKBP2 (By similarity). Interacts with FCGR1A.,tissue specificity:Widely expressed.,
matters needing attention	Avoid repeated freezing and thawing!
Usage suggestions	This product can be used in immunological reaction related experiments. For more information, please consult technical personnel.



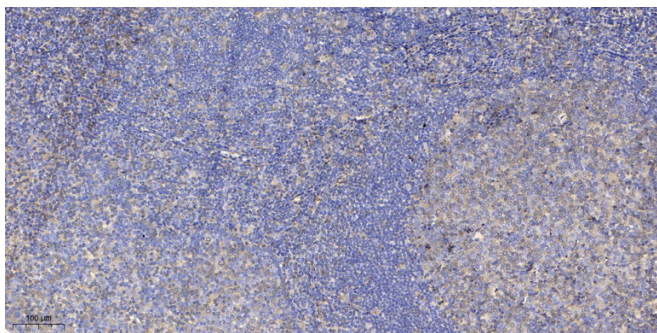
Products Images



Western Blot analysis of various cells using 4.1G Polyclonal Antibody



Western Blot analysis of K562 cells using 4.1G Polyclonal Antibody



Immunohistochemical analysis of paraffin-embedded human tonsil. 1, Antibody was diluted at 1:200(4° overnight). 2, Tris-EDTA,pH9.0 was used for antigen retrieval. 3,Secondary antibody was diluted at 1:200(room temperature, 30min).