



TRIM72 Polyclonal Antibody

Catalog No	YP-Ab-03500
Isotype	IgG
Reactivity	Human;Mouse;Rat
Applications	WB;IHC;IF
Gene Name	TRIM72
Protein Name	Tripartite motif-containing protein 72
Immunogen	Recombinant Protein of TRIM72
Specificity	The antibody detects endogenous TRIM72 protein.
Formulation	PBS, pH 7.4, containing 0.5%BSA, 0.02% sodium azide as Preservative and 50% Glycerol.
Source	Polyclonal, Rabbit,IgG
Purification	The antibody was affinity-purified from rabbit antiserum by affinity-chromatography using epitope-specific immunogen.
Dilution	WB: 1:1000 IHC: 1:200-500. IF 1:50-200
Concentration	1 mg/ml
Purity	≥90%
Storage Stability	-20°C/1 year
Synonyms	Tripartite motif-containing protein 72; Mitsugumin-53; Mg53
Observed Band	53kD
Cell Pathway	Cell membrane, sarcolemma . Cytoplasmic vesicle membrane . Tethered to plasma membrane and cytoplasmic vesicles via its interaction with phosphatidylserine. .
Tissue Specificity	Cerebellum,Muscle,Thymus,
Function	similarity:Belongs to the TRIM/RBCC family.,similarity:Contains 1 B box-type zinc finger.,similarity:Contains 1 B30.2/SPRY domain.,similarity:Contains 1 RING-type zinc finger.,
Background	similarity:Belongs to the TRIM/RBCC family.,similarity:Contains 1 B box-type zinc finger.,similarity:Contains 1 B30.2/SPRY domain.,similarity:Contains 1 RING-type zinc finger.,
matters needing attention	Avoid repeated freezing and thawing!
Usage suggestions	This product can be used in immunological reaction related experiments. For more information, please consult technical personnel.



Products Images

94KD

66KD

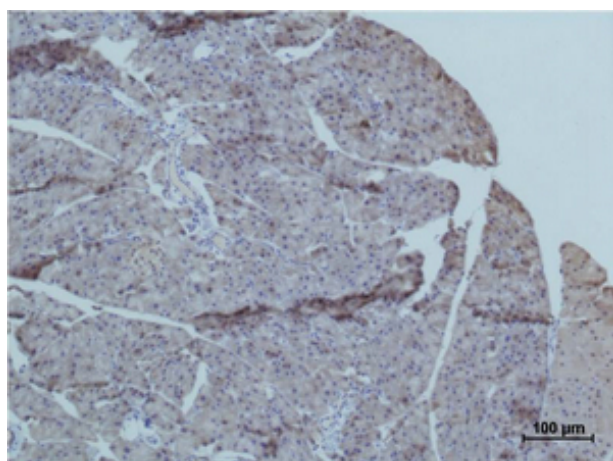
45KD

35KD

26KD



Western blot analysis of Mouse skeletal muscle using TRIM72 Polyclonal Antibody. Secondary antibody(catalog#:RS0002) was diluted at 1:20000



Immunohistochemical analysis of paraffin-embedded Mouse Pancreas Tissue using TRIM72 Polyclonal Antibody.