



TReP-132 Polyclonal Antibody

Catalog No	YP-Ab-03338
Isotype	IgG
Reactivity	Human;Mouse
Applications	IHC;IF;ELISA
Gene Name	TRERF1
Protein Name	Transcriptional-regulating factor 1
Immunogen	The antiserum was produced against synthesized peptide derived from human TREF1. AA range:1071-1120
Specificity	TReP-132 Polyclonal Antibody detects endogenous levels of TReP-132 protein.
Formulation	Liquid in PBS containing 50% glycerol, 0.5% BSA and 0.02% sodium azide.
Source	Polyclonal, Rabbit,IgG
Purification	The antibody was affinity-purified from rabbit antiserum by affinity-chromatography using epitope-specific immunogen.
Dilution	IHC: 1/100 - 1/300. ELISA: 1/5000.. IF 1:50-200
Concentration	1 mg/ml
Purity	≥90%
Storage Stability	-20°C/1 year
Synonyms	TRERF1; BCAR2; RAPA; TREP132; Transcriptional-regulating factor 1; Breast cancer anti-estrogen resistance 2; Transcriptional-regulating protein 132; Zinc finger protein rapa; Zinc finger transcription factor TReP-132
Observed Band	
Cell Pathway	Nucleus .
Tissue Specificity	Highest expression was seen in thymus, testis and adrenal cortex, expressed also in the adrenal medulla, thyroid, and stomach. Highly expressed in steroidogenic JEG-3 and MCF-7 cells, low expression was seen in non-steroidogenic Hep-G2 and HEK293 cells.
Function	function:Activates transcription of CYP11A1. Interaction with CREBBP and EP300 results in a synergistic transcriptional activation of CYP11A1.,similarity:Contains 1 ELM2 domain.,similarity:Contains 1 SANT domain.,similarity:Contains 3 C2H2-type zinc fingers.,subunit:Interacts with CREBBP and EP300.,tissue specificity:Highest expression was seen in thymus, testis and adrenal cortex, expressed also in the adrenal medulla, thyroid, and stomach. Highly expressed in steroidogenic JEG-3 and MCF-7 cells, low expression was seen in non-steroidogenic HepG2 and HK293 cells.,
Background	This gene encodes a zinc-finger transcriptional regulating protein which interacts with CBP/p300 to regulate the human gene CYP11A1. Alternative splicing results

in multiple transcript variants encoding different isoforms. [provided by RefSeq, Jul 2014],

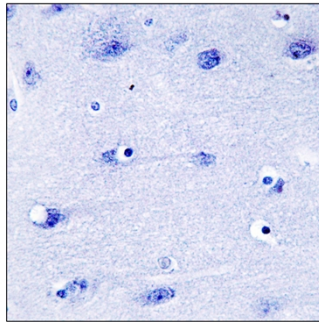
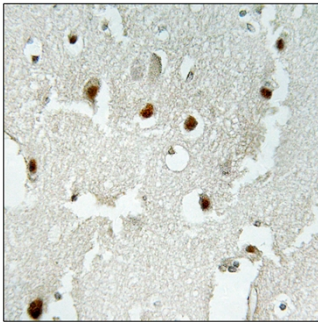
matters needing attention

Avoid repeated freezing and thawing!

Usage suggestions

This product can be used in immunological reaction related experiments. For more information, please consult technical personnel.

Products Images



Immunohistochemistry analysis of paraffin-embedded human brain tissue, using TREF1 Antibody. The picture on the right is blocked with the synthesized peptide.