



PGRMC2 Polyclonal Antibody

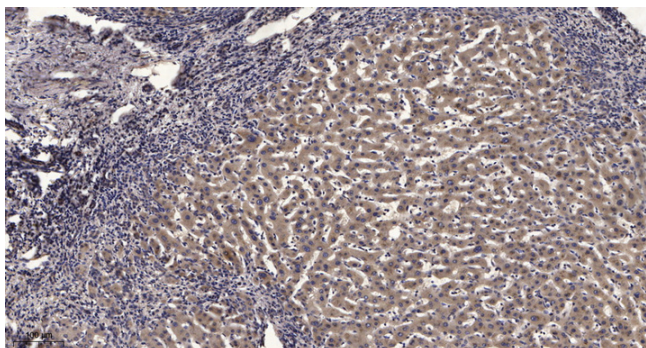
Catalog No	YP-Ab-03323
Isotype	IgG
Reactivity	Human;Mouse;Rat
Applications	WB;ELISA;IHC
Gene Name	PGRMC2
Protein Name	Membrane-associated progesterone receptor component 2
Immunogen	The antiserum was produced against synthesized peptide derived from human PGRMC2. AA range:174-223
Specificity	PGRMC2 Polyclonal Antibody detects endogenous levels of PGRMC2 protein.
Formulation	Liquid in PBS containing 50% glycerol, 0.5% BSA and 0.02% sodium azide.
Source	Polyclonal, Rabbit,IgG
Purification	The antibody was affinity-purified from rabbit antiserum by affinity-chromatography using epitope-specific immunogen.
Dilution	WB 1:500-2000;IHC-p 1:50-300; ELISA 2000-20000
Concentration	1 mg/ml
Purity	≥90%
Storage Stability	-20°C/1 year
Synonyms	PGRMC2; DG6; PMBP; Membrane-associated progesterone receptor component 2; Progesterone membrane-binding protein; Steroid receptor protein DG6
Observed Band	25kD
Cell Pathway	Membrane ; Single-pass membrane protein . Nucleus envelope . Endoplasmic reticulum .
Tissue Specificity	Expressed by endometrial glands and stroma (at protein level).
Function	domain:The cytochrome b5 heme-binding domain lacks the conserved iron-binding His residues at positions 137 and 161.,function:Receptor for steroids .,similarity:Belongs to the cytochrome b5 family. MAPR subfamily.,similarity:Contains 1 cytochrome b5 heme-binding domain.,
Background	domain:The cytochrome b5 heme-binding domain lacks the conserved iron-binding His residues at positions 137 and 161.,function:Receptor for steroids .,similarity:Belongs to the cytochrome b5 family. MAPR subfamily.,similarity:Contains 1 cytochrome b5 heme-binding domain.,
matters needing attention	Avoid repeated freezing and thawing!

**Usage suggestions**

This product can be used in immunological reaction related experiments. For more information, please consult technical personnel.

Products Images

Western Blot analysis of various cells using PGRMC2 Polyclonal Antibody diluted at 1:1000



Immunohistochemical analysis of paraffin-embedded human liver cancer. 1, Antibody was diluted at 1:200(4° overnight). 2, Tris-EDTA, pH9.0 was used for antigen retrieval. 3, Secondary antibody was diluted at 1:200(room temperature, 45min).