



NCoA-7 Polyclonal Antibody

Catalog No	YP-Ab-03319
Isotype	IgG
Reactivity	Human;Rat;Mouse;
Applications	WB;IHC;IF;ELISA
Gene Name	NCOA7
Protein Name	Nuclear receptor coactivator 7
Immunogen	The antiserum was produced against synthesized peptide derived from human NCOA7. AA range:422-471
Specificity	NCoA-7 Polyclonal Antibody detects endogenous levels of NCoA-7 protein.
Formulation	Liquid in PBS containing 50% glycerol, 0.5% BSA and 0.02% sodium azide.
Source	Polyclonal, Rabbit,IgG
Purification	The antibody was affinity-purified from rabbit antiserum by affinity-chromatography using epitope-specific immunogen.
Dilution	WB: 1/500 - 1/2000. IHC: 1/100 - 1/300. ELISA: 1/20000.. IF 1:50-200
Concentration	1 mg/ml
Purity	≥90%
Storage Stability	-20°C/1 year
Synonyms	NCOA7; ERAP140; ESNA1; Nbla00052; Nbla10993; Nuclear receptor coactivator 7; 140 kDa estrogen receptor-associated protein; Estrogen nuclear receptor coactivator 1
Observed Band	106kD
Cell Pathway	Nucleus .
Tissue Specificity	Highly expressed in brain. Weakly expressed in mammary gland, ovary, uterus, prostate, stomach, bladder, spinal cord and pancreas. Expressed in cancer cell line.
Function	function:Enhances the transcriptional activities of several nuclear receptors. Involved in the coactivation of different nuclear receptors, such as ESR1, THRB, PPARG and RARA.,similarity:Belongs to the OXR1 family.,similarity:Contains 1 LysM repeat.,similarity:Contains 1 TLD domain.,subunit:Interacts with ESR1, ESR2A, ESR2B, THRB, PPARG and RARA in a ligand-inducible manner. Interacts with the heterodimer AHR-ARNT.,tissue specificity:Highly expressed in brain. Weakly expressed in mammary gland, ovary, uterus, prostate, stomach, bladder, spinal cord and pancreas. Expressed in cancer cell line.,
Background	function:Enhances the transcriptional activities of several nuclear receptors. Involved in the coactivation of different nuclear receptors, such as ESR1, THRB, PPARG and RARA.,similarity:Belongs to the OXR1 family.,similarity:Contains 1



LysM repeat.,similarity:Contains 1 TLD domain.,subunit:Interacts with ESR1, ESR2A, ESR2B, THRB, PPARG and RARA in a ligand-inducible manner. Interacts with the heterodimer AHR-ARNT.,tissue specificity:Highly expressed in brain. Weakly expressed in mammary gland, ovary, uterus, prostate, stomach, bladder, spinal cord and pancreas. Expressed in cancer cell line.,

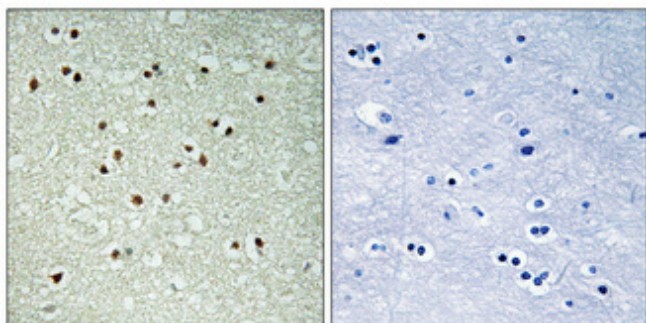
matters needing attention

Avoid repeated freezing and thawing!

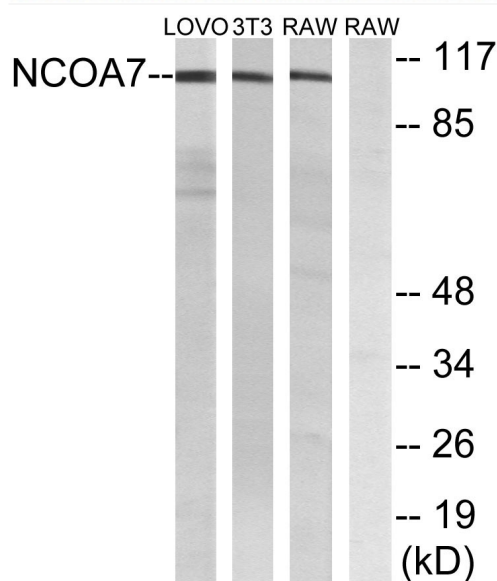
Usage suggestions

This product can be used in immunological reaction related experiments. For more information, please consult technical personnel.

Products Images



Immunohistochemical analysis of paraffin-embedded Human brain. Antibody was diluted at 1:100(4° overnight). High-pressure and temperature Tris-EDTA,pH8.0 was used for antigen retrieval. Negative contrl (right) obtained from antibody was pre-absorbed by immunogen peptide.



Western blot analysis of lysates from LOVO, NIH/3T3, and RAW264.7 cells, using NCOA7 Antibody. The lane on the right is blocked with the synthesized peptide.