



ARP-1 Polyclonal Antibody

Catalog No	YP-Ab-03307
Isotype	IgG
Reactivity	Human;Mouse;Rat
Applications	WB;IHC;IF;ELISA
Gene Name	NR2F2
Protein Name	COUP transcription factor 2
Immunogen	The antiserum was produced against synthesized peptide derived from human COT2. AA range:1-50
Specificity	ARP-1 Polyclonal Antibody detects endogenous levels of ARP-1 protein.
Formulation	Liquid in PBS containing 50% glycerol, 0.5% BSA and 0.02% sodium azide.
Source	Polyclonal, Rabbit,IgG
Purification	The antibody was affinity-purified from rabbit antiserum by affinity-chromatography using epitope-specific immunogen.
Dilution	Western Blot: 1/500 - 1/2000. Immunohistochemistry: 1/100 - 1/300. Immunofluorescence: 1/200 - 1/1000. ELISA: 1/10000. Not yet tested in other applications.
Concentration	1 mg/ml
Purity	≥90%
Storage Stability	-20°C/1 year
Synonyms	NR2F2; ARP1; TFCOUP2; COUP transcription factor 2; COUP-TF2; Apolipoprotein A-I regulatory protein 1; ARP-1; COUP transcription factor II; COUP-TF II; Nuclear receptor subfamily 2 group F member 2
Observed Band	45kD
Cell Pathway	Nucleus.
Tissue Specificity	Ubiquitous. Expressed in the stromal cells of developing fetal ovaries (PubMed:29478779).
Function	function:Regulation of the apolipoprotein A-I gene transcription. Binds to DNA site A.,similarity:Belongs to the nuclear hormone receptor family.,similarity:Belongs to the nuclear hormone receptor family. NR2 subfamily.,similarity:Contains 1 nuclear receptor DNA-binding domain.,subunit:Interacts with SQSTM1 (By similarity). Binds DNA as a homodimer.,tissue specificity:Found in all tissues.,
Background	This gene encodes a member of the steroid thyroid hormone superfamily of nuclear receptors. The encoded protein is a ligand inducible transcription factor that is involved in the regulation of many different genes. Alternate splicing results in multiple transcript variants. [provided by RefSeq, Mar 2010],



matters needing attention

Avoid repeated freezing and thawing!

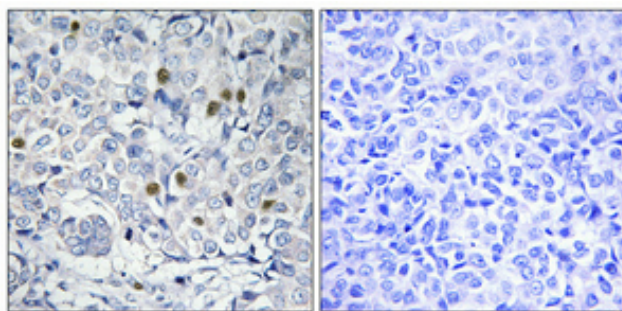
Usage suggestions

This product can be used in immunological reaction related experiments. For more information, please consult technical personnel.

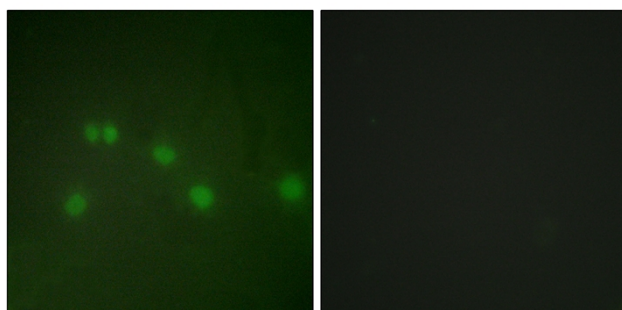
Products Images



Western Blot analysis of various cells using ARP-1 Polyclonal Antibody cells nucleus extracted by Minute TM Cytoplasmic and Nuclear Fractionation kit (SC-003, Invent biotech, MN, USA).



Immunohistochemical analysis of paraffin-embedded Human breast cancer. Antibody was diluted at 1:100 (4° overnight). High-pressure and temperature Tris-EDTA, pH 8.0 was used for antigen retrieval. Negative control (right) obtained from antibody was pre-absorbed by immunogen peptide.



Immunofluorescence analysis of HUVEC cells, using COT2 Antibody. The picture on the right is blocked with the synthesized peptide.



Western blot analysis of lysates from HUVEC cells, using COT2 Antibody. The lane on the right is blocked with the synthesized peptide.

