



Calretinin Polyclonal Antibody

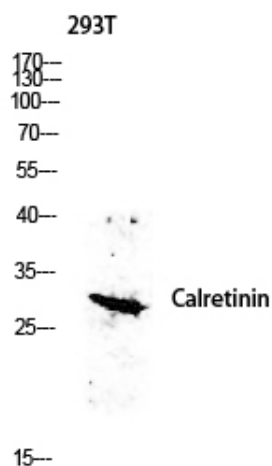
Catalog No	YP-Ab-03237
Isotype	IgG
Reactivity	Human;Mouse;Rat
Applications	WB;IHC;IF;ELISA
Gene Name	CALB2
Protein Name	calbindin 2
Immunogen	Synthesized peptide derived from calbindin 2 at AA range: 191-240
Specificity	Calretinin Polyclonal Antibody detects endogenous levels of calbindin 2
Formulation	Liquid in PBS containing 50% glycerol, 0.5% BSA and 0.02% sodium azide.
Source	Polyclonal, Rabbit,IgG
Purification	The antibody was affinity-purified from rabbit antiserum by affinity-chromatography using epitope-specific immunogen.
Dilution	WB: 1/500 - 1/2000. ELISA: 1/10000.. IF 1:50-200
Concentration	1 mg/ml
Purity	≥90%
Storage Stability	-20°C/1 year
Synonyms	Calretinin (CR;29 kDa calbindin)
Observed Band	32kD
Cell Pathway	nucleus,cytoplasm,cytosol,gap junction,neuron projection,terminal bouton,synapse,
Tissue Specificity	Brain.
Function	function:Calretinin is a calcium-binding protein which is abundant in auditory neurons.,online information:Calbindin entry,similarity:Belongs to the calbindin family.,similarity:Contains 6 EF-hand domains.,tissue specificity:Brain.,
Background	This gene encodes an intracellular calcium-binding protein belonging to the troponin C superfamily. Members of this protein family have six EF-hand domains which bind calcium. This protein plays a role in diverse cellular functions, including message targeting and intracellular calcium buffering. It also functions as a modulator of neuronal excitability, and is a diagnostic marker for some human diseases, including Hirschsprung disease and some cancers. Alternative splicing results in multiple transcript variants. [provided by RefSeq, Jun 2010],
matters needing attention	Avoid repeated freezing and thawing!



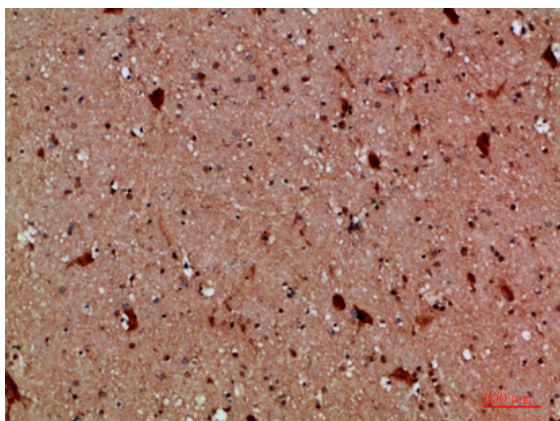
Usage suggestions

This product can be used in immunological reaction related experiments. For more information, please consult technical personnel.

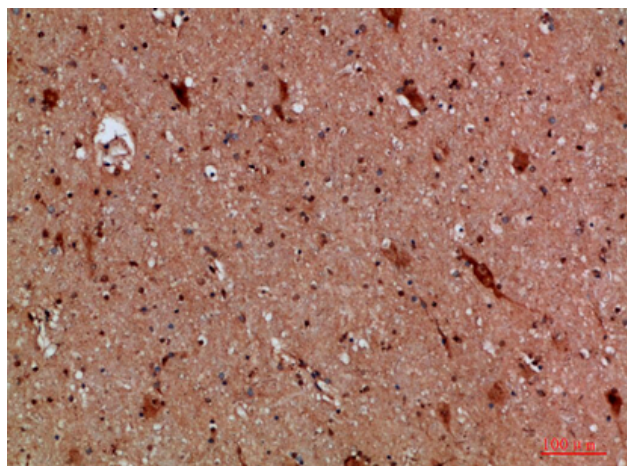
Products Images



Western blot analysis of 293T lysis using CALB2 antibody. Antibody was diluted at 1:500. Secondary antibody(catalog#:RS0002) was diluted at 1:20000



Immunohistochemical analysis of paraffin-embedded human-brain, antibody was diluted at 1:200



Immunohistochemical analysis of paraffin-embedded human-brain, antibody was diluted at 1:200