



WAVE3 Polyclonal Antibody

Catalog No	YP-Ab-03216
Isotype	IgG
Reactivity	Human;Mouse
Applications	WB;IHC;IF;ELISA
Gene Name	WASF3
Protein Name	Wiskott-Aldrich syndrome protein family member 3
Immunogen	The antiserum was produced against synthesized peptide derived from human WASF3. AA range:151-200
Specificity	WAVE3 Polyclonal Antibody detects endogenous levels of WAVE3 protein.
Formulation	Liquid in PBS containing 50% glycerol, 0.5% BSA and 0.02% sodium azide.
Source	Polyclonal, Rabbit,IgG
Purification	The antibody was affinity-purified from rabbit antiserum by affinity-chromatography using epitope-specific immunogen.
Dilution	WB: 1/500 - 1/2000. IHC: 1/100 - 1/300. ELISA: 1/10000.. IF 1:50-200
Concentration	1 mg/ml
Purity	≥90%
Storage Stability	-20°C/1 year
Synonyms	WASF3; KIAA0900; SCAR3; WAVE3; Wiskott-Aldrich syndrome protein family member 3; WASP family protein member 3; Protein WAVE-3; Verprolin homology domain-containing protein 3
Observed Band	55kD
Cell Pathway	Cytoplasm, cytoskeleton.
Tissue Specificity	Expressed in ovary and brain.
Function	domain: Binds the Arp2/3 complex through the C-terminal region and actin through verprolin homology (VPH) domain.,function: Downstream effector molecules involved in the transmission of signals from tyrosine kinase receptors and small GTPases to the actin cytoskeleton.,similarity: Belongs to the SCAR/WAVE family.,similarity: Contains 1 WH2 domain.,subunit: Binds actin and the Arp2/3 complex.,tissue specificity: Expressed in ovary and brain.,
Background	This gene encodes a member of the Wiskott-Aldrich syndrome protein family. The gene product is a protein that forms a multiprotein complex that links receptor kinases and actin. Binding to actin occurs through a C-terminal verprolin homology domain in all family members. The multiprotein complex serves to transduce signals that involve changes in cell shape, motility or function. A pseudogene of this gene have been defined on chromosome 6. Alternative



splicing results in multiple transcript variants [provided by RefSeq, May 2014],

matters needing attention

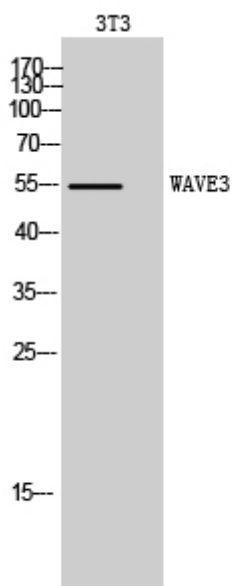
Avoid repeated freezing and thawing!

Usage suggestions

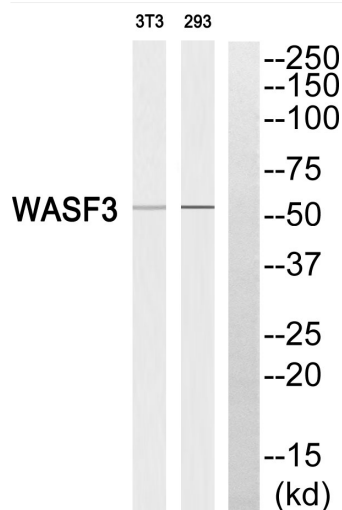
This product can be used in immunological reaction related experiments. For more information, please consult technical personnel.



Products Images



Western Blot analysis of 3T3 cells using WAVE3 Polyclonal Antibody. Secondary antibody(catalog#:RS0002) was diluted at 1:20000

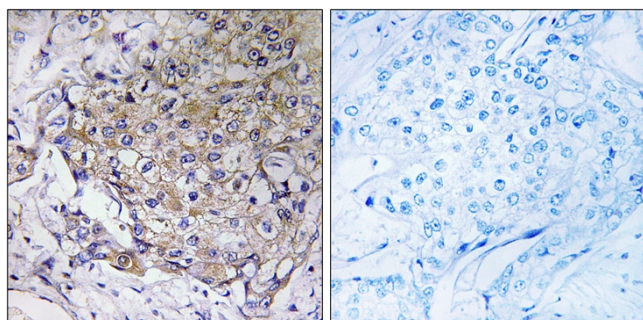


Western blot analysis of WASF3 Antibody. The lane on the right is blocked with the WASF3 peptide.



YT4899_3.jpg

ERROR 42



Immunohistochemistry analysis of paraffin-embedded human breast carcinoma tissue, using WASF3 Antibody. The picture on the right is blocked with the synthesized peptide.