



# TCP-1 $\eta$ Polyclonal Antibody

<b>Catalog No</b>	YP-Ab-03195
<b>Isotype</b>	IgG
<b>Reactivity</b>	Human;Mouse;Rat
<b>Applications</b>	WB;ELISA
<b>Gene Name</b>	CCT7
<b>Protein Name</b>	T-complex protein 1 subunit eta
<b>Immunogen</b>	The antiserum was produced against synthesized peptide derived from human CCT7. AA range:221-270
<b>Specificity</b>	TCP-1 $\eta$ Polyclonal Antibody detects endogenous levels of TCP-1 $\eta$ protein.
<b>Formulation</b>	Liquid in PBS containing 50% glycerol, 0.5% BSA and 0.02% sodium azide.
<b>Source</b>	Polyclonal, Rabbit,IgG
<b>Purification</b>	The antibody was affinity-purified from rabbit antiserum by affinity-chromatography using epitope-specific immunogen.
<b>Dilution</b>	Western Blot: 1/500 - 1/2000. ELISA: 1/5000. Not yet tested in other applications.
<b>Concentration</b>	1 mg/ml
<b>Purity</b>	$\geq 90\%$
<b>Storage Stability</b>	-20°C/1 year
<b>Synonyms</b>	CCT7; CCTH; NIP7-1; T-complex protein 1 subunit eta; TCP-1-eta; CCT-eta; HIV-1 Nef-interacting protein
<b>Observed Band</b>	59kD
<b>Cell Pathway</b>	Cytoplasm .
<b>Tissue Specificity</b>	Adipose tissue,Brain,Cajal-Retzius cell,Cerebellum,Colon carcinoma,
<b>Function</b>	function:Molecular chaperone; assist the folding of proteins upon ATP hydrolysis. Known to play a role, in vitro, in the folding of actin and tubulin.,similarity:Belongs to the chaperonin (HSP60) family.,similarity:Belongs to the TCP-1 chaperonin family.,subunit:Heterooligomeric complex of about 850 to 900 kDa that forms two stacked rings, 12 to 16 nm in diameter. Interacts with PACRG.,
<b>Background</b>	This gene encodes a molecular chaperone that is a member of the chaperonin containing TCP1 complex (CCT), also known as the TCP1 ring complex (TRiC). This complex consists of two identical stacked rings, each containing eight different proteins. Unfolded polypeptides enter the central cavity of the complex and are folded in an ATP-dependent manner. The complex folds various proteins, including actin and tubulin. Alternative splicing results in multiple transcript variants. Related pseudogenes have been identified on chromosomes 5 and 6. [provided by RefSeq, Oct 2009],



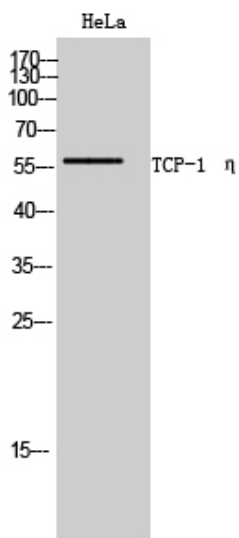
**matters needing attention**

Avoid repeated freezing and thawing!

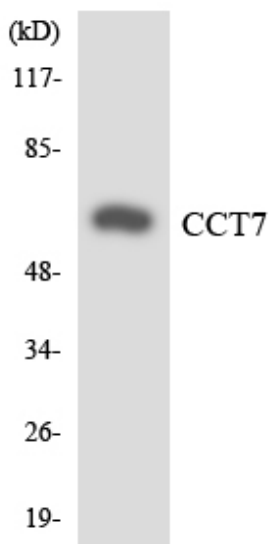
**Usage suggestions**

This product can be used in immunological reaction related experiments. For more information, please consult technical personnel.

**Products Images**



Western Blot analysis of HeLa cells using TCP-1  $\eta$  Polyclonal Antibody



Western blot analysis of the lysates from HT-29 cells using CCT7 antibody.