



# SPZ1 Polyclonal Antibody

<b>Catalog No</b>	YP-Ab-03189
<b>Isotype</b>	IgG
<b>Reactivity</b>	Human;Rat;Mouse;
<b>Applications</b>	IHC;IF;WB;ELISA
<b>Gene Name</b>	SPZ1
<b>Protein Name</b>	Spermatogenic leucine zipper protein 1
<b>Immunogen</b>	The antiserum was produced against synthesized peptide derived from human SPZ1. AA range:111-160
<b>Specificity</b>	SPZ1 Polyclonal Antibody detects endogenous levels of SPZ1 protein.
<b>Formulation</b>	Liquid in PBS containing 50% glycerol, 0.5% BSA and 0.02% sodium azide.
<b>Source</b>	Polyclonal, Rabbit,IgG
<b>Purification</b>	The antibody was affinity-purified from rabbit antiserum by affinity-chromatography using epitope-specific immunogen.
<b>Dilution</b>	WB 1:500-2000 Immunohistochemistry: 1/100 - 1/300. Immunofluorescence: 1/200 - 1/1000. ELISA: 1/20000. Not yet tested in other applications.
<b>Concentration</b>	1 mg/ml
<b>Purity</b>	≥90%
<b>Storage Stability</b>	-20°C/1 year
<b>Synonyms</b>	SPZ1; TSP1; Spermatogenic leucine zipper protein 1; Testis-specific protein 1; Testis-specific protein NYD-TSP1
<b>Observed Band</b>	133kD
<b>Cell Pathway</b>	Cytoplasm . Nucleus .
<b>Tissue Specificity</b>	Specifically and strongly expressed in the testis. Expressed in several tumor cell lines.
<b>Function</b>	function:Transcription factor that binds to the DNA sequence 5'-CANNTG-3'(E box) and the G-box motif. May play an important role in the regulation of cell proliferation and differentiation during spermatogenesis.,PTM:Phosphorylated by ERK1 and ERK2.,similarity:Contains 1 basic helix-loop-helix (bHLH) domain.,subunit:Interacts with PPP1CC isoform gamma-2.,tissue specificity:Specifically and strongly expressed in the testis. Expressed in several tumor cell lines.,
<b>Background</b>	This gene encodes a bHLH-zip transcription factor which functions in the mitogen-activate protein kinase (MAPK) signaling pathway. Because of its role in the upregulation of cell proliferation and tumorigenesis, this gene may serve as a target for Ras-induced tumor treatments. [provided by RefSeq, Oct 2011],

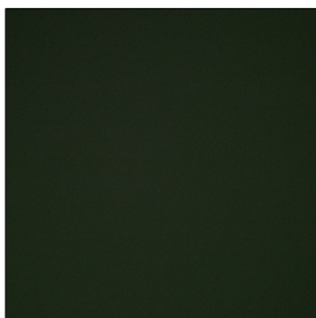
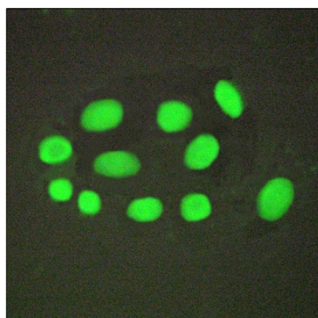
**matters needing attention**

Avoid repeated freezing and thawing!

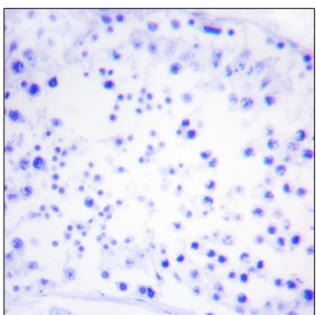
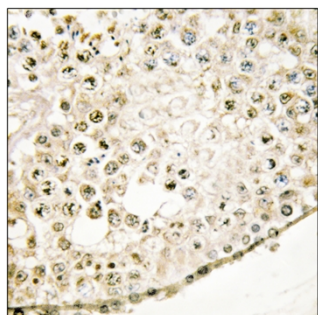
**Usage suggestions**

This product can be used in immunological reaction related experiments. For more information, please consult technical personnel.

## Products Images



Immunofluorescence analysis of A549 cells, using SPZ1 Antibody. The picture on the right is blocked with the synthesized peptide.



Immunohistochemistry analysis of paraffin-embedded human testis tissue, using SPZ1 Antibody. The picture on the right is blocked with the synthesized peptide.