



Spectrin β V Polyclonal Antibody

Catalog No	YP-Ab-03188
Isotype	IgG
Reactivity	Human;Rat;Mouse;
Applications	IHC;IF;ELISA
Gene Name	SPTBN5
Protein Name	Spectrin beta chain non-erythrocytic 5
Immunogen	The antiserum was produced against synthesized peptide derived from human SPTBN5. AA range:481-530
Specificity	Spectrin β V Polyclonal Antibody detects endogenous levels of Spectrin β V protein.
Formulation	Liquid in PBS containing 50% glycerol, 0.5% BSA and 0.02% sodium azide.
Source	Polyclonal, Rabbit,IgG
Purification	The antibody was affinity-purified from rabbit antiserum by affinity-chromatography using epitope-specific immunogen.
Dilution	IHC: 1/100 - 1/300. ELISA: 1/40000.. IF 1:50-200
Concentration	1 mg/ml
Purity	$\geq 90\%$
Storage Stability	-20°C/1 year
Synonyms	SPTBN5; BSPECV; HUBSPECV; HUSPECV; Spectrin beta chain; non-erythrocytic 5; Beta-V spectrin
Observed Band	
Cell Pathway	Cytoplasm, cytoskeleton. Detected prominently in the outer segments of photoreceptor rods and cones and in the basolateral membrane and cytosol of gastric epithelial cells.
Tissue Specificity	Expressed at very low levels in many tissues, with strongest expression in cerebellum, spinal cord, stomach, pituitary gland, liver, pancreas, salivary gland, kidney, bladder, and heart.
Function	similarity:Belongs to the spectrin family.,similarity:Contains 1 PH domain.,similarity:Contains 2 CH (calponin-homology) domains.,similarity:Contains 31 spectrin repeats.,subcellular location:Detected prominently in the outer segments of photoreceptor rods and cones and in the basolateral membrane and cytosol of gastric epithelial cells.,subunit:Probably associates with an alpha chain.,tissue specificity:Expressed at very low levels in many tissues, with strongest expression in cerebellum, spinal cord, stomach, pituitary gland, liver, pancreas, salivary gland, kidney, bladder, and heart.,
Background	similarity:Belongs to the spectrin family.,similarity:Contains 1 PH domain.,similarity:Contains 2 CH (calponin-homology) domains.,similarity:Contains 31 spectrin repeats.,subcellular location:Detected



prominently in the outer segments of photoreceptor rods and cones and in the basolateral membrane and cytosol of gastric epithelial cells.,subunit:Probably associates with an alpha chain.,tissue specificity:Expressed at very low levels in many tissues, with strongest expression in cerebellum, spinal cord, stomach, pituitary gland, liver, pancreas, salivary gland, kidney, bladder, and heart.,

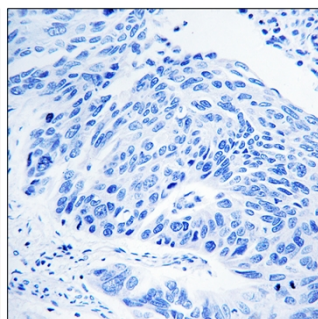
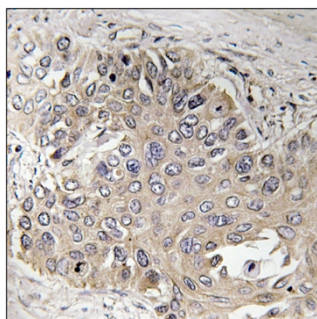
matters needing attention

Avoid repeated freezing and thawing!

Usage suggestions

This product can be used in immunological reaction related experiments. For more information, please consult technical personnel.

Products Images



Immunohistochemistry analysis of paraffin-embedded human lung carcinoma, using SPTBN5 Antibody. The picture on the right is blocked with the synthesized peptide.