

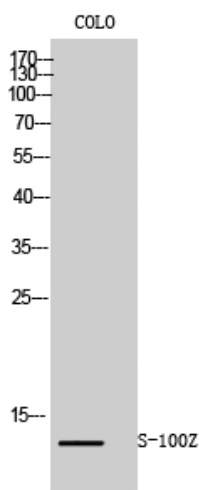


# S-100Z Polyclonal Antibody

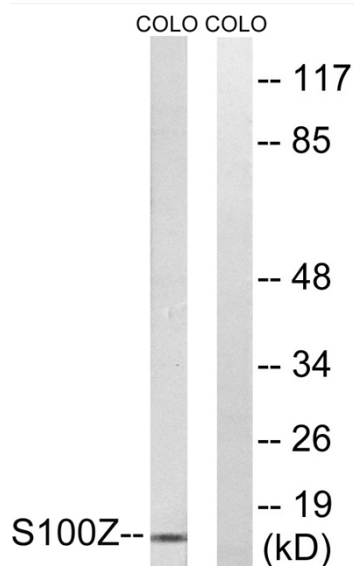
<b>Catalog No</b>	YP-Ab-03184
<b>Isotype</b>	IgG
<b>Reactivity</b>	Human;Rat;Mouse;
<b>Applications</b>	WB;IHC;IF;ELISA
<b>Gene Name</b>	S100Z
<b>Protein Name</b>	Protein S100-Z
<b>Immunogen</b>	The antiserum was produced against synthesized peptide derived from human S100Z. AA range:2-51
<b>Specificity</b>	S-100Z Polyclonal Antibody detects endogenous levels of S-100Z protein.
<b>Formulation</b>	Liquid in PBS containing 50% glycerol, 0.5% BSA and 0.02% sodium azide.
<b>Source</b>	Polyclonal, Rabbit,IgG
<b>Purification</b>	The antibody was affinity-purified from rabbit antiserum by affinity-chromatography using epitope-specific immunogen.
<b>Dilution</b>	WB: 1/500 - 1/2000. IHC: 1/100 - 1/300. ELISA: 1/20000.. IF 1:50-200
<b>Concentration</b>	1 mg/ml
<b>Purity</b>	≥90%
<b>Storage Stability</b>	-20°C/1 year
<b>Synonyms</b>	S100Z; Protein S100-Z; S100 calcium-binding protein Z
<b>Observed Band</b>	12kD
<b>Cell Pathway</b>	
<b>Tissue Specificity</b>	Highest level of expression in spleen and leukocytes.
<b>Function</b>	miscellaneous:This protein binds two calcium ions.,similarity:Belongs to the S-100 family.,similarity:Contains 2 EF-hand domains.,subunit:Homodimer. Interacts with S100P.,tissue specificity:Highest level of expression in spleen and leukocytes.,
<b>Background</b>	Members of the S100 protein family contain 2 calcium-binding EF-hands and exhibit cell-type specific expression patterns. For additional background information on S100 proteins, see MIM 114085.[supplied by OMIM, Mar 2008],
<b>matters needing attention</b>	Avoid repeated freezing and thawing!
<b>Usage suggestions</b>	This product can be used in immunological reaction related experiments. For more information, please consult technical personnel.



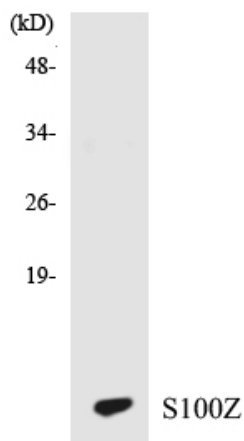
## Products Images



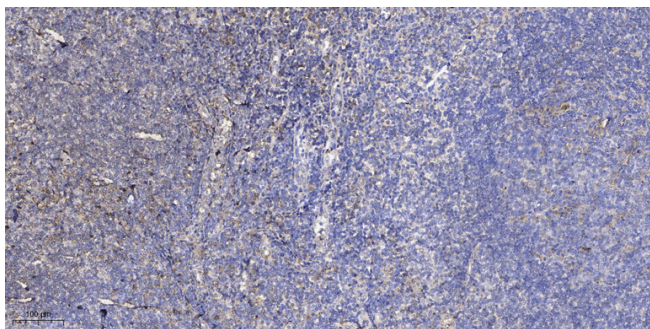
Western Blot analysis of COLO cells using S-100Z Polyclonal Antibody



Western blot analysis of lysates from COLO cells, using S100Z Antibody. The lane on the right is blocked with the synthesized peptide.



Western blot analysis of the lysates from HT-29 cells using S100Z antibody.



Immunohistochemical analysis of paraffin-embedded human tonsil. 1, Antibody was diluted at 1:200(4° overnight). 2, Tris-EDTA,pH9.0 was used for antigen retrieval. 3,Secondary antibody was diluted at 1:200(room temperature, 30min).