

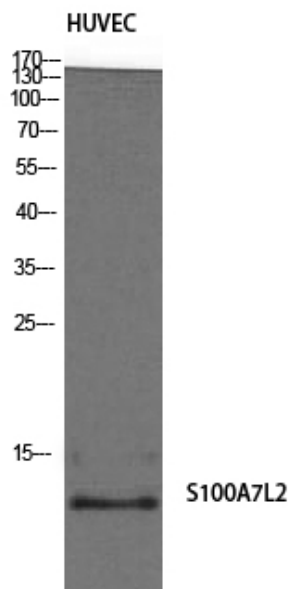


S-100A7L2 Polyclonal Antibody

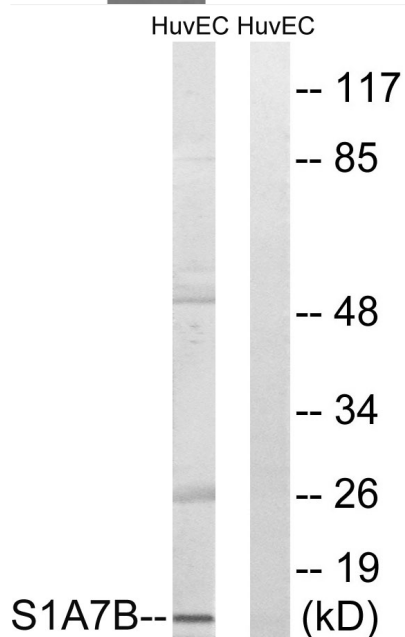
Catalog No	YP-Ab-03182
Isotype	IgG
Reactivity	Human;Rat;Mouse;
Applications	WB;ELISA
Gene Name	S100A7L2
Protein Name	Protein S100-A7-like 2
Immunogen	The antiserum was produced against synthesized peptide derived from human S100A7L2. AA range:38-87
Specificity	S-100A7L2 Polyclonal Antibody detects endogenous levels of S-100A7L2 protein.
Formulation	Liquid in PBS containing 50% glycerol, 0.5% BSA and 0.02% sodium azide.
Source	Polyclonal, Rabbit,IgG
Purification	The antibody was affinity-purified from rabbit antiserum by affinity-chromatography using epitope-specific immunogen.
Dilution	Western Blot: 1/500 - 1/2000. ELISA: 1/10000. Not yet tested in other applications.
Concentration	1 mg/ml
Purity	≥90%
Storage Stability	-20°C/1 year
Synonyms	S100A7L2; S100A7B; Protein S100-A7-like 2; S100 calcium-binding protein A7-like 2
Observed Band	11kD
Cell Pathway	
Tissue Specificity	
Function	similarity:Belongs to the S-100 family.,similarity:Contains 2 EF-hand domains.,
Background	similarity:Belongs to the S-100 family.,similarity:Contains 2 EF-hand domains.,
matters needing attention	Avoid repeated freezing and thawing!
Usage suggestions	This product can be used in immunological reaction related experiments. For more information, please consult technical personnel.



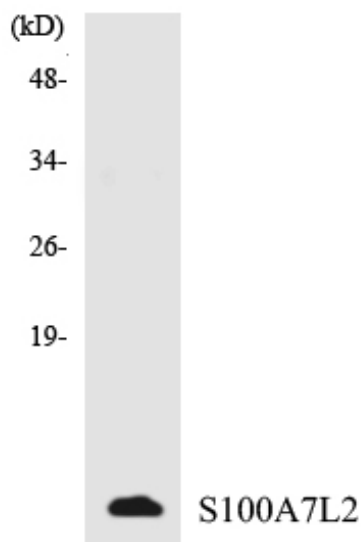
Products Images



Western Blot analysis of HuvEc cells using S-100A7L2 Polyclonal Antibody



Western blot analysis of lysates from HUVEC cells, using S100A7L2 Antibody. The lane on the right is blocked with the synthesized peptide.



Western blot analysis of the lysates from HepG2 cells using S100A7L2 antibody.