



# S-100A3 Polyclonal Antibody

<b>Catalog No</b>	YP-Ab-03180
<b>Isotype</b>	IgG
<b>Reactivity</b>	Human;Mouse;Rat
<b>Applications</b>	WB;IHC;IF;ELISA
<b>Gene Name</b>	S100A3
<b>Protein Name</b>	Protein S100-A3
<b>Immunogen</b>	The antiserum was produced against synthesized peptide derived from human S100A3. AA range:26-75
<b>Specificity</b>	S-100A3 Polyclonal Antibody detects endogenous levels of S-100A3 protein.
<b>Formulation</b>	Liquid in PBS containing 50% glycerol, 0.5% BSA and 0.02% sodium azide.
<b>Source</b>	Polyclonal, Rabbit,IgG
<b>Purification</b>	The antibody was affinity-purified from rabbit antiserum by affinity-chromatography using epitope-specific immunogen.
<b>Dilution</b>	IHC: 1/100 - 1/300. ELISA: 1/40000.. IF 1:50-200
<b>Concentration</b>	1 mg/ml
<b>Purity</b>	≥90%
<b>Storage Stability</b>	-20°C/1 year
<b>Synonyms</b>	S100A3; S100E; Protein S100-A3; Protein S-100E; S100 calcium-binding protein A3
<b>Observed Band</b>	22kD
<b>Cell Pathway</b>	Cytoplasm .
<b>Tissue Specificity</b>	Skin specific, specifically expressed at the inner endocuticle of hair fibers.
<b>Function</b>	function: Binds both calcium and zinc. Probably binds 2 zinc ions per molecule. May be involved in calcium-dependent cuticle cell differentiation and hair shaft formation.,similarity: Belongs to the S-100 family.,similarity: Contains 2 EF-hand domains.,subunit: Homodimer.,tissue specificity: Skin specific.,
<b>Background</b>	S100 calcium binding protein A3(S100A3) Homo sapiens The protein encoded by this gene is a member of the S100 family of proteins containing 2 EF-hand calcium-binding motifs. S100 proteins are localized in the cytoplasm and/or nucleus of a wide range of cells, and involved in the regulation of a number of cellular processes such as cell cycle progression and differentiation. S100 genes include at least 13 members which are located as a cluster on chromosome 1q21. This protein has the highest content of cysteines of all S100 proteins, has a high affinity for Zinc, and is highly expressed in human hair cuticle. The precise function of this protein is unknown. [provided by RefSeq, Jul 2008],

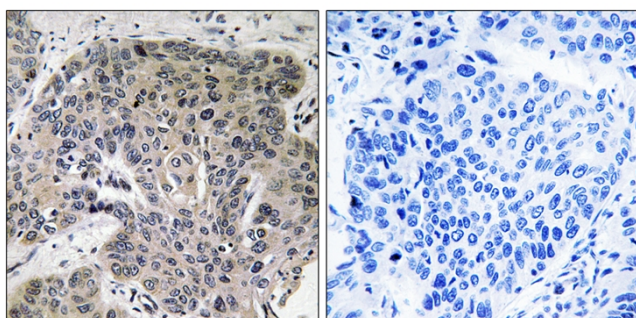
**matters needing attention**

Avoid repeated freezing and thawing!

**Usage suggestions**

This product can be used in immunological reaction related experiments. For more information, please consult technical personnel.

## Products Images



Immunohistochemistry analysis of paraffin-embedded human lung carcinoma tissue, using S100A3 Antibody. The picture on the right is blocked with the synthesized peptide.