



# S-100A10 Polyclonal Antibody

<b>Catalog No</b>	YP-Ab-03178
<b>Isotype</b>	IgG
<b>Reactivity</b>	Human;Mouse;Rat
<b>Applications</b>	WB;IHC;IF;ELISA
<b>Gene Name</b>	S100A10
<b>Protein Name</b>	Protein S100-A10
<b>Immunogen</b>	The antiserum was produced against synthesized peptide derived from human S-100A10. AA range:3-52
<b>Specificity</b>	S-100A10 Polyclonal Antibody detects endogenous levels of S-100A10 protein.
<b>Formulation</b>	Liquid in PBS containing 50% glycerol, 0.5% BSA and 0.02% sodium azide.
<b>Source</b>	Polyclonal, Rabbit,IgG
<b>Purification</b>	The antibody was affinity-purified from rabbit antiserum by affinity-chromatography using epitope-specific immunogen.
<b>Dilution</b>	WB: 1/500 - 1/2000. IHC: 1/100 - 1/300. ELISA: 1/40000.. IF 1:50-200
<b>Concentration</b>	1 mg/ml
<b>Purity</b>	≥90%
<b>Storage Stability</b>	-20°C/1 year
<b>Synonyms</b>	S100A10; ANX2LG; CAL1L; CLP11; Protein S100-A10; Calpactin I light chain; Calpactin-1 light chain; Cellular ligand of annexin II; S100 calcium-binding protein A10; p10 protein; p11
<b>Observed Band</b>	11kD
<b>Cell Pathway</b>	integral component of membrane,extrinsic component of plasma membrane,membrane raft,extracellular exosome,
<b>Tissue Specificity</b>	Brain,Keratinocyte,
<b>Function</b>	function:Because S100A10 induces the dimerization of ANXA2/p36, it may function as a regulator of protein phosphorylation in that the ANXA2 monomer is the preferred target (in vitro) of tyrosine-specific kinase.,miscellaneous:Does not appear to bind calcium. Contains 2 ancestral calcium site related to EF-hand domains that have lost their ability to bind calcium.,similarity:Belongs to the S-100 family.,subunit:Heterotetramer containing 2 light chains of S100A10/p11 and 2 heavy chains of ANXA2/p36. Interacts with SCN10A.,
<b>Background</b>	The protein encoded by this gene is a member of the S100 family of proteins containing 2 EF-hand calcium-binding motifs. S100 proteins are localized in the cytoplasm and/or nucleus of a wide range of cells, and involved in the regulation of a number of cellular processes such as cell cycle progression and differentiation. S100 genes include at least 13 members which are located as a



cluster on chromosome 1q21. This protein may function in exocytosis and endocytosis. [provided by RefSeq, Jul 2008],

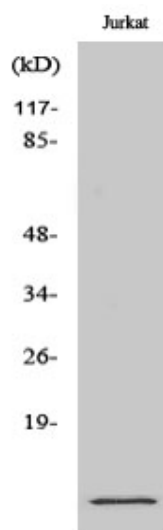
#### matters needing attention

Avoid repeated freezing and thawing!

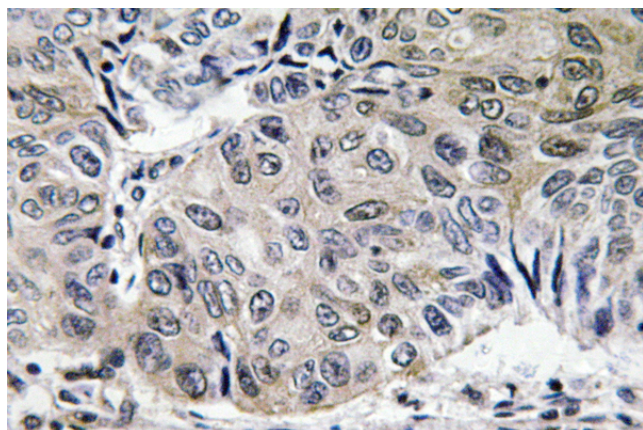
#### Usage suggestions

This product can be used in immunological reaction related experiments. For more information, please consult technical personnel.

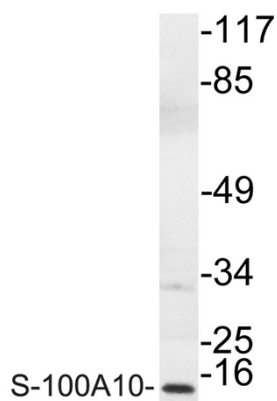
### Products Images



Western Blot analysis of various cells using S-100A10 Polyclonal Antibody



Immunohistochemistry analysis of S-100A10 antibody in paraffin-embedded human lung carcinoma tissue.



Western blot analysis of lysate from COLO cells, using S-100A10 antibody.