



Repetin Polyclonal Antibody

Catalog No	YP-Ab-03176
Isotype	IgG
Reactivity	Human;Rat;Mouse;
Applications	WB;IHC
Gene Name	RPTN
Protein Name	Repetin
Immunogen	The antiserum was produced against synthesized peptide derived from human RPTN. AA range:648-697
Specificity	Repetin Polyclonal Antibody detects endogenous levels of Repetin protein.
Formulation	Liquid in PBS containing 50% glycerol, 0.5% BSA and 0.02% sodium azide.
Source	Polyclonal, Rabbit,IgG
Purification	The antibody was affinity-purified from rabbit antiserum by affinity-chromatography using epitope-specific immunogen.
Dilution	WB 1:500-2000;IHC-p 1:50-300
Concentration	1 mg/ml
Purity	≥90%
Storage Stability	-20°C/1 year
Synonyms	RPTN; Repetin
Observed Band	90kD
Cell Pathway	Secreted, extracellular space, extracellular matrix.
Tissue Specificity	Expression is scattered in the normal epidermis but strong in the acrosyringium, the inner hair root sheath and in the filiform papilli of the tongue.
Function	domain:Can be divided into a N-terminal domain with significant homology to S100-like calcium-binding proteins, a central domain containing a series of short tandem repeats, and two flanking segments with low homology to the consensus sequences of the central repeats.,function:Involved in the cornified cell envelope formation. Multifunctional epidermal matrix protein. Reversibly binds calcium.,PTM:Phosphorylated upon DNA damage, probably by ATM or ATR.,PTM:Potential substrate of transglutaminase. Some arginines are probably converted to citrullines by peptidylarginine deimidase.,similarity:Belongs to the S100-fused protein family.,similarity:Contains 2 EF-hand domains.,tissue specificity:Expression is scattered in the normal epidermis but strong in the acrosyringium, the inner hair root sheath and in the filiform papilli of the tongue.,
Background	domain:Can be divided into a N-terminal domain with significant homology to S100-like calcium-binding proteins, a central domain containing a series of short tandem repeats, and two flanking segments with low homology to the consensus



sequences of the central repeats.,function:Involved in the cornified cell envelope formation. Multifunctional epidermal matrix protein. Reversibly binds calcium.,PTM:Phosphorylated upon DNA damage, probably by ATM or ATR.,PTM:Potential substrate of transglutaminase. Some arginines are probably converted to citrullines by peptidylarginine deimidase.,similarity:Belongs to the S100-fused protein family.,similarity:Contains 2 EF-hand domains.,tissue specificity:Expression is scattered in the normal epidermis but strong in the acrosyngium, the inner hair root sheat and in the filiform papilli of the tongue.,

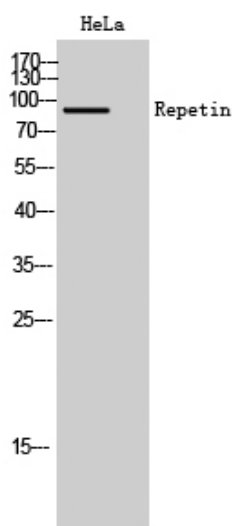
matters needing attention

Avoid repeated freezing and thawing!

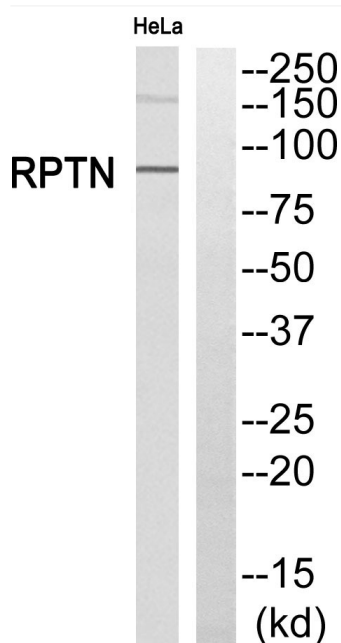
Usage suggestions

This product can be used in immunological reaction related experiments. For more information, please consult technical personnel.

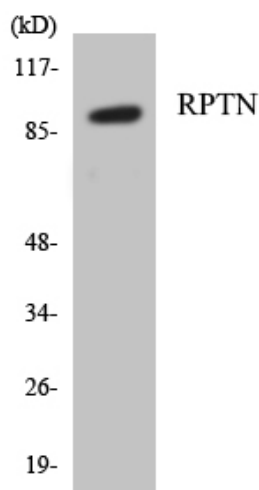
Products Images



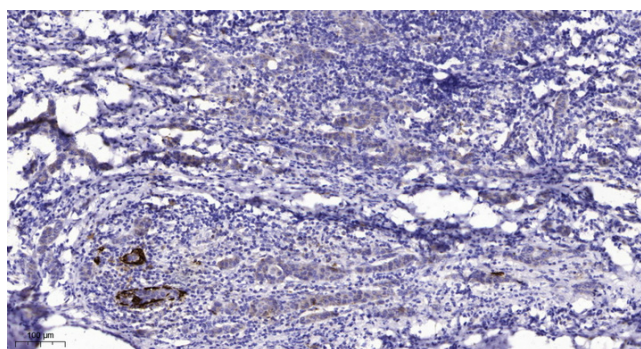
Western Blot analysis of HeLa cells using Repetin Polyclonal Antibody



Western blot analysis of RPTN Antibody. The lane on the right is blocked with the RPTN peptide.



Western blot analysis of the lysates from HepG2 cells using RPTN antibody.



Immunohistochemical analysis of paraffin-embedded human Breast cancer. 1, Antibody was diluted at 1:200(4° overnight). 2, Tris-EDTA, pH9.0 was used for antigen retrieval. 3, Secondary antibody was diluted at 1:200(room temperature, 45min).