

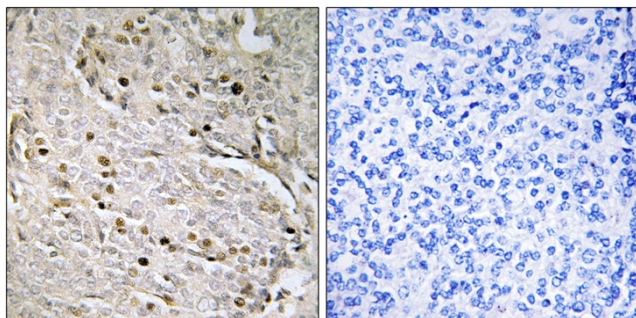


# POTE-8 Polyclonal Antibody

<b>Catalog No</b>	YP-Ab-03173
<b>Isotype</b>	IgG
<b>Reactivity</b>	Human;Rat;Mouse;
<b>Applications</b>	IHC;IF;ELISA
<b>Gene Name</b>	POTEA
<b>Protein Name</b>	POTE ankyrin domain family member A
<b>Immunogen</b>	The antiserum was produced against synthesized peptide derived from human POTEA. AA range:375-424
<b>Specificity</b>	POTE-8 Polyclonal Antibody detects endogenous levels of POTE-8 protein.
<b>Formulation</b>	Liquid in PBS containing 50% glycerol, 0.5% BSA and 0.02% sodium azide.
<b>Source</b>	Polyclonal, Rabbit,IgG
<b>Purification</b>	The antibody was affinity-purified from rabbit antiserum by affinity-chromatography using epitope-specific immunogen.
<b>Dilution</b>	IHC: 1/100 - 1/300. ELISA: 1/5000.. IF 1:50-200
<b>Concentration</b>	1 mg/ml
<b>Purity</b>	≥90%
<b>Storage Stability</b>	-20°C/1 year
<b>Synonyms</b>	POTEA; A26A1; POTE8; POTE ankyrin domain family member A; ANKRD26-like family A member 1; Prostate; ovary, testis-expressed protein on chromosome 8; POTE-8
<b>Observed Band</b>	
<b>Cell Pathway</b>	
<b>Tissue Specificity</b>	Prostate,
<b>Function</b>	similarity:Belongs to the POTE family.,similarity:Contains 5 ANK repeats.,
<b>Background</b>	similarity:Belongs to the POTE family.,similarity:Contains 5 ANK repeats.,
<b>matters needing attention</b>	Avoid repeated freezing and thawing!
<b>Usage suggestions</b>	This product can be used in immunological reaction related experiments. For more information, please consult technical personnel.



## Products Images



Immunohistochemistry analysis of paraffin-embedded human prostate carcinoma, using POTE8 Antibody. The picture on the right is blocked with the synthesized peptide.