

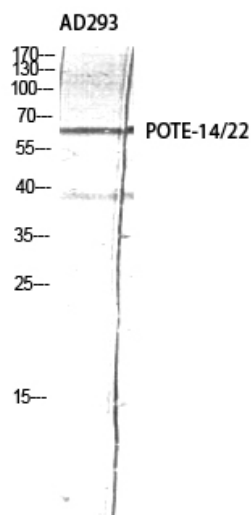


POTE-14/22 Polyclonal Antibody

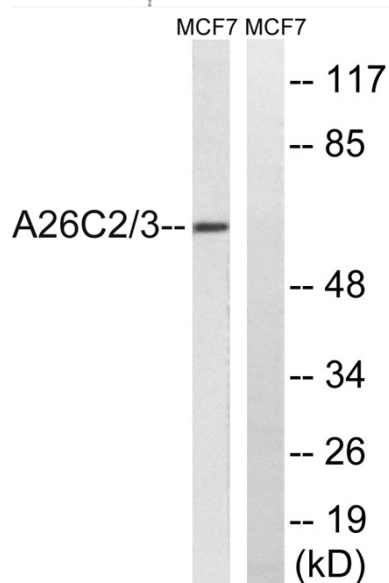
| | |
|----------------------------------|---|
| Catalog No | YP-Ab-03171 |
| Isotype | IgG |
| Reactivity | Human;Rat;Mouse; |
| Applications | WB;IHC;IF;ELISA |
| Gene Name | POTEG/POTEH |
| Protein Name | POTE ankyrin domain family member G/H |
| Immunogen | The antiserum was produced against synthesized peptide derived from human A26C2/3. AA range:178-227 |
| Specificity | POTE-14/22 Polyclonal Antibody detects endogenous levels of POTE-14/22 protein. |
| Formulation | Liquid in PBS containing 50% glycerol, 0.5% BSA and 0.02% sodium azide. |
| Source | Polyclonal, Rabbit,IgG |
| Purification | The antibody was affinity-purified from rabbit antiserum by affinity-chromatography using epitope-specific immunogen. |
| Dilution | WB: 1/500 - 1/2000. IHC: 1/100 - 1/300. ELISA: 1/40000.. IF 1:50-200 |
| Concentration | 1 mg/ml |
| Purity | ≥90% |
| Storage Stability | -20°C/1 year |
| Synonyms | POTEH; A26C3; ACTBL1; POTE22; POTE ankyrin domain family member H; ANKRD26-like family C member 3; Prostate; ovary, testis-expressed protein on chromosome 22; POTE-22; POTEG; A26C2; POTE14; POTE ankyrin domain family member G; ANKRD26-like |
| Observed Band | 61kD |
| Cell Pathway | integral component of membrane, |
| Tissue Specificity | Prostate, |
| Function | similarity:Belongs to the POTE family.,similarity:Contains 7 ANK repeats., |
| Background | similarity:Belongs to the POTE family.,similarity:Contains 7 ANK repeats., |
| matters needing attention | Avoid repeated freezing and thawing! |
| Usage suggestions | This product can be used in immunological reaction related experiments. For more information, please consult technical personnel. |



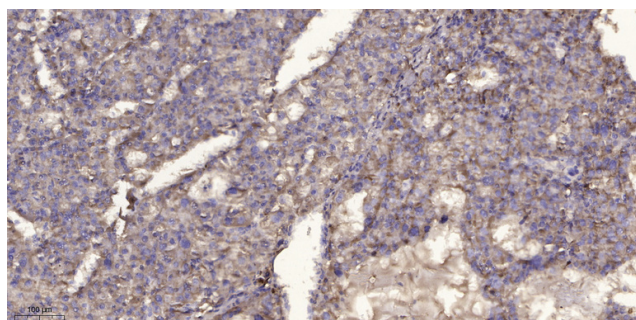
Products Images



Western Blot analysis of AD293 using POTE-14/22 Polyclonal Antibody diluted at 1:2000



Western blot analysis of lysates from MCF-7 cells, using A26C2/3 Antibody. The lane on the right is blocked with the synthesized peptide.



Immunohistochemical analysis of paraffin-embedded human liver cancer. 1, Antibody was diluted at 1:200(4° overnight). 2, Tris-EDTA, pH9.0 was used for antigen retrieval. 3, Secondary antibody was diluted at 1:200(room temperature, 45min).