



Myomesin-2 Polyclonal Antibody

Catalog No	YP-Ab-03163
Isotype	IgG
Reactivity	Human;Mouse;Monkey
Applications	WB;ELISA;IHC
Gene Name	MYOM2
Protein Name	Myomesin-2
Immunogen	The antiserum was produced against synthesized peptide derived from human MYOM2. AA range:612-661
Specificity	Myomesin-2 Polyclonal Antibody detects endogenous levels of Myomesin-2 protein.
Formulation	Liquid in PBS containing 50% glycerol, 0.5% BSA and 0.02% sodium azide.
Source	Polyclonal, Rabbit,IgG
Purification	The antibody was affinity-purified from rabbit antiserum by affinity-chromatography using epitope-specific immunogen.
Dilution	WB 1:500-2000;IHC-p 1:50-300; ELISA 2000-20000
Concentration	1 mg/ml
Purity	≥90%
Storage Stability	-20°C/1 year
Synonyms	MYOM2; Myomesin-2; 165 kDa connectin-associated protein; 165 kDa titin-associated protein; M-protein; Myomesin family member 2
Observed Band	165kD
Cell Pathway	Cytoplasm, myofibril, sarcomere, M line .
Tissue Specificity	PNS,Skeletal muscle,
Function	function:Major component of the vertebrate myofibrillar M band. Binds myosin, titin, and light meromyosin. This binding is dose dependent.,similarity:Contains 5 fibronectin type-III domains.,similarity:Contains 5 Ig-like C2-type (immunoglobulin-like) domains.,subunit:Interacts with TTN/titin.,
Background	The giant protein titin, together with its associated proteins, interconnects the major structure of sarcomeres, the M bands and Z discs. The C-terminal end of the titin string extends into the M line, where it binds tightly to M-band constituents of apparent molecular masses of 190 kD and 165 kD. The predicted MYOM2 protein contains 1,465 amino acids. Like MYOM1, MYOM2 has a unique N-terminal domain followed by 12 repeat domains with strong homology to either fibronectin type III or immunoglobulin C2 domains. Protein sequence comparisons suggested that the MYOM2 protein and bovine M protein are identical. [provided by RefSeq, Jul 2008],

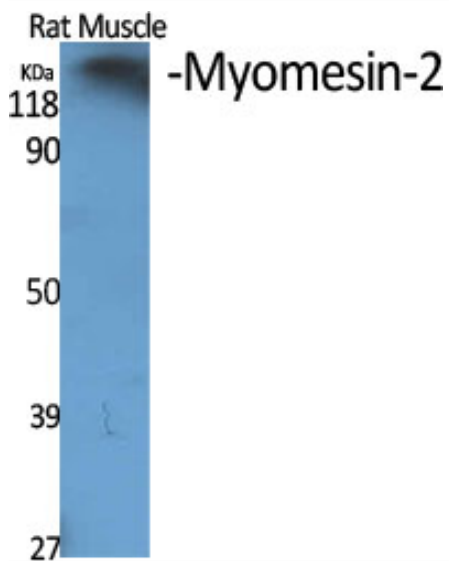
**matters needing attention**

Avoid repeated freezing and thawing!

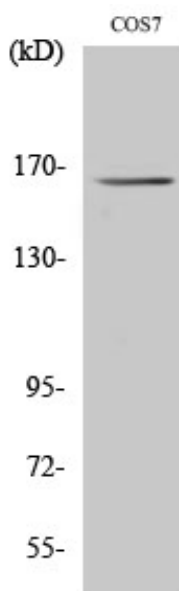
Usage suggestions

This product can be used in immunological reaction related experiments. For more information, please consult technical personnel.

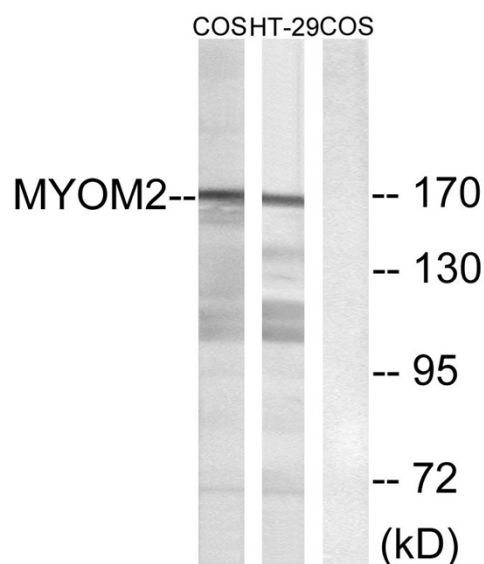
Products Images



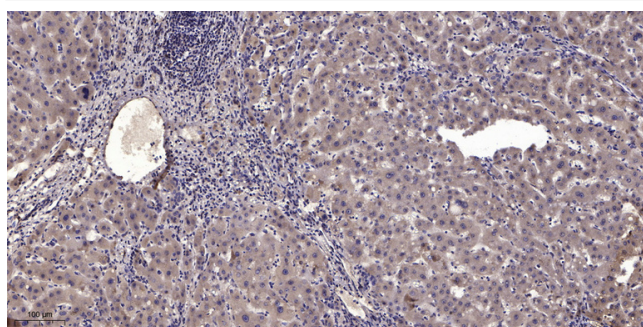
Western Blot analysis of various cells using Myomesin-2 Polyclonal Antibody diluted at 1:500



Western Blot analysis of HT29 cells using Myomesin-2 Polyclonal Antibody diluted at 1:500



Western blot analysis of lysates from COS7 and HT-29 cells, using MYOM2 Antibody. The lane on the right is blocked with the synthesized peptide.



Immunohistochemical analysis of paraffin-embedded human liver cancer. 1, Antibody was diluted at 1:200(4° overnight). 2, Tris-EDTA, pH9.0 was used for antigen retrieval. 3, Secondary antibody was diluted at 1:200(room temperature, 45min).