

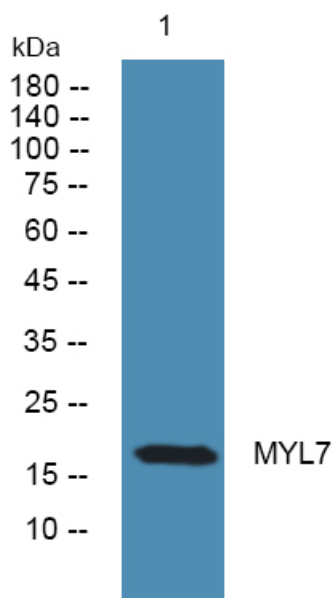


# MYL7 Polyclonal Antibody

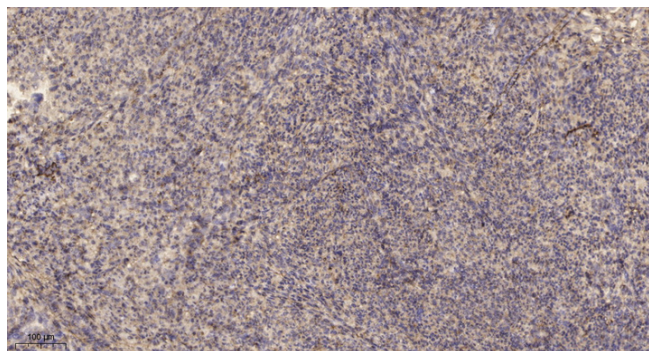
<b>Catalog No</b>	YP-Ab-03160
<b>Isotype</b>	IgG
<b>Reactivity</b>	Human;Mouse;Rat;Monkey
<b>Applications</b>	WB;IHC
<b>Gene Name</b>	MYL7
<b>Protein Name</b>	Myosin regulatory light chain 2 atrial isoform
<b>Immunogen</b>	The antiserum was produced against synthesized peptide derived from human MYL7. AA range:111-160
<b>Specificity</b>	MYL7 Polyclonal Antibody detects endogenous levels of MYL7 protein.
<b>Formulation</b>	Liquid in PBS containing 50% glycerol, 0.5% BSA and 0.02% sodium azide.
<b>Source</b>	Polyclonal, Rabbit,IgG
<b>Purification</b>	The antibody was affinity-purified from rabbit antiserum by affinity-chromatography using epitope-specific immunogen.
<b>Dilution</b>	WB 1:500-2000;IHC-p 1:50-300
<b>Concentration</b>	1 mg/ml
<b>Purity</b>	≥90%
<b>Storage Stability</b>	-20°C/1 year
<b>Synonyms</b>	MYL7; MYL2A; MYLC2A; Myosin regulatory light chain 2; atrial isoform; MLC-2a; MLC2a; Myosin light chain 2a; Myosin regulatory light chain 7
<b>Observed Band</b>	18kD
<b>Cell Pathway</b>	cytosol,myosin complex,A band,dendritic spine,
<b>Tissue Specificity</b>	Predominantly expressed in adult atrial muscle.
<b>Function</b>	miscellaneous:This chain binds calcium.,similarity:Contains 3 EF-hand domains.,subunit:Myosin is an hexamer of 2 heavy chains and 4 light chains.,tissue specificity:Predominantly expressed in adult atrial muscle.,
<b>Background</b>	miscellaneous:This chain binds calcium.,similarity:Contains 3 EF-hand domains.,subunit:Myosin is an hexamer of 2 heavy chains and 4 light chains.,tissue specificity:Predominantly expressed in adult atrial muscle.,
<b>matters needing attention</b>	Avoid repeated freezing and thawing!
<b>Usage suggestions</b>	This product can be used in immunological reaction related experiments. For more information, please consult technical personnel.



## Products Images



Western blot analysis of lysates from SH-SY5Y cells, primary antibody was diluted at 1:1000, 4° over night



Immunohistochemical analysis of paraffin-embedded human uterus. 1, Antibody was diluted at 1:200 (4° overnight). 2, Tris-EDTA, pH 9.0 was used for antigen retrieval. 3, Secondary antibody was diluted at 1:200 (room temperature, 45 min).