



# MAP-9 Polyclonal Antibody

<b>Catalog No</b>	YP-Ab-03149
<b>Isotype</b>	IgG
<b>Reactivity</b>	Human;Rat;Mouse;
<b>Applications</b>	WB;ELISA
<b>Gene Name</b>	MAP9
<b>Protein Name</b>	Microtubule-associated protein 9
<b>Immunogen</b>	The antiserum was produced against synthesized peptide derived from human MAP9. AA range:121-170
<b>Specificity</b>	MAP-9 Polyclonal Antibody detects endogenous levels of MAP-9 protein.
<b>Formulation</b>	Liquid in PBS containing 50% glycerol, 0.5% BSA and 0.02% sodium azide.
<b>Source</b>	Polyclonal, Rabbit,IgG
<b>Purification</b>	The antibody was affinity-purified from rabbit antiserum by affinity-chromatography using epitope-specific immunogen.
<b>Dilution</b>	Western Blot: 1/500 - 1/2000. ELISA: 1/40000. Not yet tested in other applications.
<b>Concentration</b>	1 mg/ml
<b>Purity</b>	≥90%
<b>Storage Stability</b>	-20°C/1 year
<b>Synonyms</b>	MAP9; ASAP; Microtubule-associated protein 9; Aster-associated protein
<b>Observed Band</b>	75kD
<b>Cell Pathway</b>	Cytoplasm . Cytoplasm, cytoskeleton . Cytoplasm, cytoskeleton, spindle . Localizes to microtubules in interphase, associates with the mitotic spindle during mitosis, localizes to the central body during cytokinesis.
<b>Tissue Specificity</b>	Amygdala,Bone marrow,Brain,
<b>Function</b>	developmental stage:Constitutively expressed during the cell cycle.,function:Involved in organization of the bipolar mitotic spindle. Required for bipolar spindle assembly, mitosis progression and cytokinesis. May act by stabilizing interphase microtubules.,PTM:Phosphorylated upon DNA damage, probably by ATM or ATR.,subcellular location:Localizes to microtubules in interphase, associates with the mitotic spindle during mitosis, localizes to the central body during cytokinesis.,subunit:Binds to purified microtubules via its C-terminus.,
<b>Background</b>	ASAP is a microtubule-associated protein required for spindle function, mitotic progression, and cytokinesis (Saffin et al., 2005 [PubMed 16049101]).[supplied by OMIM, Mar 2008],



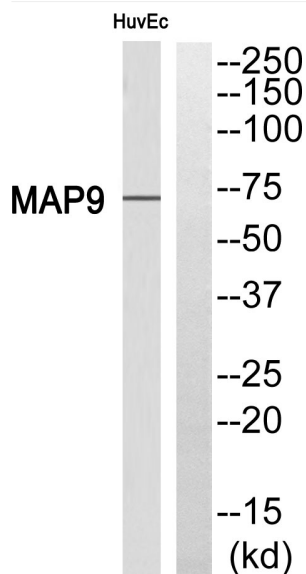
### matters needing attention

Avoid repeated freezing and thawing!

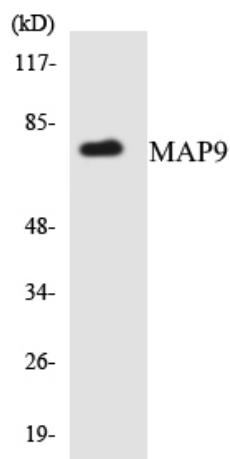
### Usage suggestions

This product can be used in immunological reaction related experiments. For more information, please consult technical personnel.

## Products Images



Western blot analysis of MAP9 Antibody. The lane on the right is blocked with the MAP9 peptide.



Western blot analysis of the lysates from HUVEC cells using MAP9 antibody.