



KIF13B Polyclonal Antibody

Catalog No	YP-Ab-03143
Isotype	IgG
Reactivity	Human;Rat;Mouse;
Applications	WB;IHC;IF;ELISA
Gene Name	KIF13B
Protein Name	Kinesin-like protein KIF13B
Immunogen	The antiserum was produced against synthesized peptide derived from human KIF13B. AA range:111-160
Specificity	KIF13B Polyclonal Antibody detects endogenous levels of KIF13B protein.
Formulation	Liquid in PBS containing 50% glycerol, 0.5% BSA and 0.02% sodium azide.
Source	Polyclonal, Rabbit,IgG
Purification	The antibody was affinity-purified from rabbit antiserum by affinity-chromatography using epitope-specific immunogen.
Dilution	WB: 1/500 - 1/2000. IHC: 1/100 - 1/300. ELISA: 1/5000.. IF 1:50-200
Concentration	1 mg/ml
Purity	≥90%
Storage Stability	-20°C/1 year
Synonyms	KIF13B; GAKIN; KIAA0639; Kinesin-like protein KIF13B; Kinesin-like protein GAKIN
Observed Band	202kD
Cell Pathway	Cytoplasm, cytoskeleton . Cell projection, axon . accumulates at the distal part of the microtubules in the tips of axons, but not of dendrites.
Tissue Specificity	Ubiquitous.
Function	function:May be involved in reorganization of the cortical cytoskeleton. May be functionally important for the intracellular trafficking of MAGUKs and associated protein complexes.,PTM:Phosphorylated upon DNA damage, probably by ATM or ATR.,similarity:Belongs to the kinesin-like protein family.,similarity:Contains 1 CAP-Gly domain.,similarity:Contains 1 FHA domain.,similarity:Contains 1 kinesin-motor domain.,subunit:Binds to DLG1 and DLG4.,tissue specificity:Ubiquitous.,
Background	function:May be involved in reorganization of the cortical cytoskeleton. May be functionally important for the intracellular trafficking of MAGUKs and associated protein complexes.,PTM:Phosphorylated upon DNA damage, probably by ATM or ATR.,similarity:Belongs to the kinesin-like protein family.,similarity:Contains 1 CAP-Gly domain.,similarity:Contains 1 FHA domain.,similarity:Contains 1 kinesin-motor domain.,subunit:Binds to DLG1 and DLG4.,tissue



specificity:Ubiquitous.,

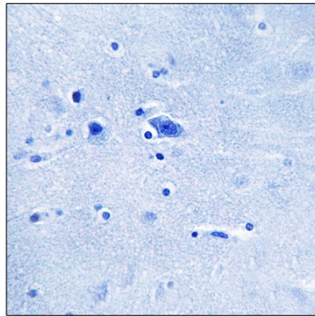
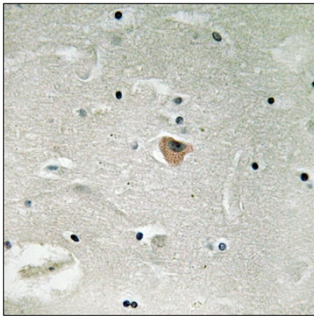
matters needing attention

Avoid repeated freezing and thawing!

Usage suggestions

This product can be used in immunological reaction related experiments. For more information, please consult technical personnel.

Products Images



Immunohistochemistry analysis of paraffin-embedded human brain, using KIF13B Antibody. The picture on the right is blocked with the synthesized peptide.