



# Keratin 37/38 Polyclonal Antibody

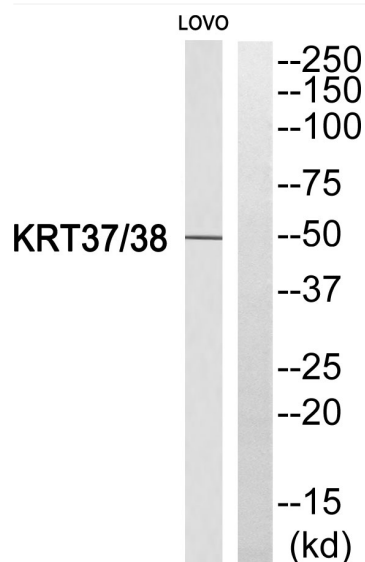
<b>Catalog No</b>	YP-Ab-03142
<b>Isotype</b>	IgG
<b>Reactivity</b>	Human;Rat;Mouse;
<b>Applications</b>	WB;ELISA;IHC
<b>Gene Name</b>	KRT37/KRT38
<b>Protein Name</b>	Keratin type I cuticular Ha7/Keratin type I cuticular Ha8
<b>Immunogen</b>	The antiserum was produced against synthesized peptide derived from human KRT37/38. AA range:201-250
<b>Specificity</b>	Keratin 37/38 Polyclonal Antibody detects endogenous levels of Keratin 37/38 protein.
<b>Formulation</b>	Liquid in PBS containing 50% glycerol, 0.5% BSA and 0.02% sodium azide.
<b>Source</b>	Polyclonal, Rabbit,IgG
<b>Purification</b>	The antibody was affinity-purified from rabbit antiserum by affinity-chromatography using epitope-specific immunogen.
<b>Dilution</b>	WB 1:500-2000;IHC-p 1:50-300; ELISA 2000-20000
<b>Concentration</b>	1 mg/ml
<b>Purity</b>	≥90%
<b>Storage Stability</b>	-20°C/1 year
<b>Synonyms</b>	KRT37; HHA7; HKA7; KRTHA7; Keratin; type I cuticular Ha7; Hair keratin, type I Ha7; Keratin-37; K37; KRT38; HHA8; HKA8; KRTHA8; Keratin, type I cuticular Ha8; Hair keratin, type I Ha8; Keratin-38; K38
<b>Observed Band</b>	50kD
<b>Cell Pathway</b>	intermediate filament,extracellular exosome,
<b>Tissue Specificity</b>	Scalp,
<b>Function</b>	miscellaneous:There are two types of hair/microfibrillar keratin, I (acidic) and II (neutral to basic).,similarity:Belongs to the intermediate filament family.,
<b>Background</b>	The protein encoded by this gene is a member of the keratin gene family. As a type I hair keratin, it is an acidic protein which heterodimerizes with type II keratins to form hair and nails. The type I hair keratins are clustered in a region of chromosome 17q12-q21 and have the same direction of transcription. [provided by RefSeq, Jul 2008],
<b>matters needing attention</b>	Avoid repeated freezing and thawing!



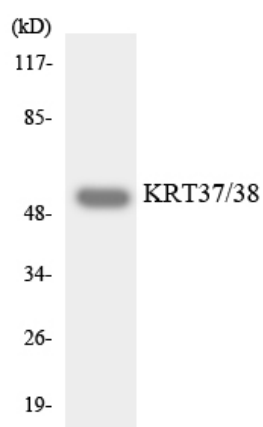
## Usage suggestions

This product can be used in immunological reaction related experiments. For more information, please consult technical personnel.

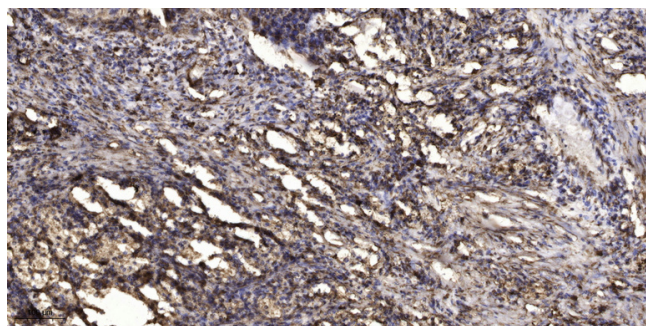
## Products Images



Western blot analysis of KRT37/38 Antibody. The lane on the right is blocked with the KRT37/38 peptide.



Western blot analysis of the lysates from HepG2 cells using KRT37/38 antibody.



Immunohistochemical analysis of paraffin-embedded human Squamous cell carcinoma of lung. 1, Antibody was diluted at 1:200(4° overnight). 2, Tris-EDTA,pH9.0 was used for antigen retrieval. 3,Secondary antibody was diluted at 1:200(room temperature, 45min).