

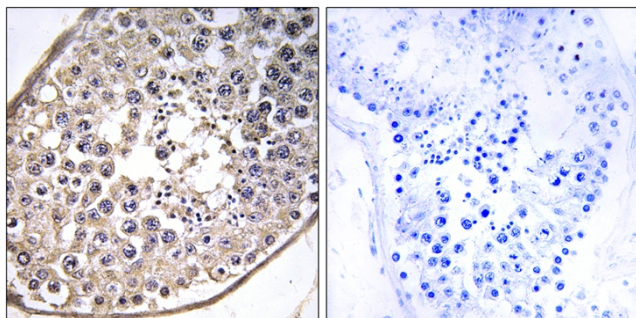


Dynein LC 4 Polyclonal Antibody

Catalog No	YP-Ab-03132
Isotype	IgG
Reactivity	Human;Mouse
Applications	IHC;IF;ELISA
Gene Name	DNAL4
Protein Name	Dynein light chain 4 axonemal
Immunogen	The antiserum was produced against synthesized peptide derived from human DNAL4. AA range:1-50
Specificity	Dynein LC 4 Polyclonal Antibody detects endogenous levels of Dynein LC 4 protein.
Formulation	Liquid in PBS containing 50% glycerol, 0.5% BSA and 0.02% sodium azide.
Source	Polyclonal, Rabbit,IgG
Purification	The antibody was affinity-purified from rabbit antiserum by affinity-chromatography using epitope-specific immunogen.
Dilution	IHC: 1/100 - 1/300. ELISA: 1/40000.. IF 1:50-200
Concentration	1 mg/ml
Purity	≥90%
Storage Stability	-20°C/1 year
Synonyms	DNAL4; Dynein light chain 4; axonemal
Observed Band	
Cell Pathway	Cytoplasm, cytoskeleton, cilium axoneme .
Tissue Specificity	Lung,Skin,Testis,
Function	function:Force generating protein of respiratory cilia. Produces force towards the minus ends of microtubules. Dynein has ATPase activity.,similarity:Belongs to the dynein light chain family.,subunit:Consists of at least two heavy chains and a number of intermediate and light chains.,
Background	This gene encodes an axonemal dynein light chain which functions as a component of the outer dynein arms complex. This complex acts as the molecular motor that provides the force to move cilia in an ATP-dependent manner. The encoded protein is expressed in tissues with motile cilia or flagella and may be involved in the movement of sperm flagella. [provided by RefSeq, Dec 2014],
matters needing attention	Avoid repeated freezing and thawing!

Usage suggestions

This product can be used in immunological reaction related experiments. For more information, please consult technical personnel.

Products Images

Immunohistochemistry analysis of paraffin-embedded human testis tissue, using DNAL4 Antibody. The picture on the right is blocked with the synthesized peptide.