



Dynein LC 2 Polyclonal Antibody

Catalog No	YP-Ab-03130
Isotype	IgG
Reactivity	Human;Mouse;Rat
Applications	IHC;IF;ELISA
Gene Name	DYNLL2
Protein Name	Dynein light chain 2 cytoplasmic
Immunogen	The antiserum was produced against synthesized peptide derived from human DYNLL2. AA range:1-50
Specificity	Dynein LC 2 Polyclonal Antibody detects endogenous levels of Dynein LC 2 protein.
Formulation	Liquid in PBS containing 50% glycerol, 0.5% BSA and 0.02% sodium azide.
Source	Polyclonal, Rabbit,IgG
Purification	The antibody was affinity-purified from rabbit antiserum by affinity-chromatography using epitope-specific immunogen.
Dilution	IHC: 1/100 - 1/300. ELISA: 1/40000.. IF 1:50-200
Concentration	1 mg/ml
Purity	≥90%
Storage Stability	-20°C/1 year
Synonyms	DYNLL2; DLC2; Dynein light chain 2; cytoplasmic; 8 kDa dynein light chain b; DLC8b; Dynein light chain LC8-type 2
Observed Band	
Cell Pathway	Cytoplasm, cytoskeleton .
Tissue Specificity	Lung,
Function	function:May be involved in some aspects of dynein-related intracellular transport and motility. May play a role in changing or maintaining the spatial distribution of cytoskeletal structures.,similarity:Belongs to the dynein light chain family.,subunit:Homodimer. Interacts with BMF. Component of the myosin V motor complex as well as the microtubular dynein motor complex. Interacts with rabies virus phosphoprotein.,
Background	function:May be involved in some aspects of dynein-related intracellular transport and motility. May play a role in changing or maintaining the spatial distribution of cytoskeletal structures.,similarity:Belongs to the dynein light chain family.,subunit:Homodimer. Interacts with BMF. Component of the myosin V motor complex as well as the microtubular dynein motor complex. Interacts with rabies virus phosphoprotein.,



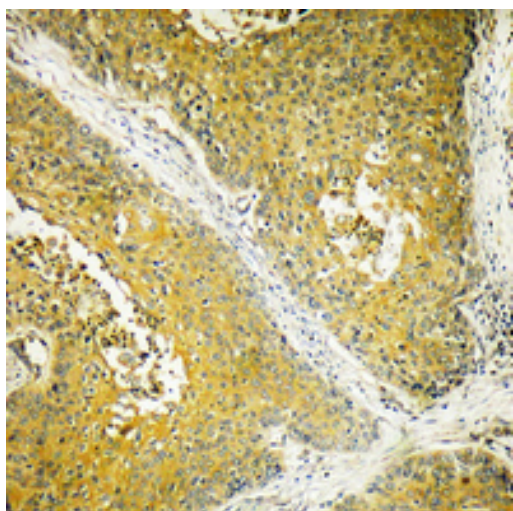
matters needing attention

Avoid repeated freezing and thawing!

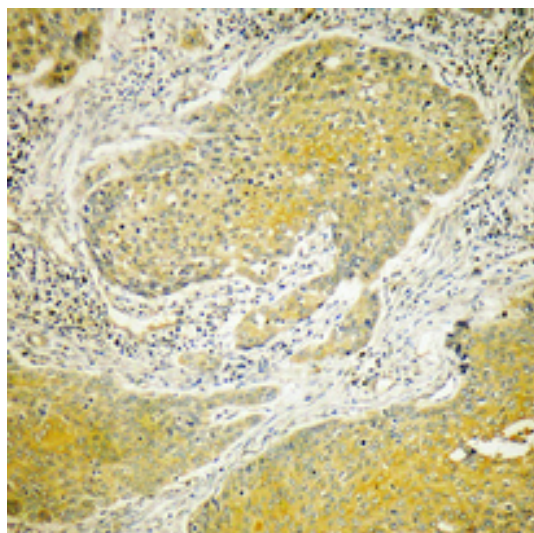
Usage suggestions

This product can be used in immunological reaction related experiments. For more information, please consult technical personnel.

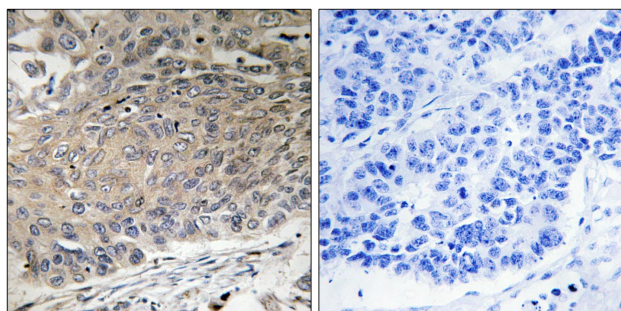
Products Images



Immunohistochemical analysis of paraffin-embedded Human breast cancer. Antibody was diluted at 1:100(4° overnight). High-pressure and temperature Tris-EDTA, pH8.0 was used for antigen retrieval.



Immunohistochemical analysis of paraffin-embedded Human breast cancer. Antibody was diluted at 1:100(4° overnight). High-pressure and temperature Tris-EDTA, pH8.0 was used for antigen retrieval.



Immunohistochemistry analysis of paraffin-embedded human lung carcinoma tissue, using DYNLL2 Antibody. The picture on the right is blocked with the synthesized peptide.