



Dynein IC2 Polyclonal Antibody

Catalog No	YP-Ab-03128
Isotype	IgG
Reactivity	Human;Mouse;Rat;Chicken
Applications	WB;ELISA
Gene Name	DNAI2
Protein Name	Dynein intermediate chain 2 axonemal
Immunogen	The antiserum was produced against synthesized peptide derived from human DNAI2. AA range:71-120
Specificity	Dynein IC2 Polyclonal Antibody detects endogenous levels of Dynein IC2 protein.
Formulation	Liquid in PBS containing 50% glycerol, 0.5% BSA and 0.02% sodium azide.
Source	Polyclonal, Rabbit,IgG
Purification	The antibody was affinity-purified from rabbit antiserum by affinity-chromatography using epitope-specific immunogen.
Dilution	Western Blot: 1/500 - 1/2000. ELISA: 1/10000. Not yet tested in other applications.
Concentration	1 mg/ml
Purity	≥90%
Storage Stability	-20°C/1 year
Synonyms	DNAI2; Dynein intermediate chain 2; axonemal; Axonemal dynein intermediate chain 2
Observed Band	70kD
Cell Pathway	Cytoplasm, cytoskeleton, cilium axoneme . Dynein axonemal particle . Located in the proximal region of respiratory cilia. .
Tissue Specificity	Highly expressed in trachea and testis. Expressed in respiratory ciliated cells (at protein level) (PubMed:33139725).
Function	disease:Defects in DNAI2 are the cause of primary ciliary dyskinesia type 9 (CILD9) [MIM:612444]. CILD is an autosomal recessive disorder characterized by axonemal abnormalities of motile cilia. Respiratory infections leading to chronic inflammation and bronchiectasis are recurrent, due to defects in the respiratory cilia; reduced fertility is often observed in male patients due to abnormalities of sperm tails. Half of the patients exhibit situs inversus, due to dysfunction of monocilia at the embryonic node and randomization of left-right body asymmetry. Primary ciliary dyskinesia associated with situs inversus is referred to as Kartagener syndrome.,function:Part of the dynein complex of respiratory cilia.,sequence caution:Intron retention.,similarity:Belongs to the dynein intermediate chain family.,similarity:Contains 5 WD repeats.,subunit:Consists of at least two heavy chains and a nu



Background

The protein encoded by this gene belongs to the dynein intermediate chain family, and is part of the dynein complex of respiratory cilia and sperm flagella. Mutations in this gene are associated with primary ciliary dyskinesia type 9. Alternatively spliced transcript variants encoding different isoforms have been noted for this gene. [provided by RefSeq, Mar 2010],

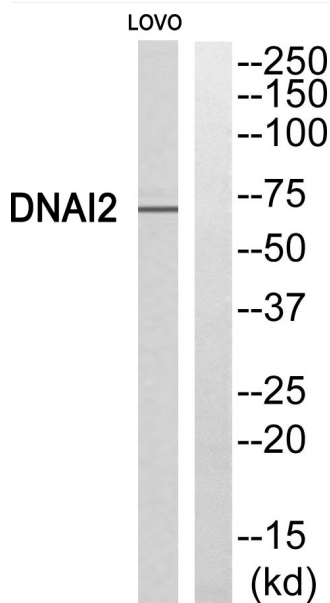
matters needing attention

Avoid repeated freezing and thawing!

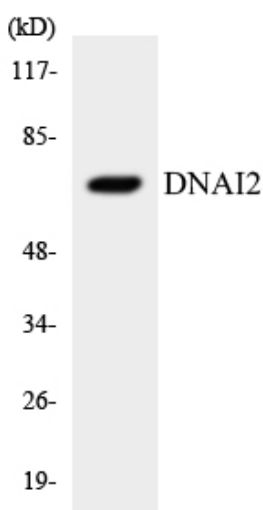
Usage suggestions

This product can be used in immunological reaction related experiments. For more information, please consult technical personnel.

Products Images



Western blot analysis of DNAI2 Antibody. The lane on the right is blocked with the DNAI2 peptide.



Western blot analysis of the lysates from RAW264.7 cells using DNAI2 antibody.