

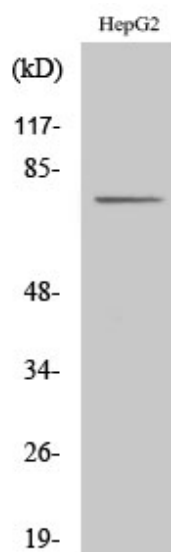


# CLIP4 Polyclonal Antibody

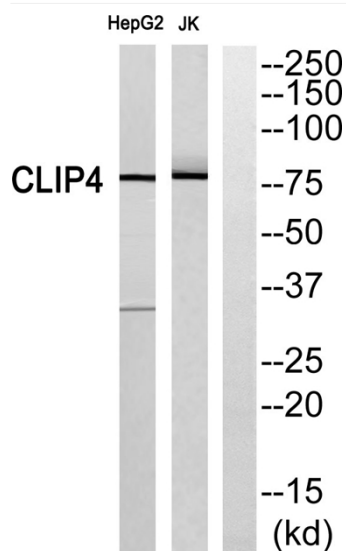
<b>Catalog No</b>	YP-Ab-03104
<b>Isotype</b>	IgG
<b>Reactivity</b>	Human;Rat;Mouse;
<b>Applications</b>	WB;ELISA
<b>Gene Name</b>	CLIP4
<b>Protein Name</b>	CAP-Gly domain-containing linker protein 4
<b>Immunogen</b>	The antiserum was produced against synthesized peptide derived from human CLIP4. AA range:321-370
<b>Specificity</b>	CLIP4 Polyclonal Antibody detects endogenous levels of CLIP4 protein.
<b>Formulation</b>	Liquid in PBS containing 50% glycerol, 0.5% BSA and 0.02% sodium azide.
<b>Source</b>	Polyclonal, Rabbit,IgG
<b>Purification</b>	The antibody was affinity-purified from rabbit antiserum by affinity-chromatography using epitope-specific immunogen.
<b>Dilution</b>	Western Blot: 1/500 - 1/2000. ELISA: 1/40000. Not yet tested in other applications.
<b>Concentration</b>	1 mg/ml
<b>Purity</b>	≥90%
<b>Storage Stability</b>	-20°C/1 year
<b>Synonyms</b>	CLIP4; RSNL2; CAP-Gly domain-containing linker protein 4; Restin-like protein 2
<b>Observed Band</b>	76kD
<b>Cell Pathway</b>	integral component of membrane,
<b>Tissue Specificity</b>	Amygdala,Brain,Lung,Prostate,Testis,
<b>Function</b>	similarity:Contains 3 ANK repeats.,similarity:Contains 3 CAP-Gly domains.,
<b>Background</b>	similarity:Contains 3 ANK repeats.,similarity:Contains 3 CAP-Gly domains.,
<b>matters needing attention</b>	Avoid repeated freezing and thawing!
<b>Usage suggestions</b>	This product can be used in immunological reaction related experiments. For more information, please consult technical personnel.



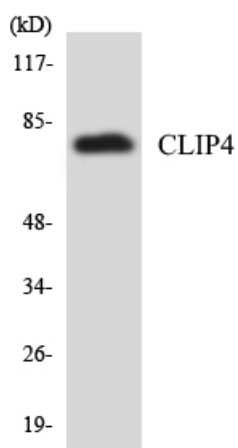
## Products Images



Western Blot analysis of various cells using CLIP4 Polyclonal Antibody



Western blot analysis of CLIP4 Antibody. The lane on the right is blocked with the CLIP4 peptide.



Western blot analysis of the lysates from HUVEC cells using CLIP4 antibody.