



# CLIP3 Polyclonal Antibody

<b>Catalog No</b>	YP-Ab-03103
<b>Isotype</b>	IgG
<b>Reactivity</b>	Human;Mouse;Rat
<b>Applications</b>	WB;IHC;IF;ELISA
<b>Gene Name</b>	CLIP3
<b>Protein Name</b>	CAP-Gly domain-containing linker protein 3
<b>Immunogen</b>	The antiserum was produced against synthesized peptide derived from human CLIP3. AA range:361-410
<b>Specificity</b>	CLIP3 Polyclonal Antibody detects endogenous levels of CLIP3 protein.
<b>Formulation</b>	Liquid in PBS containing 50% glycerol, 0.5% BSA and 0.02% sodium azide.
<b>Source</b>	Polyclonal, Rabbit,IgG
<b>Purification</b>	The antibody was affinity-purified from rabbit antiserum by affinity-chromatography using epitope-specific immunogen.
<b>Dilution</b>	Western Blot: 1/500 - 1/2000. Immunohistochemistry: 1/100 - 1/300. Immunofluorescence: 1/200 - 1/1000. ELISA: 1/40000. Not yet tested in other applications.
<b>Concentration</b>	1 mg/ml
<b>Purity</b>	≥90%
<b>Storage Stability</b>	-20°C/1 year
<b>Synonyms</b>	CLIP3; CLIPR59; CAP-Gly domain-containing linker protein 3; Cytoplasmic linker protein 170-related 59 kDa protein; CLIP-170-related 59 kDa protein; CLIPR-59
<b>Observed Band</b>	60kD
<b>Cell Pathway</b>	Cell membrane ; Lipid-anchor . Cytoplasm . Golgi apparatus, Golgi stack . Localized to Golgi stacks as well as on tubulovesicular elements juxtaposed to Golgi cisternae.
<b>Tissue Specificity</b>	Brain,Skin,Uterus,
<b>Function</b>	domain:Microtubule association is inhibited by the ANK repeats and the Golgi localization region (GoLD).,function:Functions as a cytoplasmic linker protein. Involved in TGN-endosome dynamics.,miscellaneous:The N-terminal half is dispensable for proper Golgi targeting, whereas the GoLD region is required.,similarity:Contains 2 CAP-Gly domains.,similarity:Contains 3 ANK repeats.,subcellular location:Localized to Golgi stacks as well as on tubulovesicular elements juxtaposed to Golgi cisternae.,subunit:Homodimer.,
<b>Background</b>	This gene encodes a member of the cytoplasmic linker protein 170 family. Members of this protein family contain a cytoskeleton-associated protein glycine-rich domain and mediate the interaction of microtubules with cellular organelles. The encoded protein plays a role in T cell apoptosis by facilitating the



association of tubulin and the lipid raft ganglioside GD3. The encoded protein also functions as a scaffold protein mediating membrane localization of phosphorylated protein kinase B. Alternatively spliced transcript variants have been observed for this gene. [provided by RefSeq, Dec 2010],

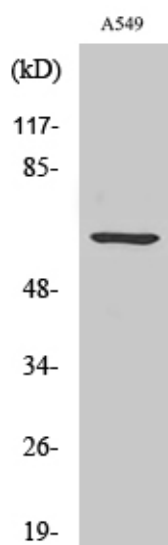
#### matters needing attention

Avoid repeated freezing and thawing!

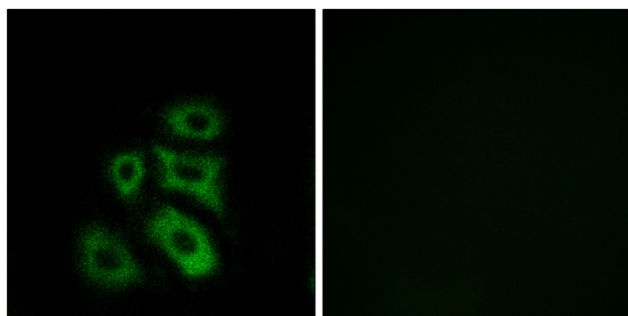
#### Usage suggestions

This product can be used in immunological reaction related experiments. For more information, please consult technical personnel.

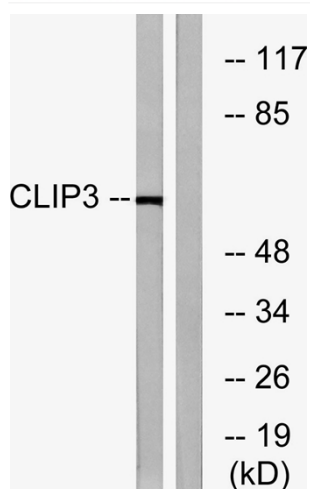
### Products Images



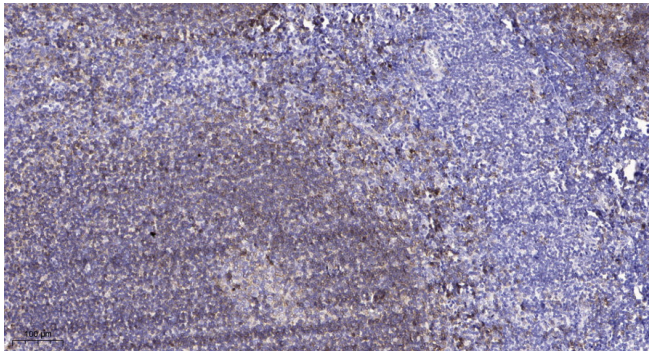
Western Blot analysis of various cells using CLIP3 Polyclonal Antibody



Immunofluorescence analysis of A549 cells, using CLIP3 Antibody. The picture on the right is blocked with the synthesized peptide.



Western blot analysis of lysates from A549 cells, using CLIP3 Antibody. The lane on the right is blocked with the synthesized peptide.



Immunohistochemical analysis of paraffin-embedded human tonsil. 1, Antibody was diluted at 1:200(4° overnight). 2, Tris-EDTA,pH9.0 was used for antigen retrieval. 3,Secondary antibody was diluted at 1:200(room temperature, 45min).