

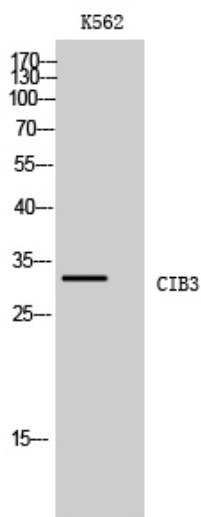


# CIB3 Polyclonal Antibody

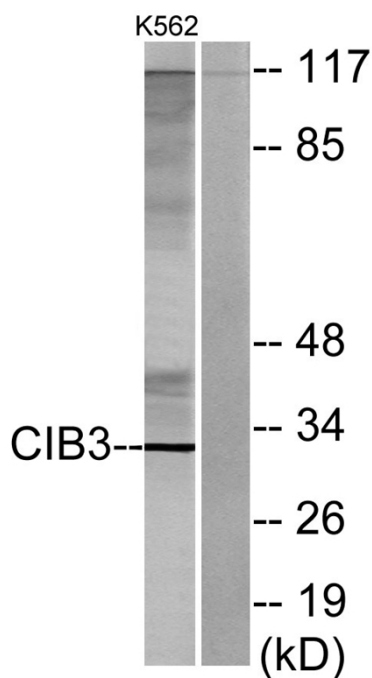
<b>Catalog No</b>	YP-Ab-03100
<b>Isotype</b>	IgG
<b>Reactivity</b>	Human;Mouse
<b>Applications</b>	WB;ELISA
<b>Gene Name</b>	CIB3
<b>Protein Name</b>	Calcium and integrin-binding family member 3
<b>Immunogen</b>	The antiserum was produced against synthesized peptide derived from human CIB3. AA range:138-187
<b>Specificity</b>	CIB3 Polyclonal Antibody detects endogenous levels of CIB3 protein.
<b>Formulation</b>	Liquid in PBS containing 50% glycerol, 0.5% BSA and 0.02% sodium azide.
<b>Source</b>	Polyclonal, Rabbit,IgG
<b>Purification</b>	The antibody was affinity-purified from rabbit antiserum by affinity-chromatography using epitope-specific immunogen.
<b>Dilution</b>	Western Blot: 1/500 - 1/2000. ELISA: 1/20000. Not yet tested in other applications.
<b>Concentration</b>	1 mg/ml
<b>Purity</b>	≥90%
<b>Storage Stability</b>	-20°C/1 year
<b>Synonyms</b>	CIB3; KIP3; Calcium and integrin-binding family member 3; Kinase-interacting protein 3; KIP 3
<b>Observed Band</b>	32kD
<b>Cell Pathway</b>	
<b>Tissue Specificity</b>	PCR rescued clones,
<b>Function</b>	similarity:Contains 3 EF-hand domains.,
<b>Background</b>	This gene product shares a high degree of sequence similarity with DNA-dependent protein kinase catalytic subunit-interacting protein 2 in human and mouse, and like them may bind the catalytic subunit of DNA-dependent protein kinases. The exact function of this gene is not known. Alternative splicing results in multiple transcript variants. [provided by RefSeq, Jul 2014],
<b>matters needing attention</b>	Avoid repeated freezing and thawing!
<b>Usage suggestions</b>	This product can be used in immunological reaction related experiments. For more information, please consult technical personnel.



## Products Images



Western Blot analysis of K562 cells using CIB3 Polyclonal Antibody



Western blot analysis of lysates from K562 cells, using CIB3 Antibody. The lane on the right is blocked with the synthesized peptide.