



CHP2 Polyclonal Antibody

Catalog No	YP-Ab-03098
Isotype	IgG
Reactivity	Human;Mouse;Rat
Applications	WB;ELISA
Gene Name	CHP2
Protein Name	Calcineurin B homologous protein 2
Immunogen	The antiserum was produced against synthesized peptide derived from human CHP2. AA range:101-150
Specificity	CHP2 Polyclonal Antibody detects endogenous levels of CHP2 protein.
Formulation	Liquid in PBS containing 50% glycerol, 0.5% BSA and 0.02% sodium azide.
Source	Polyclonal, Rabbit,IgG
Purification	The antibody was affinity-purified from rabbit antiserum by affinity-chromatography using epitope-specific immunogen.
Dilution	Western Blot: 1/500 - 1/2000. ELISA: 1/40000. Not yet tested in other applications.
Concentration	1 mg/ml
Purity	≥90%
Storage Stability	-20°C/1 year
Synonyms	CHP2; HCA520; Calcineurin B homologous protein 2; Hepatocellular carcinoma-associated antigen 520
Observed Band	22kD
Cell Pathway	Nucleus . Cytoplasm . Cell membrane . Predominantly localized in a juxtanuclear region. Colocalizes with SLC9A3 in the juxtanuclear region and at the plasma membrane (By similarity). Exported from the nucleus to the cytoplasm through a nuclear export signal (NES) pathway. May shuttle between nucleus and cytoplasm. .
Tissue Specificity	Expressed in malignantly transformed cells but not detected in normal tissues.
Function	function: Binds to and activates SLC9A1/NHE1 in a serum-independent manner, thus increasing pH and protecting cells from serum deprivation-induced death.,similarity: Contains 4 EF-hand domains.,subunit: Binds to SLC9A1/NHE1.,tissue specificity: Expressed in malignantly transformed cells but not detected in normal tissues.,
Background	This gene product is a small calcium-binding protein that regulates cell pH by controlling plasma membrane-type Na ⁺ /H ⁺ exchange activity. This protein shares sequence similarity with calcineurin B and can bind to and stimulate the protein phosphatase activity of calcineurin A (CnA) and functions in the calcineurin/NFAT (nuclear factor of activated T cells) signaling pathway. Another member of the



CHP subfamily, Calcineurin B homologous protein 1, is located on Chromosome 15 and is an inhibitor of calcineurin activity and has a genetic phenotype associated with Parkinson's Disease (OMIM:606988). This gene was initially identified as a tumor-associated antigen and was previously referred to as Hepatocellular carcinoma-associated antigen 520. [provided by RefSeq, Jul 2013],

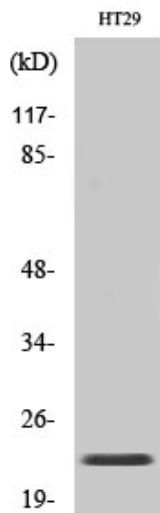
matters needing attention

Avoid repeated freezing and thawing!

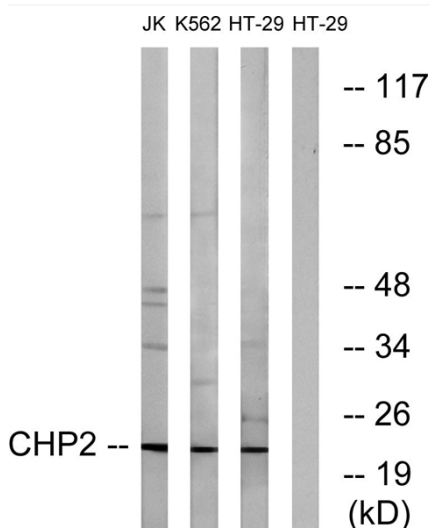
Usage suggestions

This product can be used in immunological reaction related experiments. For more information, please consult technical personnel.

Products Images



Western Blot analysis of various cells using CHP2 Polyclonal Antibody



Western blot analysis of lysates from HT-29, K562, and Jurkat cells, using CHP2 Antibody. The lane on the right is blocked with the synthesized peptide.