



CHP Polyclonal Antibody

Catalog No	YP-Ab-03097
Isotype	IgG
Reactivity	Human;Mouse;Rat
Applications	WB;ELISA
Gene Name	CHP1
Protein Name	Calcineurin B homologous protein 1
Immunogen	Synthesized peptide derived from the Internal region of human CHP.
Specificity	CHP Polyclonal Antibody detects endogenous levels of CHP protein.
Formulation	Liquid in PBS containing 50% glycerol, 0.5% BSA and 0.02% sodium azide.
Source	Polyclonal, Rabbit,IgG
Purification	The antibody was affinity-purified from rabbit antiserum by affinity-chromatography using epitope-specific immunogen.
Dilution	Western Blot: 1/500 - 1/2000. ELISA: 1/20000. Not yet tested in other applications.
Concentration	1 mg/ml
Purity	≥90%
Storage Stability	-20°C/1 year
Synonyms	CHP1; CHP; Calcineurin B homologous protein 1; Calcineurin B-like protein; Calcium-binding protein CHP; Calcium-binding protein p22; EF-hand calcium-binding domain-containing protein p22
Observed Band	24kD
Cell Pathway	Nucleus . Cytoplasm . Cytoplasm, cytoskeleton . Endomembrane system . Endoplasmic reticulum-Golgi intermediate compartment . Endoplasmic reticulum . Cell membrane . Membrane ; Lipid-anchor . Localizes in cytoplasmic compartments in dividing cells. Localizes in the nucleus in quiescent cells. Exported from the nucleus to the cytoplasm through a nuclear export signal (NES) and CRM1-dependent pathway. May shuttle between nucleus and cytoplasm. Localizes with the microtubule-organizing center (MTOC) and extends toward the periphery along microtubules. Associates with membranes of the early secretory pathway in a GAPDH-independent, N-myristoylation- and calcium-dependent manner. Colocalizes with the mitotic spindle microtubules. Colocalizes with GAPDH along microtubules. Colocalizes with SLC9A1
Tissue Specificity	Ubiquitously expressed. Has been found in fetal eye, lung, liver, muscle, heart, kidney, thymus and spleen.
Function	function:Required for constitutive membrane traffic. Inhibits GTPase-stimulated Na(+)/H(+) exchange. Also inhibits calcineurin phosphatase activity. Required for activity of SLC9A1/NHE1.,PTM:Both N-myristoylation and calcium-mediated conformational changes are essential for its function in exocytic



traffic.,PTM:Phosphorylated; decreased phosphorylation is associated with an increase in exchange activity. The phosphorylation state may regulate the binding to NHE1.,similarity:Contains 4 EF-hand domains.,subunit:Monomer (By similarity). Specifically binds to SLC9A1/NHE1 at a domain that is critical for growth factor stimulation of exchange activity.,tissue specificity:Ubiquitously expressed. Has been found in fetal eye, lung, liver, muscle, heart, kidney, thymus and spleen.,

Background

This gene encodes a phosphoprotein that binds to the Na⁺/H⁺ exchanger NHE1. This protein serves as an essential cofactor which supports the physiological activity of NHE family members and may play a role in the mitogenic regulation of NHE1. The protein shares similarity with calcineurin B and calmodulin and it is also known to be an endogenous inhibitor of calcineurin activity. [provided by RefSeq, Jul 2008],

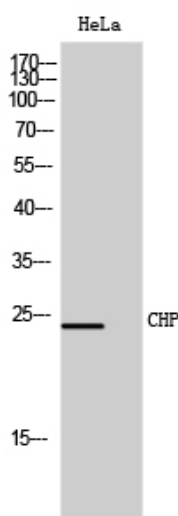
matters needing attention

Avoid repeated freezing and thawing!

Usage suggestions

This product can be used in immunological reaction related experiments. For more information, please consult technical personnel.

Products Images



Western Blot analysis of HeLa cells using CHP Polyclonal Antibody