



Calgizzarin Polyclonal Antibody

Catalog No	YP-Ab-03092
Isotype	IgG
Reactivity	Human;Mouse;Rat
Applications	IHC;IF;ELISA
Gene Name	S100A11
Protein Name	Protein S100-A11
Immunogen	Synthesized peptide derived from Calgizzarin . at AA range: 30-110
Specificity	Calgizzarin Polyclonal Antibody detects endogenous levels of Calgizzarin protein.
Formulation	Liquid in PBS containing 50% glycerol, 0.5% BSA and 0.02% sodium azide.
Source	Polyclonal, Rabbit,IgG
Purification	The antibody was affinity-purified from rabbit antiserum by affinity-chromatography using epitope-specific immunogen.
Dilution	IHC: 1/100 - 1/300. ELISA: 1/10000.. IF 1:50-200
Concentration	1 mg/ml
Purity	≥90%
Storage Stability	-20°C/1 year
Synonyms	S100A11; MLN70; S100C; Protein S100-A11; Calgizzarin; Metastatic lymph node gene 70 protein; MLN 70; Protein S100-C; S100 calcium-binding protein A11
Observed Band	
Cell Pathway	Cytoplasm . Nucleus .
Tissue Specificity	Brain,Epithelium,Keratinocyte,Lung,Mammary carcinoma,Placenta,Urina
Function	function:Facilitates the differentiation and the cornification of keratinocytes.,miscellaneous:Binds two calcium ions per molecule with an affinity similar to that of the S-100 proteins.,PTM:Phosphorylation at Thr-10 by PRKCA significantly suppresses homodimerization and promotes association with NCL/nucleolin which induces nuclear translocation.,similarity:Belongs to the S-100 family.,similarity:Contains 2 EF-hand domains.,subunit:Homodimer; disulfide-linked.,
Background	The protein encoded by this gene is a member of the S100 family of proteins containing 2 EF-hand calcium-binding motifs. S100 proteins are localized in the cytoplasm and/or nucleus of a wide range of cells, and involved in the regulation of a number of cellular processes such as cell cycle progression and differentiation. S100 genes include at least 13 members which are located as a cluster on chromosome 1q21. This protein may function in motility, invasion, and tubulin polymerization. Chromosomal rearrangements and altered expression of



this gene have been implicated in tumor metastasis. [provided by RefSeq, Jul 2008],

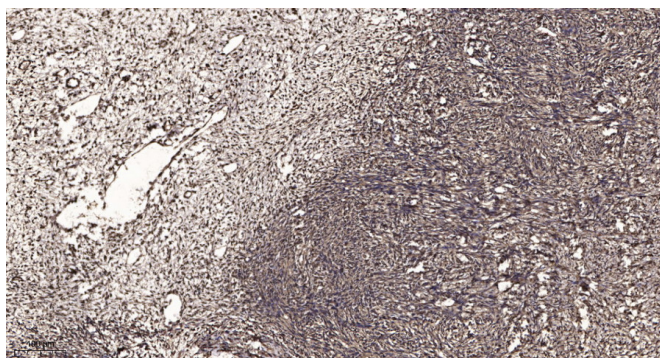
matters needing attention

Avoid repeated freezing and thawing!

Usage suggestions

This product can be used in immunological reaction related experiments. For more information, please consult technical personnel.

Products Images



Immunohistochemical analysis of paraffin-embedded human oophoroma. 1, Antibody was diluted at 1:200(4° overnight). 2, Tris-EDTA,pH9.0 was used for antigen retrieval. 3,Secondary antibody was diluted at 1:200(room temperature, 45min).