



Ameloblastin Polyclonal Antibody

Catalog No	YP-Ab-03085
Isotype	IgG
Reactivity	Human;Rat;Mouse;
Applications	WB;ELISA
Gene Name	AMBN
Protein Name	Ameloblastin
Immunogen	The antiserum was produced against synthesized peptide derived from human Ameloblastin. AA range:275-324
Specificity	Ameloblastin Polyclonal Antibody detects endogenous levels of Ameloblastin protein.
Formulation	Liquid in PBS containing 50% glycerol, 0.5% BSA and 0.02% sodium azide.
Source	Polyclonal, Rabbit,IgG
Purification	The antibody was affinity-purified from rabbit antiserum by affinity-chromatography using epitope-specific immunogen.
Dilution	Western Blot: 1/500 - 1/2000. ELISA: 1/10000. Not yet tested in other applications.
Concentration	1 mg/ml
Purity	≥90%
Storage Stability	-20°C/1 year
Synonyms	AMBN; Ameloblastin
Observed Band	48kD
Cell Pathway	Secreted, extracellular space, extracellular matrix.
Tissue Specificity	Ameloblast-specific. Located at the Tomes processes of secretory ameloblasts and in the sheath space between rod-interrod enamel.
Function	disease:Defects in AMBN are found in patients with ameloblastomas.,function:Involved in the mineralization and structural organization of enamel.,similarity:Belongs to the ameloblastin family.,tissue specificity:Ameloblast-specific. Located at the Tomes processes of secretory ameloblasts and in the sheath space between rod-interrod enamel.,
Background	This gene encodes the nonamelogenin enamel matrix protein ameloblastin. The encoded protein may be important in enamel matrix formation and mineralization. This gene is located in the calcium-binding phosphoprotein gene cluster on chromosome 4. Mutations in this gene may be associated with dentinogenesis imperfect and autosomal dominant amylogenesis imperfect. [provided by RefSeq, Aug 2011],

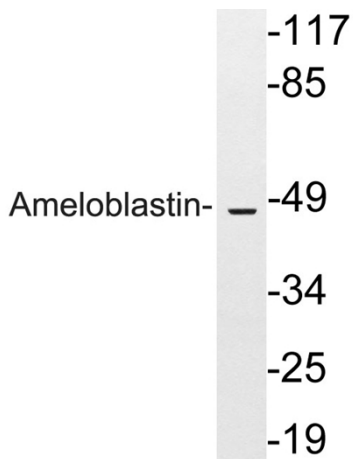
**matters needing attention**

Avoid repeated freezing and thawing!

Usage suggestions

This product can be used in immunological reaction related experiments. For more information, please consult technical personnel.

Products Images



Western blot analysis of lysates from HeLa cells, using Ameloblastin antibody.