



# Mox1 Polyclonal Antibody

<b>Catalog No</b>	YP-Ab-02895
<b>Isotype</b>	IgG
<b>Reactivity</b>	Human;Mouse;Rat
<b>Applications</b>	WB;IHC;IF;ELISA
<b>Gene Name</b>	NOX1 MOX1 NOH1
<b>Protein Name</b>	NADPH oxidase 1 (NOX-1) (EC 1.-.-.-) (Mitogenic oxidase 1) (MOX-1) (NADH/NADPH mitogenic oxidase subunit P65-MOX) (NOH-1)
<b>Immunogen</b>	Synthetic peptide from human protein at AA range: 210-260
<b>Specificity</b>	The antibody detects endogenous Mox1
<b>Formulation</b>	Liquid in PBS containing 50% glycerol, 0.5% BSA and 0.02% sodium azide.
<b>Source</b>	Polyclonal, Rabbit,IgG
<b>Purification</b>	The antibody was affinity-purified from rabbit antiserum by affinity-chromatography using epitope-specific immunogen.
<b>Dilution</b>	WB 1:500-2000,IHC-p 1:500-200, ELISA 1:10000-20000. IF 1:50-200
<b>Concentration</b>	1 mg/ml
<b>Purity</b>	≥90%
<b>Storage Stability</b>	-20°C/1 year
<b>Synonyms</b>	NADPH oxidase 1 (NOX-1;EC 1.-.-.-;Mitogenic oxidase 1;MOX-1;NADH/NADPH mitogenic oxidase subunit P65-MOX;NOH-1)
<b>Observed Band</b>	65kD
<b>Cell Pathway</b>	Cell projection, invadopodium membrane ; Multi-pass membrane protein . Cell membrane .
<b>Tissue Specificity</b>	NOH-1L is detected in colon, uterus, prostate, and colon carcinoma, but not in peripheral blood leukocytes. NOH-1S is detected only in colon and colon carcinoma cells.
<b>Function</b>	cofactor:FAD .,cofactor:NADP .,enzyme regulation:The oxidase activity is potentiated by NOXA1 and NOXO1.,function:NOH-1S is a voltage-gated proton channel that mediates the H(+) currents of resting phagocytes and other tissues. It participates in the regulation of cellular pH and is blocked by zinc. NOH-1L is a pyridine nucleotide-dependent oxidoreductase that generates superoxide and might conduct H(+) ions as part of its electron transport mechanism, whereas NOH-1S does not contain an electron transport chain.,similarity:Contains 1 FAD-binding FR-type domain.,similarity:Contains 1 ferric oxidoreductase domain.,subunit:NOX1, NOXA1, NOXO1, RAC1 and CYBA forms a functional multimeric complex supporting ROS production. Interacts with NOXA1 and NOXO1.,tissue specificity:NOH-1L is detected in colon, uterus, prostate, and colon carcinoma, but not in peripheral blood leukocytes. NOH-1S is dete

**Background**

This gene encodes a member of the NADPH oxidase family of enzymes responsible for the catalytic one-electron transfer of oxygen to generate superoxide or hydrogen peroxide. Alternatively spliced transcript variants encoding multiple isoforms have been observed for this gene. [provided by RefSeq, Nov 2012],

**matters needing attention**

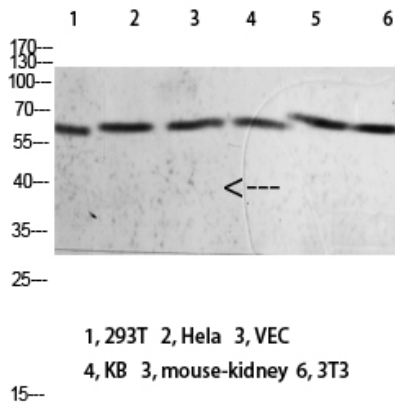
Avoid repeated freezing and thawing!

**Usage suggestions**

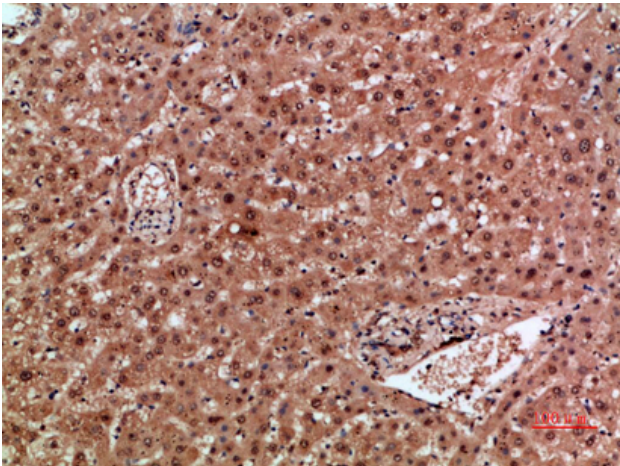
This product can be used in immunological reaction related experiments. For more information, please consult technical personnel.



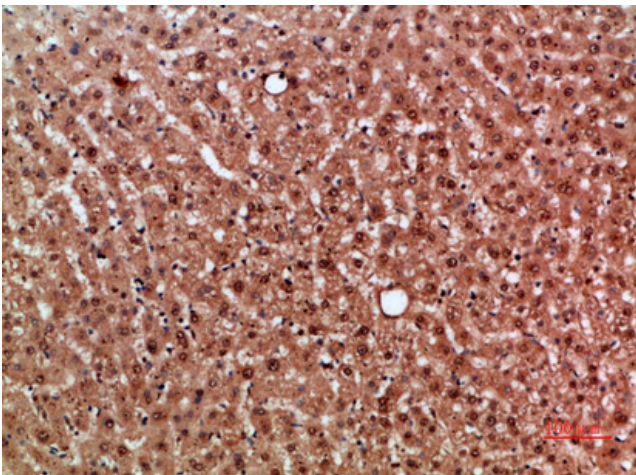
## Products Images



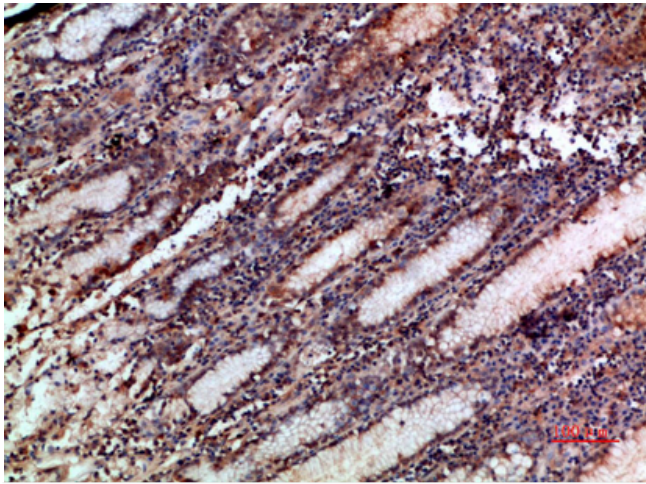
Western blot analysis of 293T Hela VEC KB mouse-kidney 3T3 lysate, antibody was diluted at 2000. Secondary antibody(catalog#:RS0002) was diluted at 1:20000



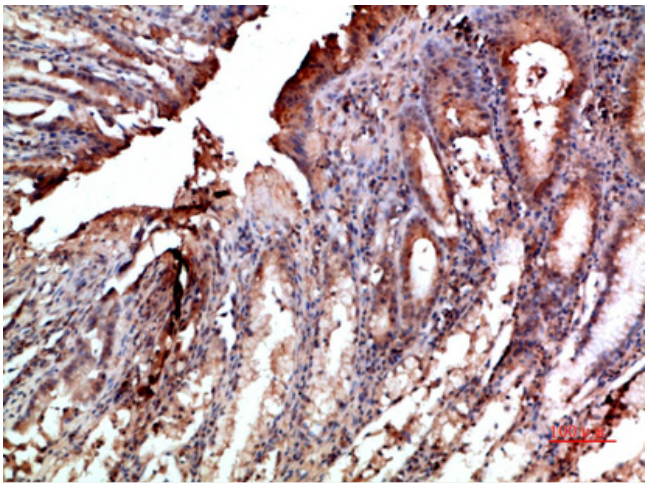
Immunohistochemical analysis of paraffin-embedded human-liver, antibody was diluted at 1:200



Immunohistochemical analysis of paraffin-embedded human-liver, antibody was diluted at 1:200



Immunohistochemical analysis of paraffin-embedded human-stomach, antibody was diluted at 1:200



Immunohistochemical analysis of paraffin-embedded human-stomach, antibody was diluted at 1:200