



HDC Polyclonal Antibody

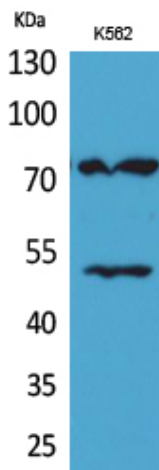
| | |
|----------------------------------|---|
| Catalog No | YP-Ab-02862 |
| Isotype | IgG |
| Reactivity | Human;Mouse;Rat |
| Applications | WB;IHC;IF;ELISA |
| Gene Name | HDC |
| Protein Name | Histidine decarboxylase |
| Immunogen | The antiserum was produced against synthesized peptide derived from the Internal region of human HDC. AA range:201-250 |
| Specificity | HDC Polyclonal Antibody detects endogenous levels of HDC protein. |
| Formulation | Liquid in PBS containing 50% glycerol, 0.5% BSA and 0.02% sodium azide. |
| Source | Polyclonal, Rabbit,IgG |
| Purification | The antibody was affinity-purified from rabbit antiserum by affinity-chromatography using epitope-specific immunogen. |
| Dilution | WB: 1/500 - 1/2000. IHC-p: 1:100-300 ELISA: 1/20000.. IF 1:50-200 |
| Concentration | 1 mg/ml |
| Purity | ≥90% |
| Storage Stability | -20°C/1 year |
| Synonyms | HDC; Histidine decarboxylase; HDC |
| Observed Band | 72kD |
| Cell Pathway | cytosol, |
| Tissue Specificity | Leukemia, |
| Function | catalytic activity:L-histidine = histamine + CO(2)..cofactor:Pyridoxal phosphate..pathway:Amine and polyamine biosynthesis; histamine biosynthesis; histamine from L-histidine: step 1/1..similarity:Belongs to the group II decarboxylase family..subunit:Homodimer., |
| Background | This gene encodes a member of the group II decarboxylase family and forms a homodimer that converts L-histidine to histamine in a pyridoxal phosphate dependent manner. Histamine regulates several physiologic processes, including neurotransmission, gastric acid secretion,inflammation, and smooth muscle tone.[provided by RefSeq, Aug 2010], |
| matters needing attention | Avoid repeated freezing and thawing! |



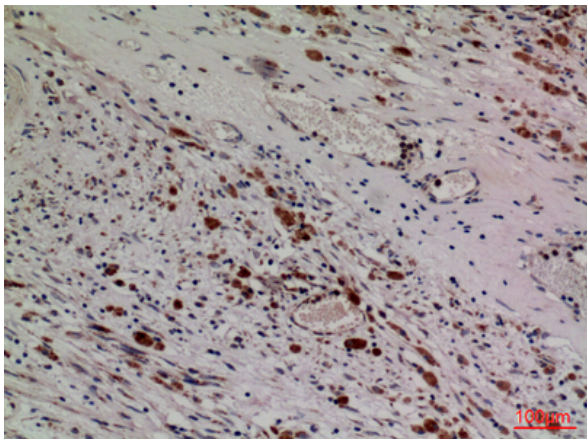
Usage suggestions

This product can be used in immunological reaction related experiments. For more information, please consult technical personnel.

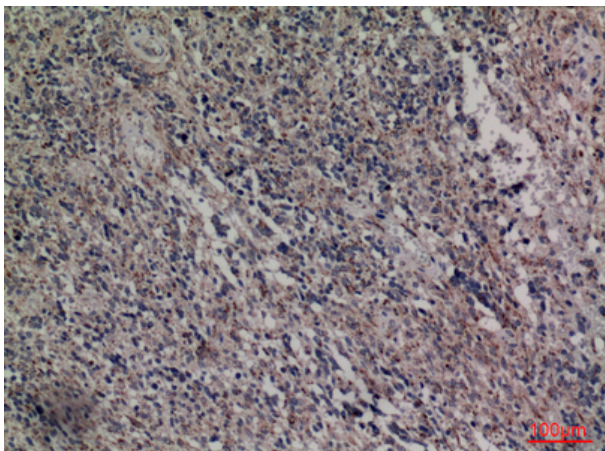
Products Images



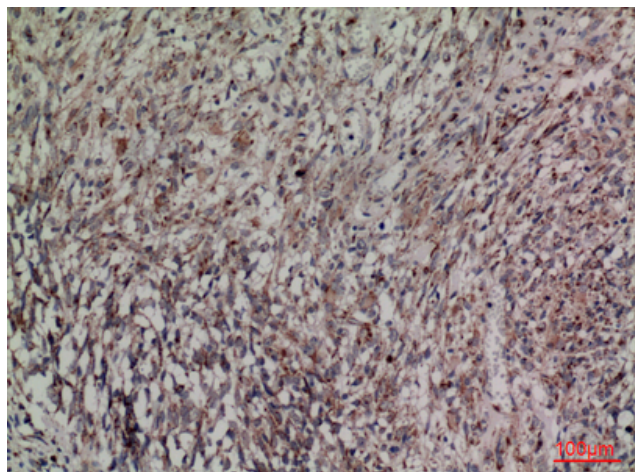
Western Blot analysis of K562 cells using HDC Polyclonal Antibody. Secondary antibody(catalog#:RS0002) was diluted at 1:20000



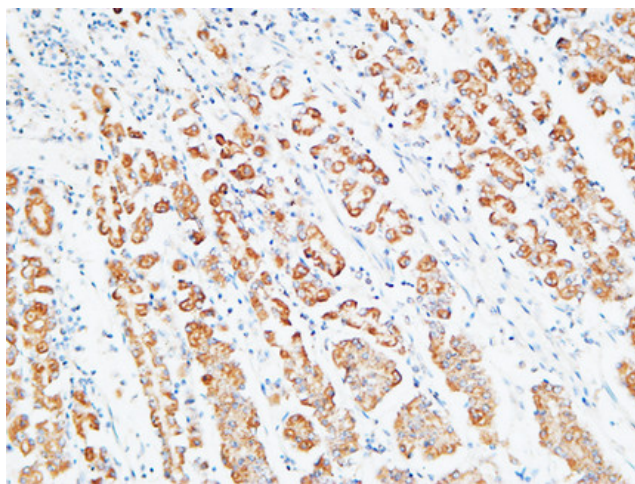
Immunohistochemical analysis of paraffin-embedded human-brain, antibody was diluted at 1:100



Immunohistochemical analysis of paraffin-embedded human-brain, antibody was diluted at 1:100



Immunohistochemical analysis of paraffin-embedded human-brain, antibody was diluted at 1:100



Immunohistochemical analysis of paraffin-embedded Human stomach. 1, Antibody was diluted at 1:200(4° overnight). 2, High-pressure and temperature EDTA, pH8.0 was used for antigen retrieval. 3, Secondary antibody was diluted at 1:200(room temperature, 30min).