



# ALDH1A1 Polyclonal Antibody

<b>Catalog No</b>	YP-Ab-02857
<b>Isotype</b>	IgG
<b>Reactivity</b>	Human;Rat;Mouse;
<b>Applications</b>	WB;IHC;IF;ELISA
<b>Gene Name</b>	ALDH1A1
<b>Protein Name</b>	Retinal dehydrogenase 1
<b>Immunogen</b>	The antiserum was produced against synthesized peptide derived from the N-terminal region of human ALDH1A1. AA range:21-70
<b>Specificity</b>	ALDH1A1 Polyclonal Antibody detects endogenous levels of ALDH1A1 protein.
<b>Formulation</b>	Liquid in PBS containing 50% glycerol, 0.5% BSA and 0.02% sodium azide.
<b>Source</b>	Polyclonal, Rabbit,IgG
<b>Purification</b>	The antibody was affinity-purified from rabbit antiserum by affinity-chromatography using epitope-specific immunogen.
<b>Dilution</b>	WB: 1/500 - 1/2000. IHC-p: 1:100-300 ELISA: 1/20000.. IF 1:50-200
<b>Concentration</b>	1 mg/ml
<b>Purity</b>	≥90%
<b>Storage Stability</b>	-20°C/1 year
<b>Synonyms</b>	ALDH1A1; ALDC; ALDH1; PUMB1; Retinal dehydrogenase 1; RALDH 1; RaIDH1; ALDH-E1; ALHDII; Aldehyde dehydrogenase family 1 member A1; Aldehyde dehydrogenase, cytosolic
<b>Observed Band</b>	55kD
<b>Cell Pathway</b>	Cytoplasm, cytosol . Cell projection, axon .
<b>Tissue Specificity</b>	Expressed by erythrocytes (at protein level).
<b>Function</b>	catalytic activity:Retinal + NAD(+) + H(2)O = retinoate + NADH.,function:Binds free retinal and cellular retinol-binding protein-bound retinal. Can convert/oxidize retinaldehyde to retinoic acid.,pathway:Cofactor metabolism; retinol metabolism.,similarity:Belongs to the aldehyde dehydrogenase family.,subunit:Homotetramer.,
<b>Background</b>	The protein encoded by this gene belongs to the aldehyde dehydrogenase family. Aldehyde dehydrogenase is the next enzyme after alcohol dehydrogenase in the major pathway of alcohol metabolism. There are two major aldehyde dehydrogenase isozymes in the liver, cytosolic and mitochondrial, which are encoded by distinct genes, and can be distinguished by their electrophoretic mobility, kinetic properties, and subcellular localization. This gene encodes the cytosolic isozyme. Studies in mice show that through its role in retinol metabolism,



this gene may also be involved in the regulation of the metabolic responses to high-fat diet. [provided by RefSeq, Mar 2011],

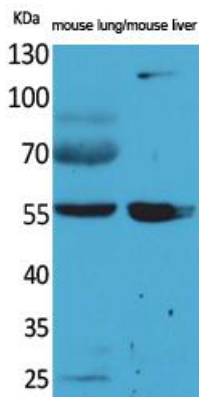
#### matters needing attention

Avoid repeated freezing and thawing!

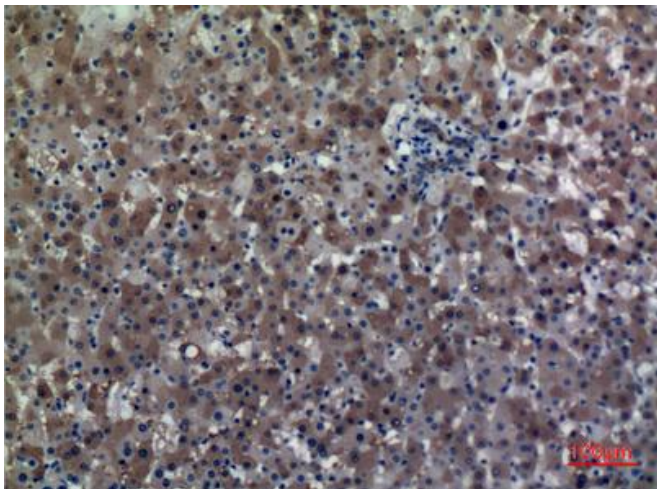
#### Usage suggestions

This product can be used in immunological reaction related experiments. For more information, please consult technical personnel.

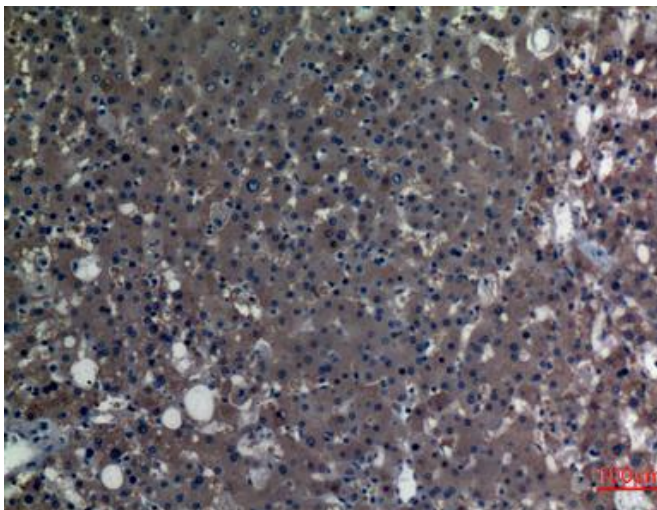
### Products Images



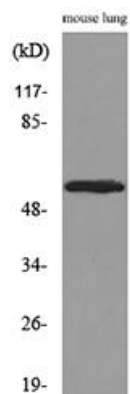
Western Blot analysis of mouse lung, mouse liver cells using ALDH1A1 Polyclonal Antibody. Secondary antibody(catalog#:RS0002) was diluted at 1:20000



Immunohistochemical analysis of paraffin-embedded human-liver, antibody was diluted at 1:100



Immunohistochemical analysis of paraffin-embedded human-liver, antibody was diluted at 1:100



Western blot analysis of lysate from mouse lung, using ALDH1A1 Antibody.