



# USP50 Polyclonal Antibody

<b>Catalog No</b>	YP-Ab-02842
<b>Isotype</b>	IgG
<b>Reactivity</b>	Human;Mouse
<b>Applications</b>	WB;IHC;IF;ELISA
<b>Gene Name</b>	USP50
<b>Protein Name</b>	Inactive ubiquitin carboxyl-terminal hydrolase 50
<b>Immunogen</b>	The antiserum was produced against synthesized peptide derived from human USP50. AA range:251-300
<b>Specificity</b>	USP50 Polyclonal Antibody detects endogenous levels of USP50 protein.
<b>Formulation</b>	Liquid in PBS containing 50% glycerol, 0.5% BSA and 0.02% sodium azide.
<b>Source</b>	Polyclonal, Rabbit,IgG
<b>Purification</b>	The antibody was affinity-purified from rabbit antiserum by affinity-chromatography using epitope-specific immunogen.
<b>Dilution</b>	WB: 1/500 - 1/2000. IHC: 1/100 - 1/300. ELISA: 1/20000.. IF 1:50-200
<b>Concentration</b>	1 mg/ml
<b>Purity</b>	≥90%
<b>Storage Stability</b>	-20°C/1 year
<b>Synonyms</b>	USP50; Inactive ubiquitin carboxyl-terminal hydrolase 50; Inactive ubiquitin-specific peptidase 50
<b>Observed Band</b>	38kD
<b>Cell Pathway</b>	
<b>Tissue Specificity</b>	Weakly expressed in a few tissues.
<b>Function</b>	caution:Although the active site residues are conserved, lacks the conserved Asp/Asn residue which is normally found 7-9 residues after the catalytic His.,function:Has no peptidase activity.,similarity:Belongs to the peptidase C19 family.,tissue specificity:Weakly expressed in a few tissues.,
<b>Background</b>	caution:Although the active site residues are conserved, lacks the conserved Asp/Asn residue which is normally found 7-9 residues after the catalytic His.,function:Has no peptidase activity.,similarity:Belongs to the peptidase C19 family.,tissue specificity:Weakly expressed in a few tissues.,
<b>matters needing attention</b>	Avoid repeated freezing and thawing!



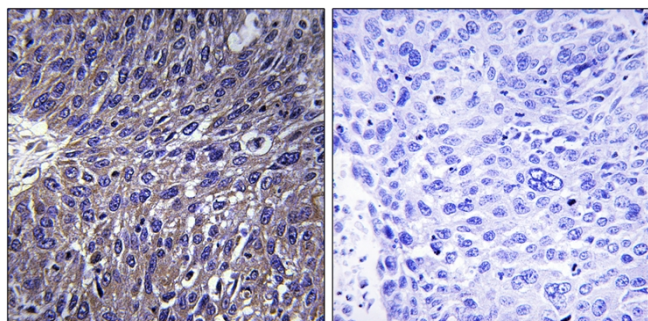
## Usage suggestions

This product can be used in immunological reaction related experiments. For more information, please consult technical personnel.

## Products Images



Western Blot analysis of various cells using USP50 Polyclonal Antibody. Secondary antibody(catalog#:RS0002) was diluted at 1:20000



Immunohistochemistry analysis of paraffin-embedded human lung carcinoma tissue, using USP50 Antibody. The picture on the right is blocked with the synthesized peptide.