

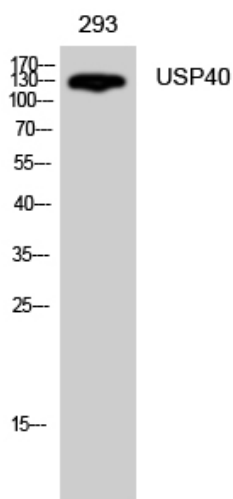


# USP40 Polyclonal Antibody

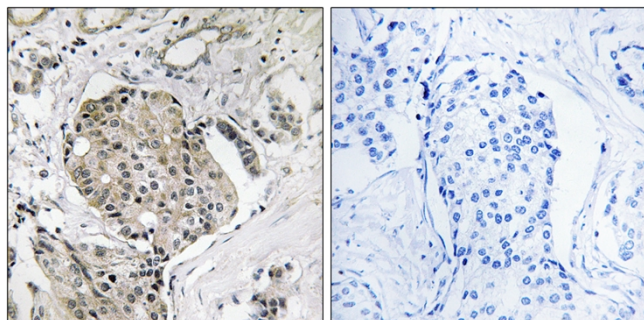
<b>Catalog No</b>	YP-Ab-02836
<b>Isotype</b>	IgG
<b>Reactivity</b>	Human;Rat;Mouse;
<b>Applications</b>	WB;IHC;IF;ELISA
<b>Gene Name</b>	USP40
<b>Protein Name</b>	Ubiquitin carboxyl-terminal hydrolase 40
<b>Immunogen</b>	The antiserum was produced against synthesized peptide derived from human USP40. AA range:1011-1060
<b>Specificity</b>	USP40 Polyclonal Antibody detects endogenous levels of USP40 protein.
<b>Formulation</b>	Liquid in PBS containing 50% glycerol, 0.5% BSA and 0.02% sodium azide.
<b>Source</b>	Polyclonal, Rabbit,IgG
<b>Purification</b>	The antibody was affinity-purified from rabbit antiserum by affinity-chromatography using epitope-specific immunogen.
<b>Dilution</b>	WB: 1/500 - 1/2000. IHC: 1/100 - 1/300. ELISA: 1/20000.. IF 1:50-200
<b>Concentration</b>	1 mg/ml
<b>Purity</b>	≥90%
<b>Storage Stability</b>	-20°C/1 year
<b>Synonyms</b>	USP40; Ubiquitin carboxyl-terminal hydrolase 40; Deubiquitinating enzyme 40; Ubiquitin thioesterase 40; Ubiquitin-specific-processing protease 40
<b>Observed Band</b>	140kD
<b>Cell Pathway</b>	nucleus,cytoplasm,
<b>Tissue Specificity</b>	Broadly expressed.
<b>Function</b>	catalytic activity:Ubiquitin C-terminal thioester + H(2)O = ubiquitin + a thiol.,function:May be catalytically inactive.,similarity:Belongs to the peptidase C19 family.,tissue specificity:Broadly expressed.,
<b>Background</b>	Modification of cellular proteins by ubiquitin is an essential regulatory mechanism controlled by the coordinated action of multiple ubiquitin-conjugating and deubiquitinating enzymes. USP40 belongs to a large family of cysteine proteases that function as deubiquitinating enzymes (Quesada et al., 2004 [PubMed 14715245]).[supplied by OMIM, Mar 2008],
<b>matters needing attention</b>	Avoid repeated freezing and thawing!

**Usage suggestions**

This product can be used in immunological reaction related experiments. For more information, please consult technical personnel.

**Products Images**

Western Blot analysis of 293 cells using USP40 Polyclonal Antibody diluted at 1:500. Secondary antibody(catalog#:RS0002) was diluted at 1:20000



Immunohistochemistry analysis of paraffin-embedded human breast carcinoma, using USP40 Antibody. The picture on the right is blocked with the synthesized peptide.