



USP38 Polyclonal Antibody

| | |
|---------------------------|--|
| Catalog No | YP-Ab-02835 |
| Isotype | IgG |
| Reactivity | Human;Rat;Mouse; |
| Applications | WB;ELISA |
| Gene Name | USP38 |
| Protein Name | Ubiquitin carboxyl-terminal hydrolase 38 |
| Immunogen | The antiserum was produced against synthesized peptide derived from human USP38. AA range:551-600 |
| Specificity | USP38 Polyclonal Antibody detects endogenous levels of USP38 protein. |
| Formulation | Liquid in PBS containing 50% glycerol, 0.5% BSA and 0.02% sodium azide. |
| Source | Polyclonal, Rabbit,IgG |
| Purification | The antibody was affinity-purified from rabbit antiserum by affinity-chromatography using epitope-specific immunogen. |
| Dilution | Western Blot: 1/500 - 1/2000. ELISA: 1/10000. Not yet tested in other applications. |
| Concentration | 1 mg/ml |
| Purity | ≥90% |
| Storage Stability | -20°C/1 year |
| Synonyms | USP38; KIAA1891; Ubiquitin carboxyl-terminal hydrolase 38; Deubiquitinating enzyme 38; HP43.8KD; Ubiquitin thioesterase 38; Ubiquitin-specific-processing protease 38 |
| Observed Band | 120kD |
| Cell Pathway | |
| Tissue Specificity | Highly expressed in skeletal muscle. Expressed in adrenal gland. |
| Function | catalytic activity:Ubiquitin C-terminal thioester + H(2)O = ubiquitin + a thiol.,sequence caution:The absence of the residues from Tyr-840 to Ser-871 is not the result of an alternative splicing.,similarity:Belongs to the peptidase C19 family.,tissue specificity:Highly expressed in skeletal muscle. Expressed in adrenal gland., |
| Background | catalytic activity:Ubiquitin C-terminal thioester + H(2)O = ubiquitin + a thiol.,sequence caution:The absence of the residues from Tyr-840 to Ser-871 is not the result of an alternative splicing.,similarity:Belongs to the peptidase C19 family.,tissue specificity:Highly expressed in skeletal muscle. Expressed in adrenal gland., |



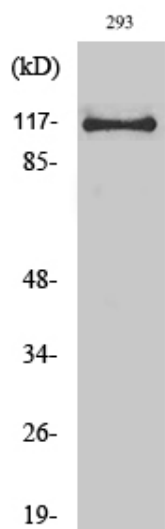
matters needing attention

Avoid repeated freezing and thawing!

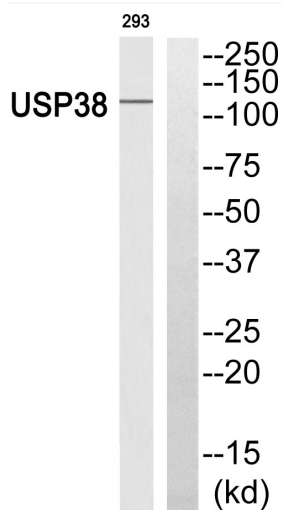
Usage suggestions

This product can be used in immunological reaction related experiments. For more information, please consult technical personnel.

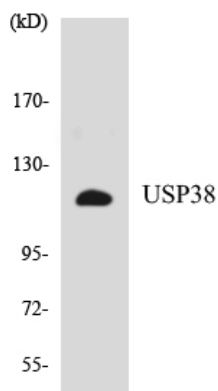
Products Images



Western Blot analysis of various cells using USP38 Polyclonal Antibody diluted at 1:1000. Secondary antibody(catalog#:RS0002) was diluted at 1:20000



Western blot analysis of USP38 Antibody. The lane on the right is blocked with the USP38 peptide.



Western blot analysis of the lysates from HepG2 cells using USP38 antibody.