

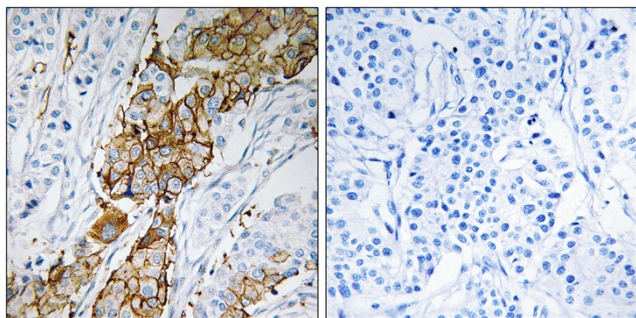


USP32 Polyclonal Antibody

| | |
|----------------------------------|---|
| Catalog No | YP-Ab-02833 |
| Isotype | IgG |
| Reactivity | Human;Mouse |
| Applications | IHC;IF;WB;ELISA |
| Gene Name | USP32 |
| Protein Name | Ubiquitin carboxyl-terminal hydrolase 32 |
| Immunogen | The antiserum was produced against synthesized peptide derived from human USP32. AA range:271-320 |
| Specificity | USP32 Polyclonal Antibody detects endogenous levels of USP32 protein. |
| Formulation | Liquid in PBS containing 50% glycerol, 0.5% BSA and 0.02% sodium azide. |
| Source | Polyclonal, Rabbit,IgG |
| Purification | The antibody was affinity-purified from rabbit antiserum by affinity-chromatography using epitope-specific immunogen. |
| Dilution | WB 1:500-2000 IHC: 1/100 - 1/300. ELISA: 1/40000.. IF 1:50-200 |
| Concentration | 1 mg/ml |
| Purity | ≥90% |
| Storage Stability | -20°C/1 year |
| Synonyms | USP32; USP10; Ubiquitin carboxyl-terminal hydrolase 32; Deubiquitinating enzyme 32; Renal carcinoma antigen NY-REN-60; Ubiquitin thioesterase 32; Ubiquitin-specific-processing protease 32 |
| Observed Band | 180kD |
| Cell Pathway | Membrane ; Lipid-anchor . Golgi apparatus . |
| Tissue Specificity | Brain,Epithelium,Peripheral Nervous System,Skin,Testis,Uterus, |
| Function | catalytic activity:Ubiquitin C-terminal thioester + H(2)O = ubiquitin + a thiol.,similarity:Belongs to the peptidase C19 family.,similarity:Contains 1 DUSP domain.,similarity:Contains 3 EF-hand domains., |
| Background | catalytic activity:Ubiquitin C-terminal thioester + H(2)O = ubiquitin + a thiol.,similarity:Belongs to the peptidase C19 family.,similarity:Contains 1 DUSP domain.,similarity:Contains 3 EF-hand domains., |
| matters needing attention | Avoid repeated freezing and thawing! |

Usage suggestions

This product can be used in immunological reaction related experiments. For more information, please consult technical personnel.

Products Images

Immunohistochemistry analysis of paraffin-embedded human breast carcinoma tissue, using USP32 Antibody. The picture on the right is blocked with the synthesized peptide.