



# USP11 Polyclonal Antibody

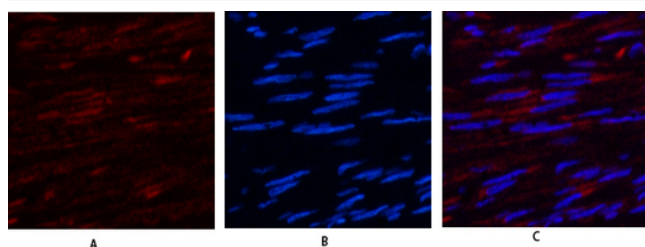
<b>Catalog No</b>	YP-Ab-02826
<b>Isotype</b>	IgG
<b>Reactivity</b>	Human;Mouse;Rat
<b>Applications</b>	IF;WB;ELISA
<b>Gene Name</b>	USP11
<b>Protein Name</b>	Ubiquitin carboxyl-terminal hydrolase 11
<b>Immunogen</b>	Synthesized peptide derived from the Internal region of human USP11.
<b>Specificity</b>	USP11 Polyclonal Antibody detects endogenous levels of USP11 protein.
<b>Formulation</b>	Liquid in PBS containing 50% glycerol, 0.5% BSA and 0.02% sodium azide.
<b>Source</b>	Polyclonal, Rabbit,IgG
<b>Purification</b>	The antibody was affinity-purified from rabbit antiserum by affinity-chromatography using epitope-specific immunogen.
<b>Dilution</b>	IF: 1:50-200 Western Blot: 1/500 - 1/2000. ELISA: 1/20000. Not yet tested in other applications.
<b>Concentration</b>	1 mg/ml
<b>Purity</b>	≥90%
<b>Storage Stability</b>	-20°C/1 year
<b>Synonyms</b>	USP11; UHX1; Ubiquitin carboxyl-terminal hydrolase 11; Deubiquitinating enzyme 11; Ubiquitin thioesterase 11; Ubiquitin-specific-processing protease 11
<b>Observed Band</b>	105kD
<b>Cell Pathway</b>	Nucleus . Cytoplasm . Chromosome . Predominantly nuclear (PubMed:12084015, PubMed:15314155). Associates with chromatin (PubMed:20601937, PubMed:20233726). .
<b>Tissue Specificity</b>	Brain,Fetal brain,Muscle,Retina,
<b>Function</b>	catalytic activity:Ubiquitin C-terminal thioester + H(2)O = ubiquitin + a thiol.,similarity:Belongs to the peptidase C19 family.,similarity:Contains 1 DUSP domain.,subunit:Interacts with RANBP9/RANBPM.,
<b>Background</b>	Protein ubiquitination controls many intracellular processes, including cell cycle progression, transcriptional activation, and signal transduction. This dynamic process, involving ubiquitin conjugating enzymes and deubiquitinating enzymes, adds and removes ubiquitin. Deubiquitinating enzymes are cysteine proteases that specifically cleave ubiquitin from ubiquitin-conjugated protein substrates. This gene encodes a deubiquitinating enzyme which lies in a gene cluster on chromosome Xp11.23 [provided by RefSeq, Jul 2008],
<b>matters needing attention</b>	Avoid repeated freezing and thawing!



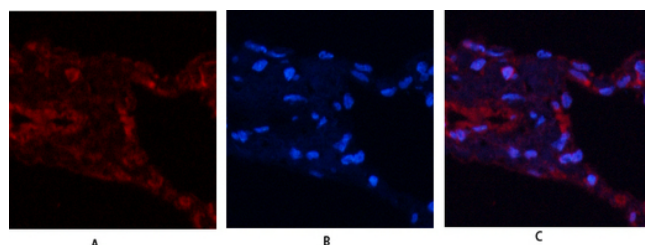
## Usage suggestions

This product can be used in immunological reaction related experiments. For more information, please consult technical personnel.

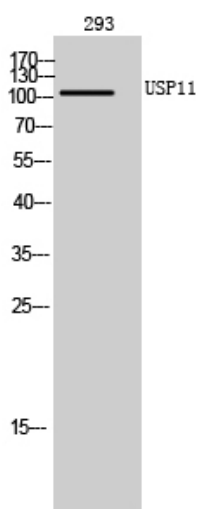
## Products Images



Immunofluorescence analysis of human-uterus tissue. 1, USP11 Polyclonal Antibody (red) was diluted at 1:200 (4° overnight). 2, Cy3 labeled Secondary antibody was diluted at 1:300 (room temperature, 50min). 3, Picture B: DAPI (blue) 10min. Picture A: Target. Picture B: DAPI. Picture C: merge of A+B



Immunofluorescence analysis of human-lung tissue. 1, USP11 Polyclonal Antibody (red) was diluted at 1:200 (4° overnight). 2, Cy3 labeled Secondary antibody was diluted at 1:300 (room temperature, 50min). 3, Picture B: DAPI (blue) 10min. Picture A: Target. Picture B: DAPI. Picture C: merge of A+B



Western Blot analysis of 293 cells using USP11 Polyclonal Antibody. Secondary antibody (catalog#: RS0002) was diluted at 1:20000. Cells nucleus extracted by Minute TM Cytoplasmic and Nuclear Fractionation kit (SC-003, Invent biotech, MN, USA).