



# UEV3 Polyclonal Antibody

<b>Catalog No</b>	YP-Ab-02823
<b>Isotype</b>	IgG
<b>Reactivity</b>	Human;Rat;Mouse;
<b>Applications</b>	WB;IHC;IF;ELISA
<b>Gene Name</b>	UEVLD
<b>Protein Name</b>	Ubiquitin-conjugating enzyme E2 variant 3
<b>Immunogen</b>	The antiserum was produced against synthesized peptide derived from human UEVLD. AA range:141-190
<b>Specificity</b>	UEV3 Polyclonal Antibody detects endogenous levels of UEV3 protein.
<b>Formulation</b>	Liquid in PBS containing 50% glycerol, 0.5% BSA and 0.02% sodium azide.
<b>Source</b>	Polyclonal, Rabbit,IgG
<b>Purification</b>	The antibody was affinity-purified from rabbit antiserum by affinity-chromatography using epitope-specific immunogen.
<b>Dilution</b>	WB: 1/500 - 1/2000. IHC: 1/100 - 1/300. ELISA: 1/40000.. IF 1:50-200
<b>Concentration</b>	1 mg/ml
<b>Purity</b>	≥90%
<b>Storage Stability</b>	-20°C/1 year
<b>Synonyms</b>	UEVLD; UEV3; Ubiquitin-conjugating enzyme E2 variant 3; UEV-3; EV and lactate/malate dehydrogenase domain-containing protein
<b>Observed Band</b>	52kD
<b>Cell Pathway</b>	extracellular exosome,
<b>Tissue Specificity</b>	Colon, colon carcinoma cell lines, normal cervical epithelium, carcinomas of the uterine cervix and peripheral blood leukocytes.
<b>Function</b>	function:Possible negative regulator of polyubiquitination.,similarity:Contains 1 UEV (ubiquitin E2 variant) domain.,similarity:In the C-terminal section; belongs to the LDH/MDH superfamily.,similarity:In the N-terminal section; belongs to the ubiquitin-conjugating enzyme family. UEV subfamily.,subunit:Homodimer.,tissue specificity:Colon, colon carcinoma cell lines, normal cervical epithelium, carcinomas of the uterine cervix and peripheral blood leukocytes.,
<b>Background</b>	function:Possible negative regulator of polyubiquitination.,similarity:Contains 1 UEV (ubiquitin E2 variant) domain.,similarity:In the C-terminal section; belongs to the LDH/MDH superfamily.,similarity:In the N-terminal section; belongs to the ubiquitin-conjugating enzyme family. UEV subfamily.,subunit:Homodimer.,tissue specificity:Colon, colon carcinoma cell lines, normal cervical epithelium, carcinomas of the uterine cervix and peripheral blood leukocytes.,



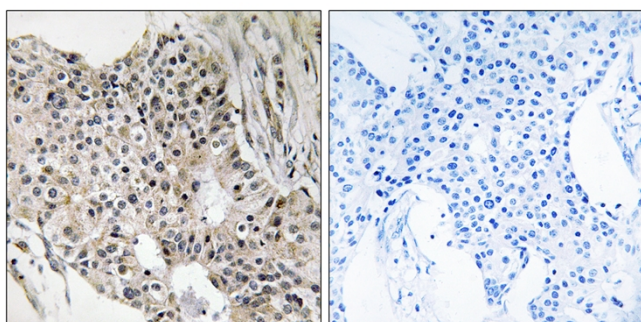
### matters needing attention

Avoid repeated freezing and thawing!

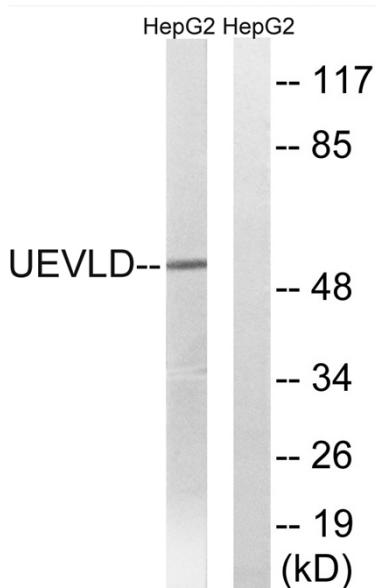
### Usage suggestions

This product can be used in immunological reaction related experiments. For more information, please consult technical personnel.

## Products Images



Immunohistochemistry analysis of paraffin-embedded human breast carcinoma tissue, using UEVLD Antibody. The picture on the right is blocked with the synthesized peptide.



Western blot analysis of lysates from HepG2 cells, using UEVLD Antibody. The lane on the right is blocked with the synthesized peptide.