

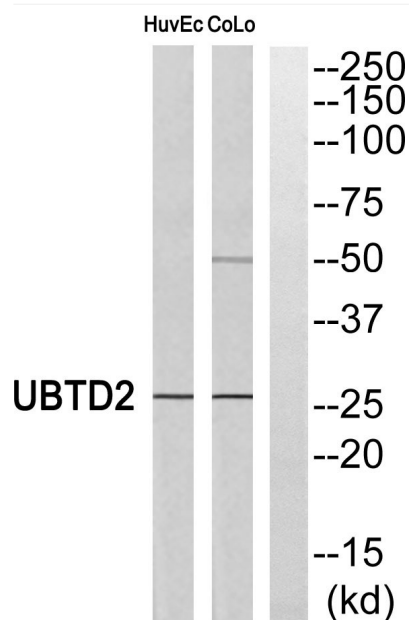


UBTD2 Polyclonal Antibody

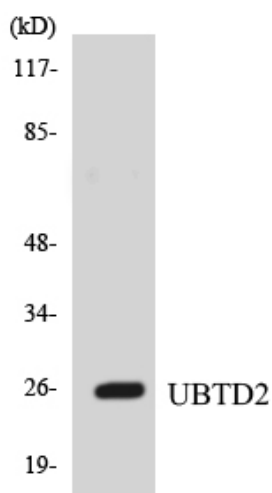
| | |
|----------------------------------|---|
| Catalog No | YP-Ab-02821 |
| Isotype | IgG |
| Reactivity | Human;Mouse |
| Applications | WB;ELISA |
| Gene Name | UBTD2 |
| Protein Name | Ubiquitin domain-containing protein 2 |
| Immunogen | The antiserum was produced against synthesized peptide derived from human UBTD2. AA range:181-230 |
| Specificity | UBTD2 Polyclonal Antibody detects endogenous levels of UBTD2 protein. |
| Formulation | Liquid in PBS containing 50% glycerol, 0.5% BSA and 0.02% sodium azide. |
| Source | Polyclonal, Rabbit,IgG |
| Purification | The antibody was affinity-purified from rabbit antiserum by affinity-chromatography using epitope-specific immunogen. |
| Dilution | Western Blot: 1/500 - 1/2000. ELISA: 1/40000. Not yet tested in other applications. |
| Concentration | 1 mg/ml |
| Purity | ≥90% |
| Storage Stability | -20°C/1 year |
| Synonyms | UBTD2; DCUBP; SB72; Ubiquitin domain-containing protein 2; Dendritic cell-derived ubiquitin-like protein; DC-UbP; Ubiquitin-like protein SB72 |
| Observed Band | 26kD |
| Cell Pathway | Cytoplasm . |
| Tissue Specificity | Detected in dendritic cells. Highly expressed in tumor cell lines, but not detectable in most tissues. |
| Function | similarity:Contains 1 ubiquitin-like domain.,tissue specificity:Detected in dendritic cells. Highly expressed in tumor cell lines, but not detectable in most tissues., |
| Background | similarity:Contains 1 ubiquitin-like domain.,tissue specificity:Detected in dendritic cells. Highly expressed in tumor cell lines, but not detectable in most tissues., |
| matters needing attention | Avoid repeated freezing and thawing! |
| Usage suggestions | This product can be used in immunological reaction related experiments. For more information, please consult technical personnel. |



Products Images



Western blot analysis of UBTD2 Antibody. The lane on the right is blocked with the UBTD2 peptide.



Western blot analysis of the lysates from HUVEC cells using UBTD2 antibody.