

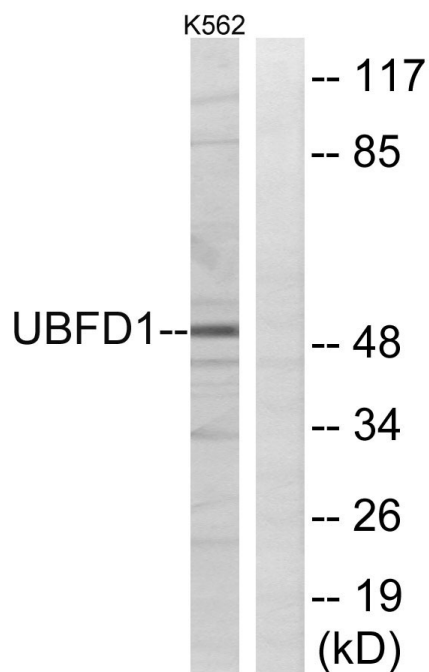


# UBPH Polyclonal Antibody

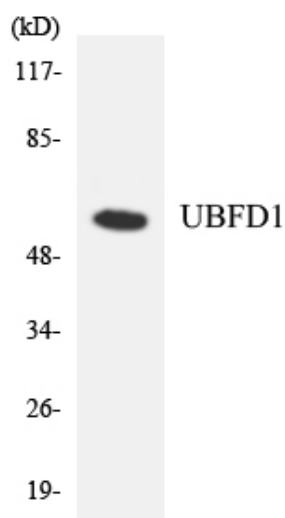
<b>Catalog No</b>	YP-Ab-02818
<b>Isotype</b>	IgG
<b>Reactivity</b>	Human;Mouse;Rat
<b>Applications</b>	WB;ELISA
<b>Gene Name</b>	UBFD1
<b>Protein Name</b>	Ubiquitin domain-containing protein UBFD1
<b>Immunogen</b>	The antiserum was produced against synthesized peptide derived from human UBFD1. AA range:135-184
<b>Specificity</b>	UBPH Polyclonal Antibody detects endogenous levels of UBPH protein.
<b>Formulation</b>	Liquid in PBS containing 50% glycerol, 0.5% BSA and 0.02% sodium azide.
<b>Source</b>	Polyclonal, Rabbit,IgG
<b>Purification</b>	The antibody was affinity-purified from rabbit antiserum by affinity-chromatography using epitope-specific immunogen.
<b>Dilution</b>	Western Blot: 1/500 - 1/2000. ELISA: 1/10000. Not yet tested in other applications.
<b>Concentration</b>	1 mg/ml
<b>Purity</b>	≥90%
<b>Storage Stability</b>	-20°C/1 year
<b>Synonyms</b>	UBFD1; UBPH; Ubiquitin domain-containing protein UBFD1; Ubiquitin-binding protein homolog
<b>Observed Band</b>	50kD
<b>Cell Pathway</b>	cell-cell adherens junction,
<b>Tissue Specificity</b>	Skeletal muscle,
<b>Function</b>	
<b>Background</b>	UBFD1 (Ubiquitin Family Domain Containing 1) is a Protein Coding gene. GO annotations related to this gene include poly (A) RNA binding.
<b>matters needing attention</b>	Avoid repeated freezing and thawing!
<b>Usage suggestions</b>	This product can be used in immunological reaction related experiments. For more information, please consult technical personnel.



## Products Images



Western blot analysis of lysates from K562 cells, using UBFD1 Antibody. The lane on the right is blocked with the synthesized peptide.



Western blot analysis of the lysates from COLO205 cells using UBFD1 antibody.