

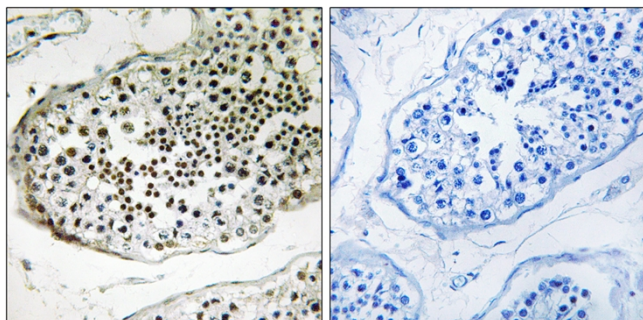


# Ubiquilin-3 Polyclonal Antibody

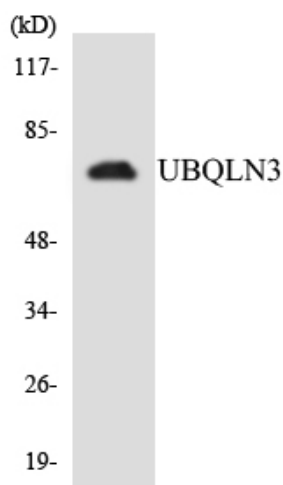
<b>Catalog No</b>	YP-Ab-02817
<b>Isotype</b>	IgG
<b>Reactivity</b>	Human;Mouse;Rat
<b>Applications</b>	WB;IHC;IF;ELISA
<b>Gene Name</b>	UBQLN3
<b>Protein Name</b>	Ubiquilin-3
<b>Immunogen</b>	The antiserum was produced against synthesized peptide derived from human UBQLN3. AA range:271-320
<b>Specificity</b>	Ubiquilin-3 Polyclonal Antibody detects endogenous levels of Ubiquilin-3 protein.
<b>Formulation</b>	Liquid in PBS containing 50% glycerol, 0.5% BSA and 0.02% sodium azide.
<b>Source</b>	Polyclonal, Rabbit,IgG
<b>Purification</b>	The antibody was affinity-purified from rabbit antiserum by affinity-chromatography using epitope-specific immunogen.
<b>Dilution</b>	WB: 1/500 - 1/2000. IHC: 1/100 - 1/300. ELISA: 1/40000.. IF 1:50-200
<b>Concentration</b>	1 mg/ml
<b>Purity</b>	≥90%
<b>Storage Stability</b>	-20°C/1 year
<b>Synonyms</b>	UBQLN3; Ubiquilin-3
<b>Observed Band</b>	70kD
<b>Cell Pathway</b>	
<b>Tissue Specificity</b>	Testis specific.
<b>Function</b>	similarity:Contains 1 UBA domain.,similarity:Contains 1 ubiquitin-like domain.,tissue specificity:Testis specific.,
<b>Background</b>	Summary: This gene encodes an ubiquitin-like protein (ubiquilin) that shares high degree of similarity with related products in yeast, rat and frog. Ubiquilins contain a N-terminal ubiquitin-like domain and a C-terminal ubiquitin-associated domain. They physically associate with both proteasomes and ubiquitin ligases, and thus thought to functionally link the ubiquitination machinery to the proteasome to affect in vivo protein degradation. This gene is specifically expressed in the testis, and proposed to regulate cell-cycle progression during spermatogenesis. [provided by RefSeq, Jul 2008],
<b>matters needing attention</b>	Avoid repeated freezing and thawing!

**Usage suggestions**

This product can be used in immunological reaction related experiments. For more information, please consult technical personnel.

**Products Images**

Immunohistochemistry analysis of paraffin-embedded human testis tissue, using UBQLN3 Antibody. The picture on the right is blocked with the synthesized peptide.



Western blot analysis of the lysates from Jurkat cells using UBQLN3 antibody.