



TUTase Polyclonal Antibody

Catalog No	YP-Ab-02806
Isotype	IgG
Reactivity	Human;Rat;Mouse;
Applications	WB;IHC;IF;ELISA
Gene Name	TUT1
Protein Name	Speckle targeted PIP5K1A-regulated poly(A) polymerase
Immunogen	The antiserum was produced against synthesized peptide derived from human TUT1. AA range:291-340
Specificity	TUTase Polyclonal Antibody detects endogenous levels of TUTase protein.
Formulation	Liquid in PBS containing 50% glycerol, 0.5% BSA and 0.02% sodium azide.
Source	Polyclonal, Rabbit,IgG
Purification	The antibody was affinity-purified from rabbit antiserum by affinity-chromatography using epitope-specific immunogen.
Dilution	WB: 1/500 - 1/2000. IHC: 1/100 - 1/300. ELISA: 1/20000.. IF 1:50-200
Concentration	1 mg/ml
Purity	≥90%
Storage Stability	-20°C/1 year
Synonyms	TUT1; RBM21; Speckle targeted PIP5K1A-regulated poly(A) polymerase; Star-PAP; RNA-binding motif protein 21; RNA-binding protein 21; U6 snRNA-specific terminal uridylyltransferase 1; U6-TUTase
Observed Band	95kD
Cell Pathway	Nucleus, nucleolus . Nucleus speckle .
Tissue Specificity	Widely expressed.
Function	catalytic activity:UTP + RNA(n) = diphosphate + RNA(n+1)..,function:Highly specific terminal uridylyltransferase that exclusively accepts U6 snRNA as substrate. U6 snRNA is unique in that nucleotides are both added to and removed from its 3'-end. U6-TUTase is responsible for a controlled elongation reaction that results in the restoration of the four 3'-terminal UMP-residues found in newly transcribed U6 snRNA..PTM:Phosphorylated upon DNA damage, probably by ATM or ATR..similarity:Contains 1 RRM (RNA recognition motif) domain.,
Background	This gene encodes a nucleotidyl transferase that functions as both a terminal uridylyltransferase and a nuclear poly(A) polymerase. The encoded enzyme specifically adds and removes nucleotides from the 3' end of small nuclear RNAs and select mRNAs and may function in controlling gene expression and cell proliferation.[provided by RefSeq, Apr 2009],

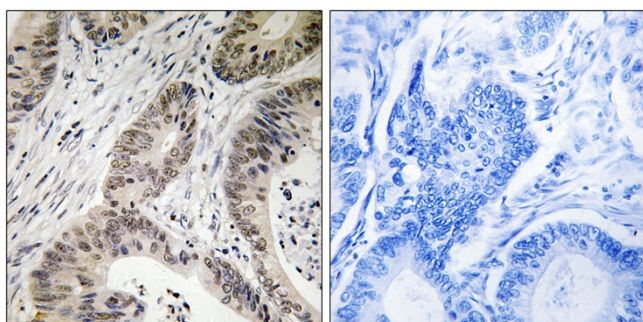
**matters needing attention**

Avoid repeated freezing and thawing!

Usage suggestions

This product can be used in immunological reaction related experiments. For more information, please consult technical personnel.

Products Images



Immunohistochemistry analysis of paraffin-embedded human colon carcinoma, using TUT1 Antibody. The picture on the right is blocked with the synthesized peptide.