



# TRP2 Polyclonal Antibody

|                           |   |
|---------------------------|---|
| <b>Catalog No</b>         | YP-Ab-02804   |
| <b>Isotype</b>            | IgG   |
| <b>Reactivity</b>         | Human;Mouse   |
| <b>Applications</b>       | WB;IHC;IF;ELISA   |
| <b>Gene Name</b>          | DCT   |
| <b>Protein Name</b>       | L-dopachrome tautomerase  |
| <b>Immunogen</b>          | The antiserum was produced against synthesized peptide derived from human DCT. AA range:51-100  |
| <b>Specificity</b>        | TRP2 Polyclonal Antibody detects endogenous levels of TRP2 protein.   |
| <b>Formulation</b>        | Liquid in PBS containing 50% glycerol, 0.5% BSA and 0.02% sodium azide.   |
| <b>Source</b>             | Polyclonal, Rabbit,IgG  |
| <b>Purification</b>       | The antibody was affinity-purified from rabbit antiserum by affinity-chromatography using epitope-specific immunogen.   |
| <b>Dilution</b>           | Western Blot: 1/500 - 1/2000. Immunofluorescence: 1/200 - 1/1000. ELISA: 1/40000. Not yet tested in other applications.   |
| <b>Concentration</b>      | 1 mg/ml   |
| <b>Purity</b>             | ≥90%  |
| <b>Storage Stability</b>  | -20°C/1 year  |
| <b>Synonyms</b>           | DCT; TYRP2; L-dopachrome tautomerase; DCT; DT; L-dopachrome Delta-isomerase; Tyrosinase-related protein 2; TRP-2; TRP2  |
| <b>Observed Band</b>      | 60kD  |
| <b>Cell Pathway</b>       | Melanosome membrane ; Single-pass type I membrane protein . Melanosome . Proper trafficking to melanosome is regulated by SGSM2, ANKRD27, RAB9A, RAB32 and RAB38. .   |
| <b>Tissue Specificity</b> | Liver,Lymphnode melanoma metastases,Mammary gland,Melanoma,   |
| <b>Function</b>           | catalytic activity:L-dopachrome = 5,6-dihydroxyindole-2-carboxylate.,cofactor: Binds 2 zinc ions per subunit.,function:Involved in regulating eumelanin and pheomelanin levels.,pathway:Pigment biosynthesis; melanin biosynthesis.,similarity:Belongs to the tyrosinase family.,subunit:Tyrosinase, TYRP1 and TYRP2 may form a multienzyme complex., |
| <b>Background</b>         | catalytic activity:L-dopachrome = 5,6-dihydroxyindole-2-carboxylate.,cofactor: Binds 2 zinc ions per subunit.,function:Involved in regulating eumelanin and pheomelanin levels.,pathway:Pigment biosynthesis; melanin biosynthesis.,similarity:Belongs to the tyrosinase family.,subunit:Tyrosinase, TYRP1 and TYRP2 may form a multienzyme complex., |



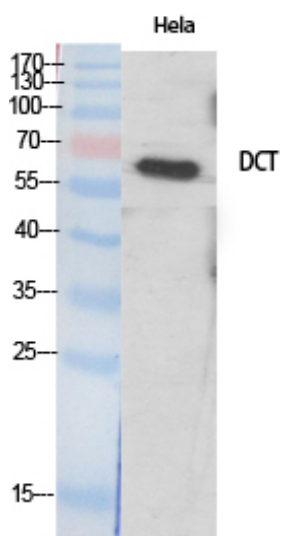
### matters needing attention

Avoid repeated freezing and thawing!

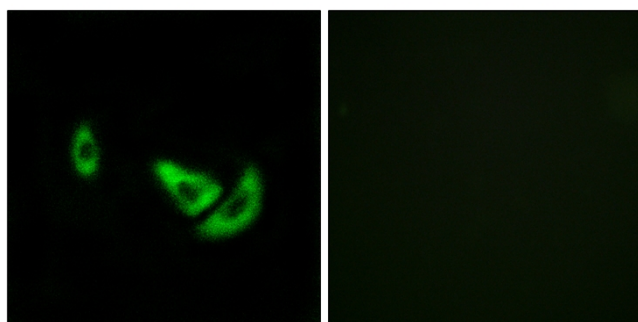
### Usage suggestions

This product can be used in immunological reaction related experiments. For more information, please consult technical personnel.

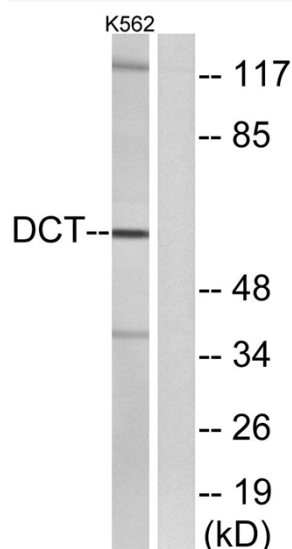
## Products Images



Western Blot analysis of various cells using TRP2 Polyclonal Antibody diluted at 1:500. Secondary antibody(catalog#:RS0002) was diluted at 1:20000



Immunofluorescence analysis of A549 cells, using DCT Antibody. The picture on the right is blocked with the synthesized peptide.



Western blot analysis of lysates from K562 cells, using DCT Antibody. The lane on the right is blocked with the synthesized peptide.