

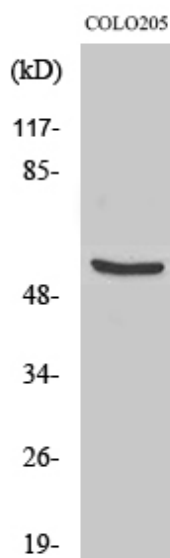


TH Polyclonal Antibody

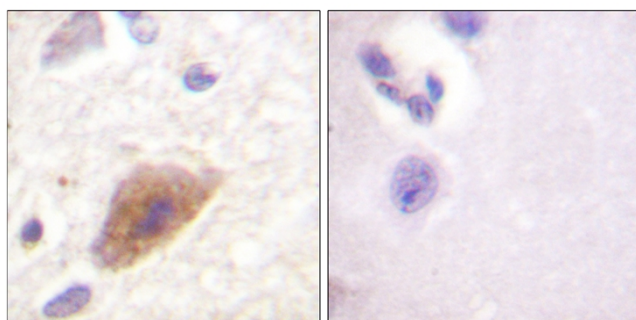
Catalog No	YP-Ab-02794
Isotype	IgG
Reactivity	Rat
Applications	WB;IHC;IF;ELISA
Gene Name	TH
Protein Name	Tyrosine 3-monooxygenase
Immunogen	The antiserum was produced against synthesized peptide derived from human Tyrosine Hydroxylase. AA range:5-54
Specificity	TH Polyclonal Antibody detects endogenous levels of TH protein.
Formulation	Liquid in PBS containing 50% glycerol, 0.5% BSA and 0.02% sodium azide.
Source	Polyclonal, Rabbit,IgG
Purification	The antibody was affinity-purified from rabbit antiserum by affinity-chromatography using epitope-specific immunogen.
Dilution	WB: 1/500 - 1/2000.IHC-p:1:50-300 ELISA: 1/20000.. IF 1:50-200
Concentration	1 mg/ml
Purity	≥90%
Storage Stability	-20°C/1 year
Synonyms	TH; TYH; Tyrosine 3-monooxygenase; Tyrosine 3-hydroxylase; TH
Observed Band	58kD
Cell Pathway	
Tissue Specificity	
Function	
Background	Tyrosine 3-monooxygenase encoded by TH is involved in the conversion of tyrosine to dopamine. It is the rate-limiting enzyme in the synthesis of catecholamines, hence plays a key role in the physiology of adrenergic neurons. Mutations in this gene have be associated with autosomal recessive Segawa syndrome. Alternatively spliced transcript variants encoding different isoforms have been noted for this gene.
matters needing attention	Avoid repeated freezing and thawing!
Usage suggestions	This product can be used in immunological reaction related experiments. For more information, please consult technical personnel.



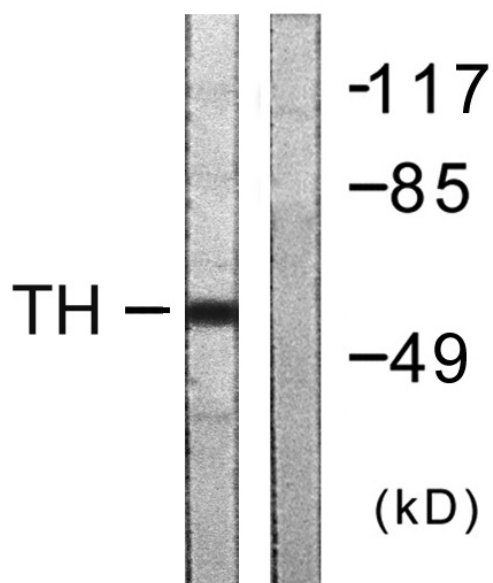
Products Images



Western Blot analysis of various cells using TH Polyclonal Antibody



Immunohistochemistry analysis of paraffin-embedded human brain tissue, using Tyrosine Hydroxylase Antibody. The picture on the right is blocked with the synthesized peptide.



Western blot analysis of lysates from COLO205 cells, using Tyrosine Hydroxylase Antibody. The lane on the right is blocked with the synthesized peptide.